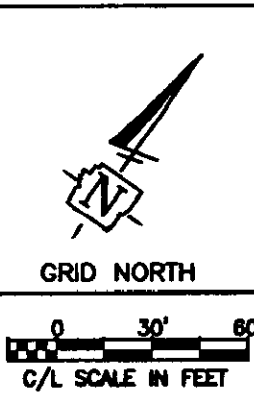


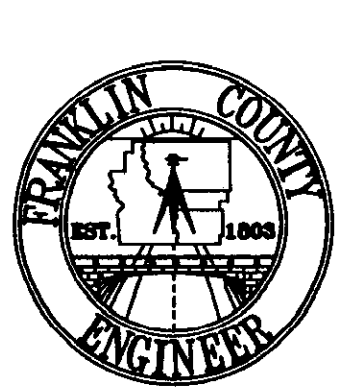
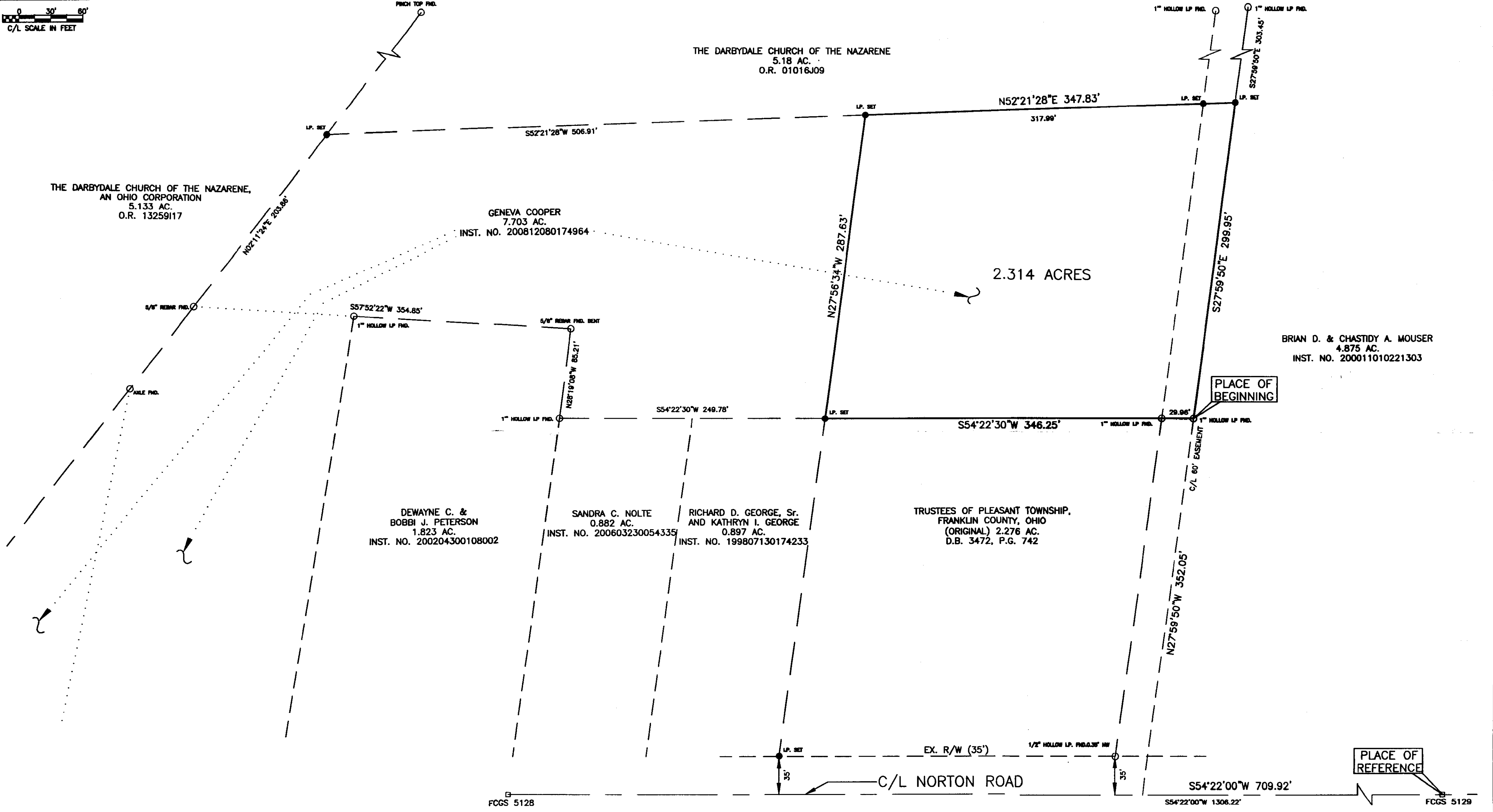
SURVEY OF A 2.314 ACRE TRACT FOR PLEASANT TOWNSHIP TRUSTEES

VIRGINIA MILITARY SURVEY NO.'S 6309 AND 6582

TOWNSHIP OF PLEASANT,
FRANKLIN COUNTY, OHIO



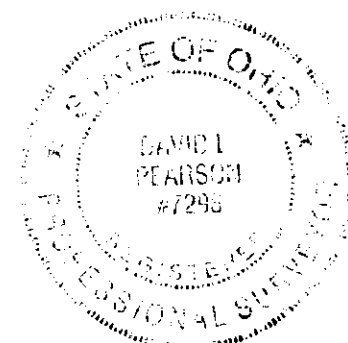
GRID NORTH
C/L SCALE IN FEET



BASIS OF BEARINGS:

BEARINGS SHOWN HEREIN ARE BASED ON THE BEARING (N 54°22'00" E) AS SHOWN ALONG THE CENTERLINE OF NORTON ROAD, AS SHOWN IN THE PLANS FOR THE STATE OF OHIO, FRA-CR.3, ON RECORD IN THE FRANKLIN COUNTY ENGINEERS OFFICE.

NOTES:
I.P.'S SET ARE 5/8" REBAR WITH YELLOW PLASTIC CAPS STAMPED "FRANKLIN COUNTY ENGINEER"



THIS PLAT WAS PREPARED FROM AN ACTUAL FIELD SURVEY PERFORMED BY THE FRANKLIN COUNTY ENGINEER'S OFFICE, ALONG WITH PUBLIC RECORDS ON FILE IN THE FRANKLIN COUNTY RECORDER'S OFFICE AND THE FRANKLIN COUNTY ENGINEER'S OFFICE

David L. Pearson
DAVID L. PEARSON
OHIO REGISTERED SURVEYOR NO.7298

11/23/2010
DATE

DATE: 11-22-2010	DRAWING: 230-000843-1	
	DRAWN BY: FAR	
REVISIONS		
DATE	DESCRIPTION	BY