

H-2-A



Evans, Mechwart, Hambleton & Tilton, Inc.
Engineers • Surveyors • Planners • Scientists
5500 New Albany Road, Columbus, OH 43054
Phone: 614.775.4500 Toll Free: 888.775.3648
emht.com

RIGHT-OF-WAY AQUISITION

SURVEY NUMBER 8231

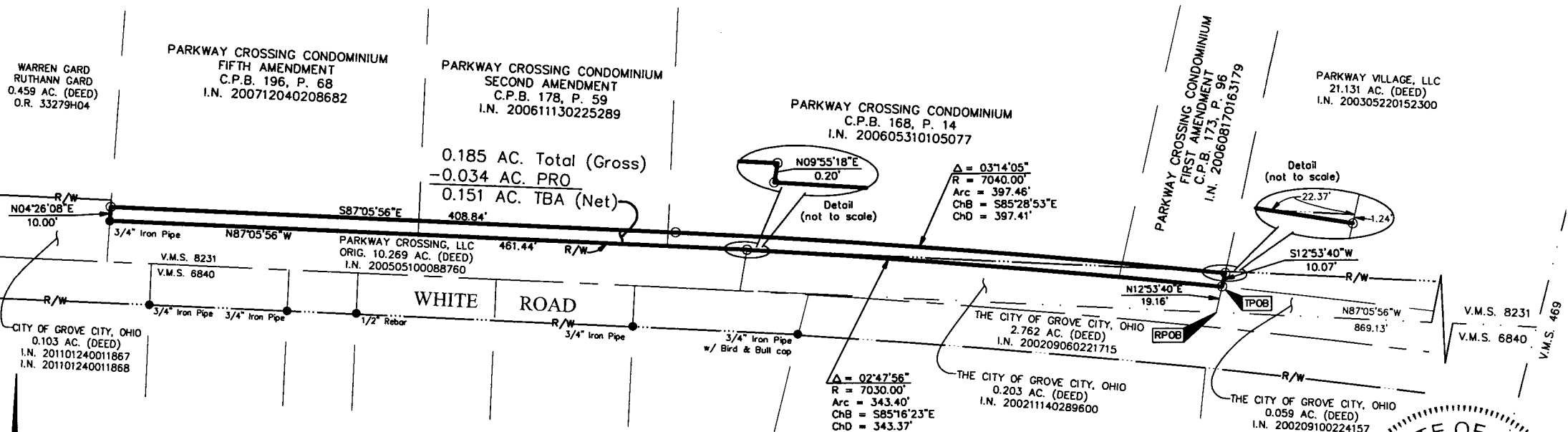
VIRGINIA MILITARY DISTRICT

CITY OF GROVE CITY, COUNTY OF FRANKLIN, STATE OF OHIO

Date: February 3, 2011

Scale: 1" = 60'

Job No. 2011-0012

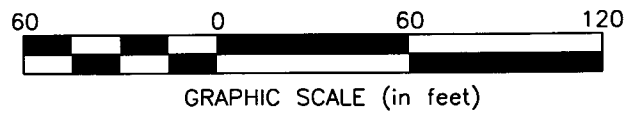


SURVEY NOTE:
This survey was prepared using documents of record, prior plats of survey, and observed evidence located by an actual field survey.

NOTE:
Occupation, in general, is as shown.

BASIS OF BEARINGS: The Bearings shown hereon are based on the Ohio State Plane Coordinate System, South Zone per NAD83 (1986 Adjustment). Control for bearings was from coordinates of monuments FCGS 6633 and FCGS 0025. The portion of the centerline of White Road between monuments FCGS 6605 and FCGS 6606, having a bearing of South 85° 28' 28" East, is designated the "Basis of Bearings" for this survey.

- = MON. FND.
 - = I.P. FND.
 - = I.P. SET
 - = MAG. NAIL SET
- I.P. Set are 13/16" I.D. iron pipe with cap inscribed EMHT INC



By _____
Edward J. Miller
Professional Surveyor No. 8250

Date _____

J:\20110012\201100125V\DWG\20110012BNDY02_WHITE_RD.DWG plotted by GEIGER, STEVEN on 2/8/2011 11:00:52 AM last saved by SGEIGER on 2/8/2011 11:00:07 AM
Xrefs: ACAD-00336-CS-REFR-N.DWG