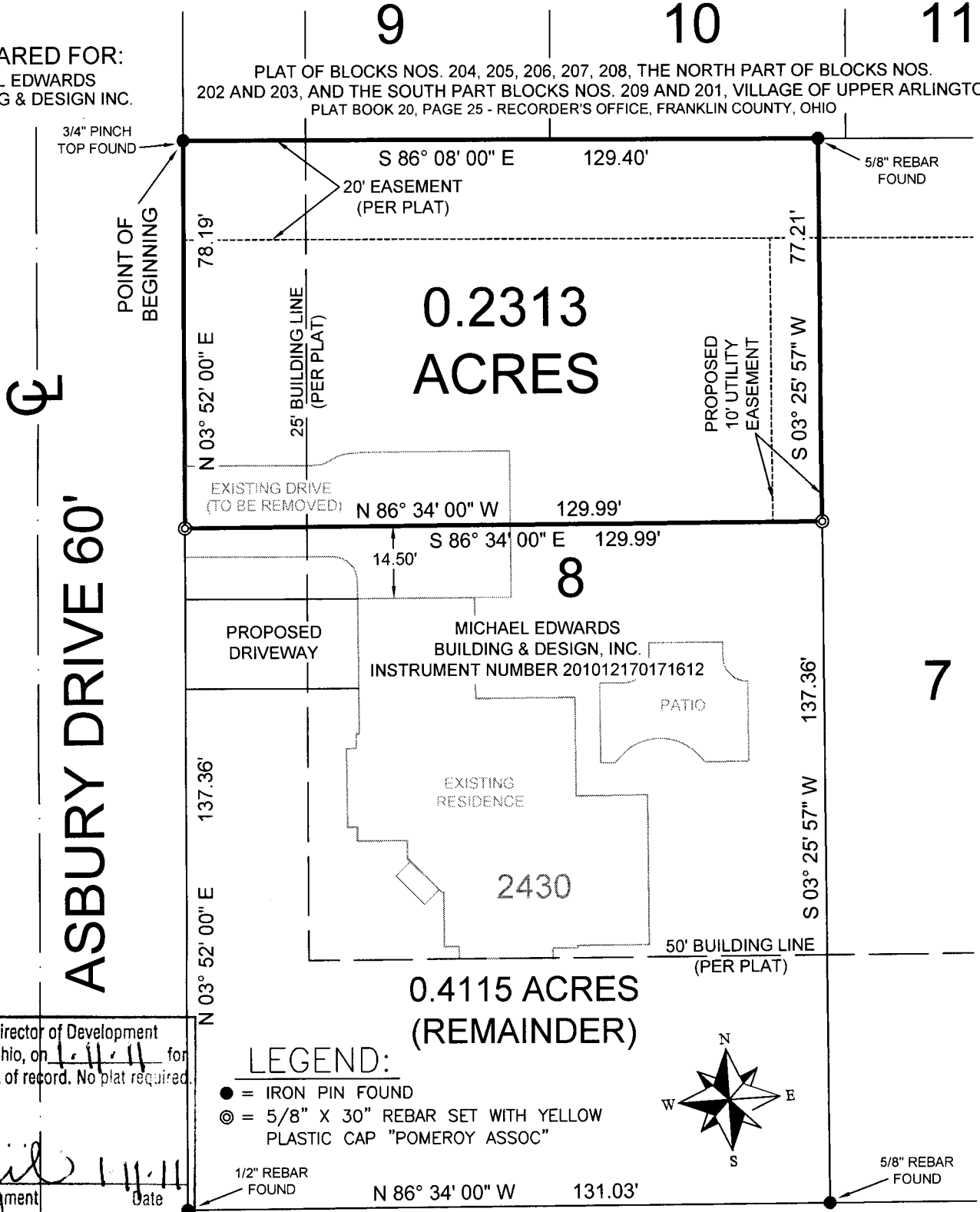


PLAT OF SURVEY

0.2313 ACRES - PART OF LOT 8, BLOCK 203
PLAT OF BLOCK NO 201 & THE SOUTH PART OF BLOCKS
NOS. 202 AND 203, VILLAGE OF UPPER ARLINGTON
PLAT BOOK 20, PAGE 26 - RECORDER'S OFFICE, FRANKLIN COUNTY, OHIO
CITY OF UPPER ARLINGTON, FRANKLIN COUNTY, OHIO

PREPARED FOR:
MICHAEL EDWARDS
BUILDING & DESIGN INC.

PLAT OF BLOCKS NOS. 204, 205, 206, 207, 208, THE NORTH PART OF BLOCKS NOS.
202 AND 203, AND THE SOUTH PART BLOCKS NOS. 209 AND 201, VILLAGE OF UPPER ARLINGTON
PLAT BOOK 20, PAGE 25 - RECORDER'S OFFICE, FRANKLIN COUNTY, OHIO



ASBURY DRIVE 60'

ONANDAGA DRIVE 60'

0.2313
ACRES

0.4115 ACRES
(REMAINDER)

8

7

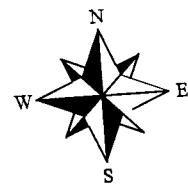
Approved by the Director of Development
Upper Arlington, Ohio, on 1-11-11 for
attachment to a lot of record. No plat required.

[Signature]
Director of Development

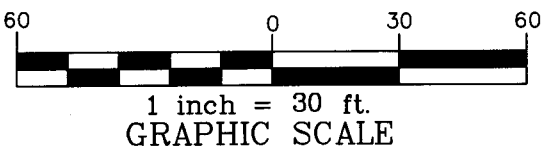
1-11-11
Date

LEGEND:

- = IRON PIN FOUND
- ⊙ = 5/8" X 30" REBAR SET WITH YELLOW PLASTIC CAP "POMEROY ASSOC"
- = 1/2" REBAR FOUND



Bearings are based on the northerly right of - way line of Onandaga Drive being N 86° 34' 00" W as shown on the Plat of Block No 201 & the South Part of Blocks Nos 202 and 203, Village of Upper Arlington, of record in Plat Book 20, Page 26, Recorder's Office, Franklin County, Ohio.

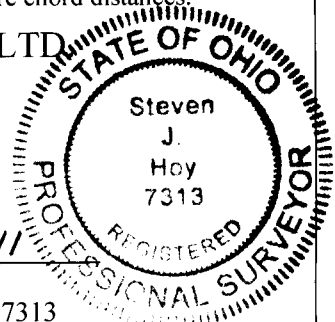


We hereby certify that the above plat was prepared from an actual field survey of the premises and to the best of our knowledge and belief is correct. All dimensions along arcs are chord distances.

POMEROY & ASSOCIATES, LTD.

Pomeroy & Associates
Ltd.

Consulting Engineers & Surveyors
599 Scherers Court • Worthington, Ohio 43085
Phone (614) 885-2498 • Fax (614) 885-2886



By *[Signature]* 1-6-11
Steven J. Hoy
Registered Professional Surveyor No. 7313

Order No. 1845-2010 S