

# RECEIVED

JAN 05 2011

Franklin County Engineer  
Dean C. Ringle, P.E., P.S.

I-5-E



Evans, Mechwart, Hambleton & Tilton, Inc.  
Engineers • Surveyors • Planners • Scientists  
5500 New Albany Road, Columbus, OH 43054  
Phone: 614.775.4500 Toll Free: 888.775.3648  
emht.com

## SURVEY OF ACREAGE PARCEL

SECTION 15, QUARTER TOWNSHIP 2, TOWNSHIP 2, RANGE 16  
UNITED STATES MILITARY LANDS  
CITY OF COLUMBUS, COUNTY OF FRANKLIN, STATE OF OHIO

Date: January 3, 2011

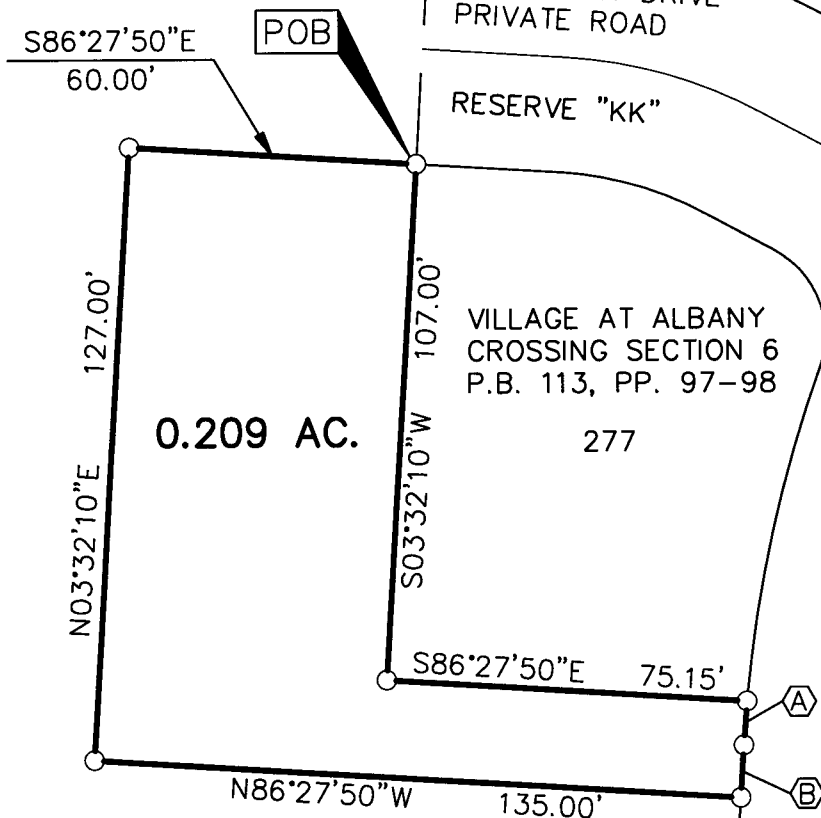
Job No. 2008-0644

Scale: 1" = 40'

**BASIS OF BEARINGS:** The bearings shown hereon are based on the same meridian as the bearings shown on the subdivision plat entitled "Village at Albany Crossing Section 1 Part 1," of record in Plat Book 106, Pages 61, 62, 63 and 64, Recorder's Office, Franklin County, Ohio. On said plat of record a portion of the centerline of Caledonia Drive has a bearing of North 03° 32' 10" East.

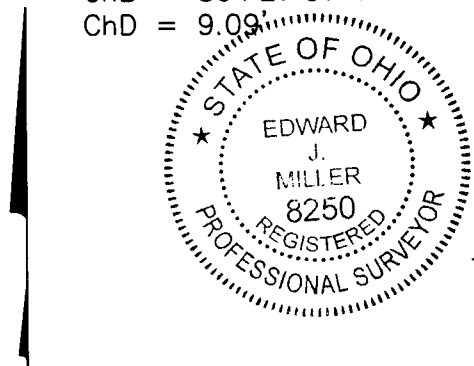
**SOURCE OF DATA:** The sources of recorded survey data referenced in the plan and text of this plat, are the records of the Recorder's Office, Franklin County, Ohio.

DOMINION HOMES, INC.  
ORIG. 60.492 AC. (DEED)  
I.N. 200311040353156



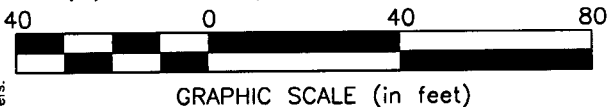
(A)  $\Delta = 01^{\circ}51'34''$   
 $R = 280.22'$   
 $Arc = 9.09'$   
 $ChB = S04^{\circ}27'57''W$   
 $ChD = 9.09'$

(B)  $\frac{S03^{\circ}32'10''W}{10.91'}$



○ = I.P. SET  
I.P. Set are 13/16" I.D. iron pipe with cap inscribed EMHT INC

By \_\_\_\_\_ Date \_\_\_\_\_  
Edward J. Miller  
Professional Surveyor No. 8250



I:\20080644\20080644.SV\DWG\20080644BNDY01.DWG plotted by GEIGER, STEVEN on 1/4/2011 3:35:06 PM last saved by SGEIGER on 1/4/2011 3:34:49 PM