

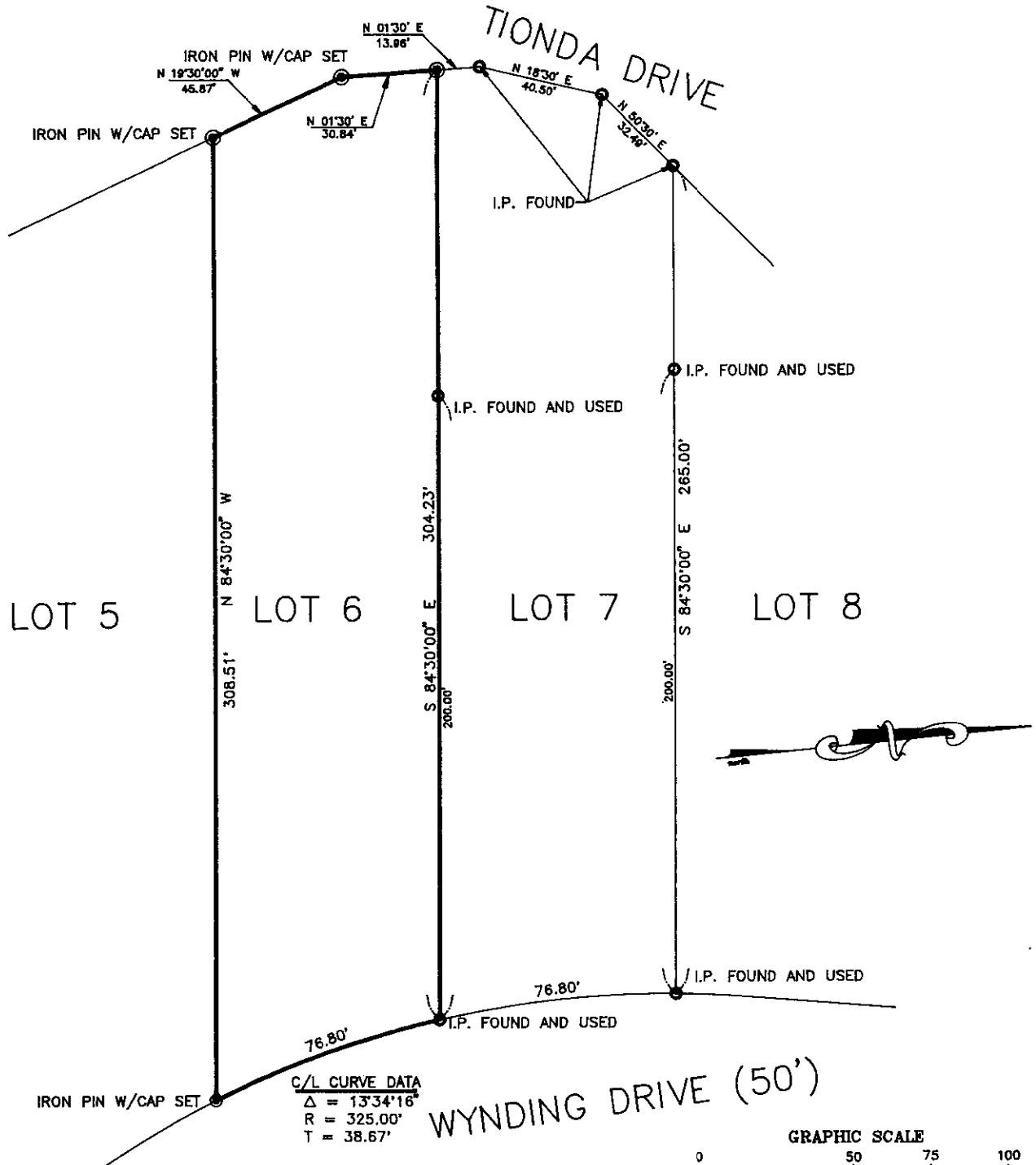
PLAT OF SURVEY

LOT 6

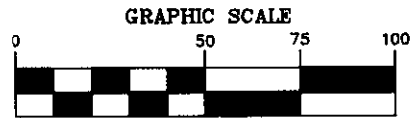
AMENDED PLAT OF FORT RESERVE

P.B. 24, PAGE 4

CITY OF COLUMBUS
FRANKLIN COUNTY, OHIO



THIS PLAT WAS PREPARED BY HARRY L. GREENE, ENGINEERING AND SURVEYING, AND IS A TRUE AND ACCURATE REPRESENTATION, TO THE BEST OF MY KNOWLEDGE AND BELIEF, OF A SURVEY MADE BY SAME IN NOVEMBER 1994.



1 inch = 50 ft.

William Edward Chaffin
WILLIAM EDWARD CHAFFIN
REG. SURVEYOR NO. 7559

DRAWN BY: R. CHAFFIN	DATE: 12-01-94	— PLAN PREPARED BY —	
CHECKED BY: W. CHAFFIN	DRAWING NO.:	HARRY L. GREENE, ENGINEERING AND SURVEYING	
JOB NO.: 138-11-94	SHEET 1 OF 1		2122 TREMONT CENTER COLUMBUS, OHIO 43221 (614) 486-0714