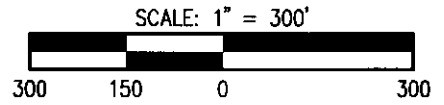


**50 FOOT RIGHT-OF-WAY TAKE
FOR
THE CITY OF COLUMBUS**
2.042 ACRE TRACT, OUT OF A 13.638 ACRE TRACT
DEEDED TO O'KEEFE DEVELOPMENT, LLC
INSTRUMENT 200208020190119
CITY OF COLUMBUS
COUNTY OF FRANKLIN
STATE OF OHIO



Basis of bearings is on the State Plane coordinates system, Ohio South Zone, using Franklin County Engineers control monuments FRANK 152 and FRANK 52, with a bearing of North 59 degrees 35 minutes 20 seconds West, between them.

FRANKLIN COUNTY MONUMENT 152
STATE PLANE COORDINATES
NORTHING: 727084.0807
EASTING: 1804441.9025
ELEVATION: 800.97' (NAD88)

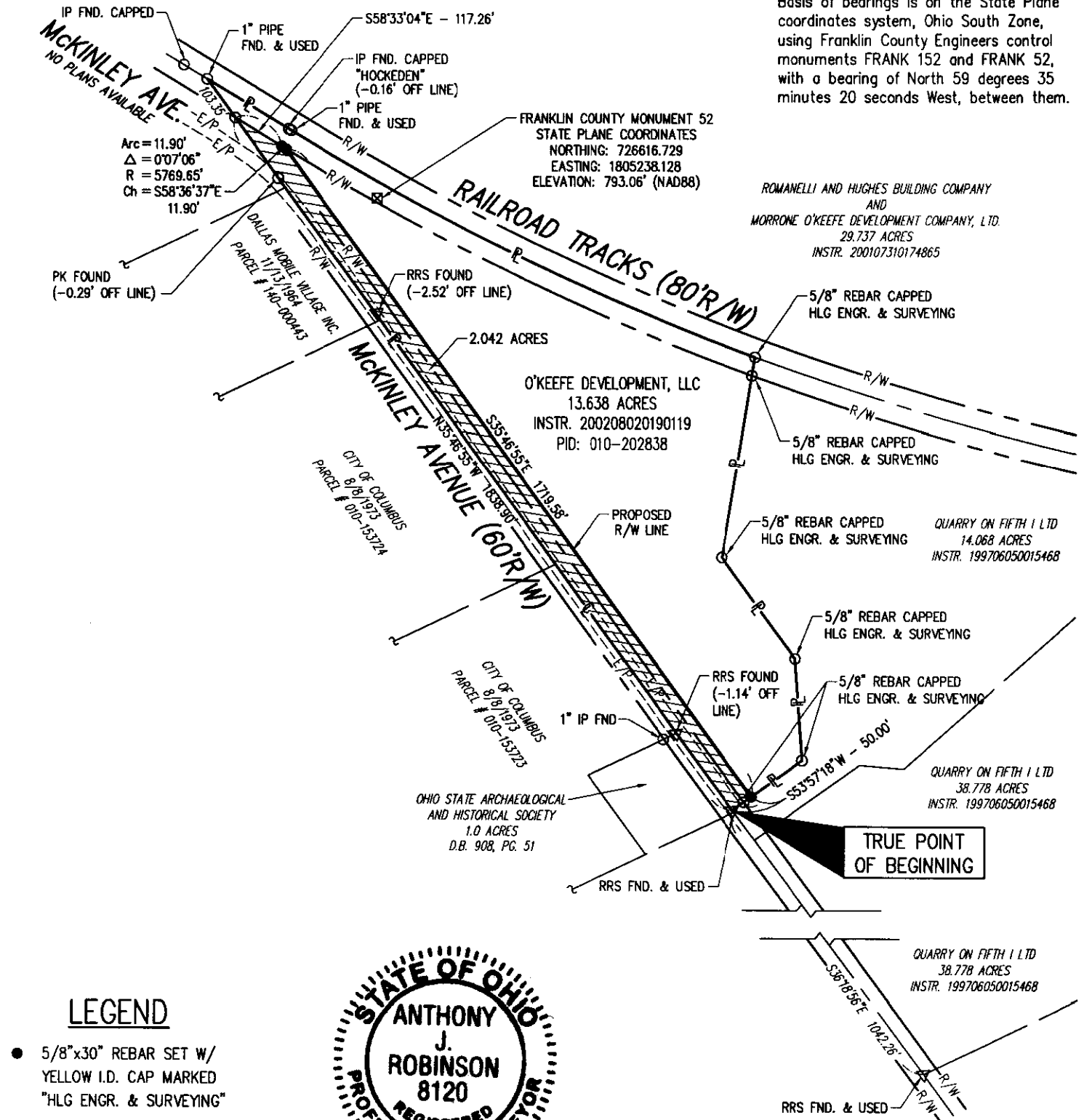
FRANKLIN COUNTY MONUMENT 52
STATE PLANE COORDINATES
NORTHING: 726616.729
EASTING: 1805238.128
ELEVATION: 793.06' (NAD88)

ROMANELLI AND HUGHES BUILDING COMPANY
AND
MORRONE O'KEEFE DEVELOPMENT COMPANY, LTD.
29.737 ACRES
INSTR. 200107310174865

QUARRY ON FIFTH I LTD
14.068 ACRES
INSTR. 199706050015468

QUARRY ON FIFTH I LTD
38.778 ACRES
INSTR. 199706050015468

QUARRY ON FIFTH I LTD
38.778 ACRES
INSTR. 199706050015468



LEGEND

- 5/8"x30" REBAR SET W/
YELLOW I.D. CAP MARKED
"HLG ENGR. & SURVEYING"
- ⊠ MONUMENT FOUND
- FOUND, AS LABELED
- △ RAILROAD SPIKE FOUND



THIS PLAT WAS PREPARED BY HLG ENGINEERING AND SURVEYING, INC., AND IS A TRUE AND ACCURATE REPRESENTATION, TO THE BEST OF MY KNOWLEDGE AND BELIEF, OF A SURVEY MADE BY SAME IN SEPTEMBER 2001, NOVEMBER 2001 AND JANUARY 2003.

January 29, 2003

SHEET

1

OF 1

— PLAN PREPARED BY —

HLG, ENGINEERING AND SURVEYING, INC.

705-M LAKEVIEW PLAZA BLVD.
WORTHINGTON, OH 43085
(614) 841-0053 (PHONE)
(614) 841-0170 (FAX)



JOB NO.
31043.001

ANTHONY J. ROBINSON, P.S. No. 8120

DATE

Anthony J. Robinson 1-31-03