



Evans, Mechwart, Hambleton & Tilton, Inc.  
Engineers • Surveyors • Planners • Scientists  
5500 New Albany Road, Columbus, OH 43054  
Phone: 614.775.4500 Toll Free: 888.775.3648  
emht.com

# SURVEY OF ACREAGE PARCEL

SECTION 15, QUARTER TOWNSHIP 2, TOWNSHIP 2, RANGE 16  
UNITED STATES MILITARY LANDS  
CITY OF COLUMBUS, COUNTY OF FRANKLIN, STATE OF OHIO

Date: November 3, 2010

Scale: 1" = 40'

Job No: 2010-1408

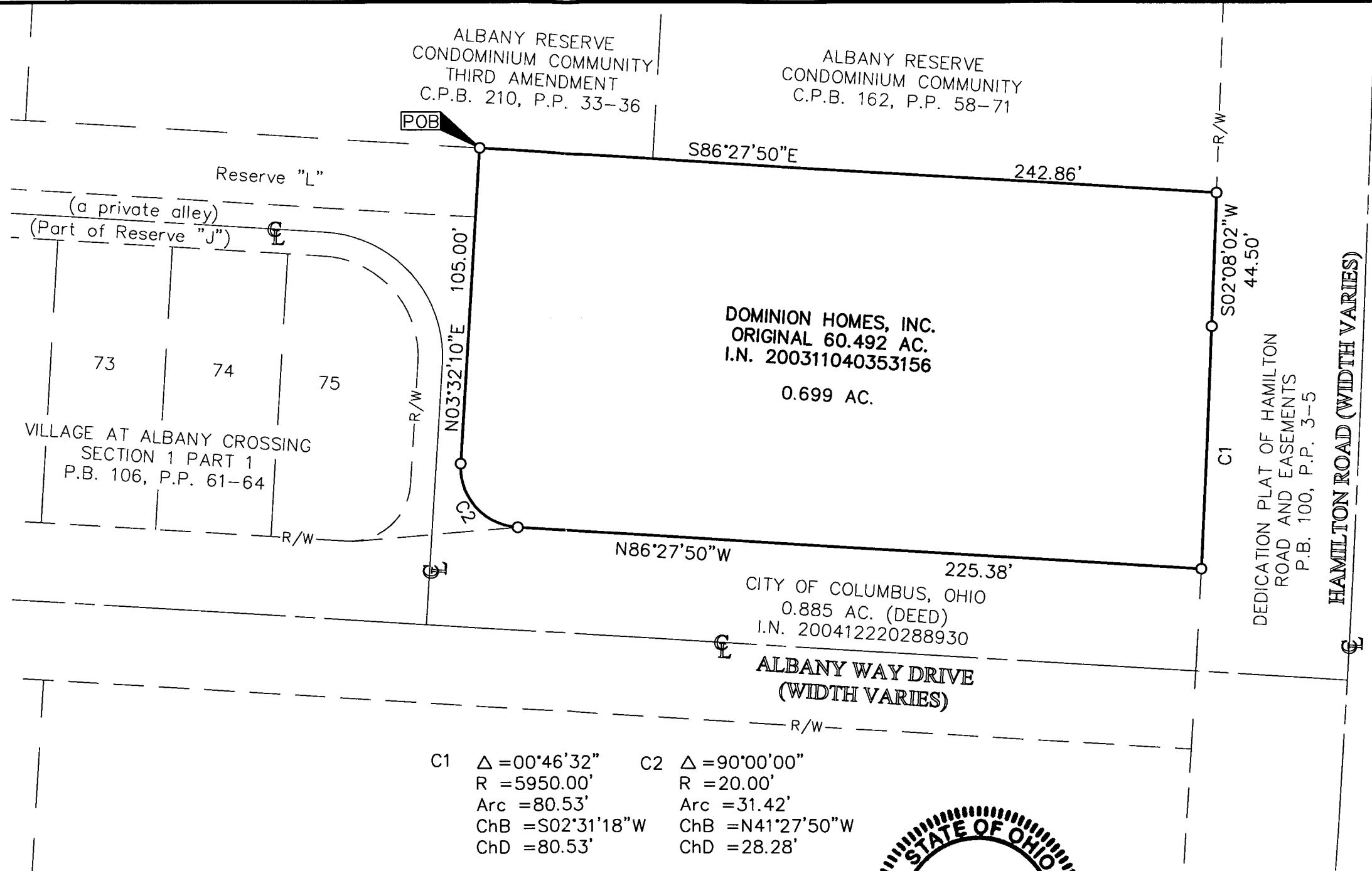
RECEIVED

NOV 4 2010

Franklin County Engineer  
Dean C Ringle, PE., PS.

**SURVEY NOTE:**  
This survey was prepared using documents of record, and a field survey performed by EMH&T, in 2003.

**FEMA NOTE:**  
According to the Federal Emergency Management Agency's Flood Insurance Map (dated June 17, 2008), the subject tract shown hereon lies within Zone X (areas determined to be outside of the 2% annual chance floodplain), Community Panel No. 39049C0201 K.



- = STONE FND.
- = MON. FND.
- = I.P. FND.
- = I.P. SET
- = MAG. NAIL FND.
- = MAG. NAIL SET
- ▲ = R.R. SPK. FND.
- △ = R.R. SPK. SET
- ◆ = P.K. NAIL FND.

I.P. Set are 13/16" I.D. iron pipe with cap inscribed EMHT INC

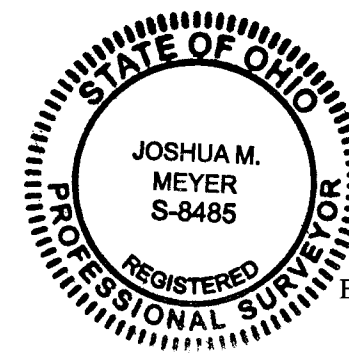


GRAPHIC SCALE (in feet)

C1	Δ = 00°46'32"	C2	Δ = 90°00'00"
	R = 5950.00'		R = 20.00'
	Arc = 80.53'		Arc = 31.42'
	ChB = S02°31'18"W		ChB = N41°27'50"W
	ChD = 80.53'		ChD = 28.28'

**BASIS OF BEARINGS:**

Bearings are based on The Ohio State Plane Coordinate System (South Zone) as per NAD83, 1986 adjustment. Control for bearings was from coordinates of Franklin County Geodetic Survey Control Monuments 8824, and 8825, having a calculated bearing of North 86 degrees 29 minutes 28 seconds West, established by the Franklin County Engineering Department, using Global Positioning Systems procedures and equipment.



By *Joshua M. Meyer*  
Professional Surveyor No. 8485  
Joshua M. Meyer

11-3-2010  
Date