

EXHIBIT B

METRO NORTH BUSINESS PARK
P.B. 66, PG. 71

TRIPLEX COMPANY
273-007304
2.993 ACRES
O.R. 28091 G08

LOT 1

0.058 ACRES

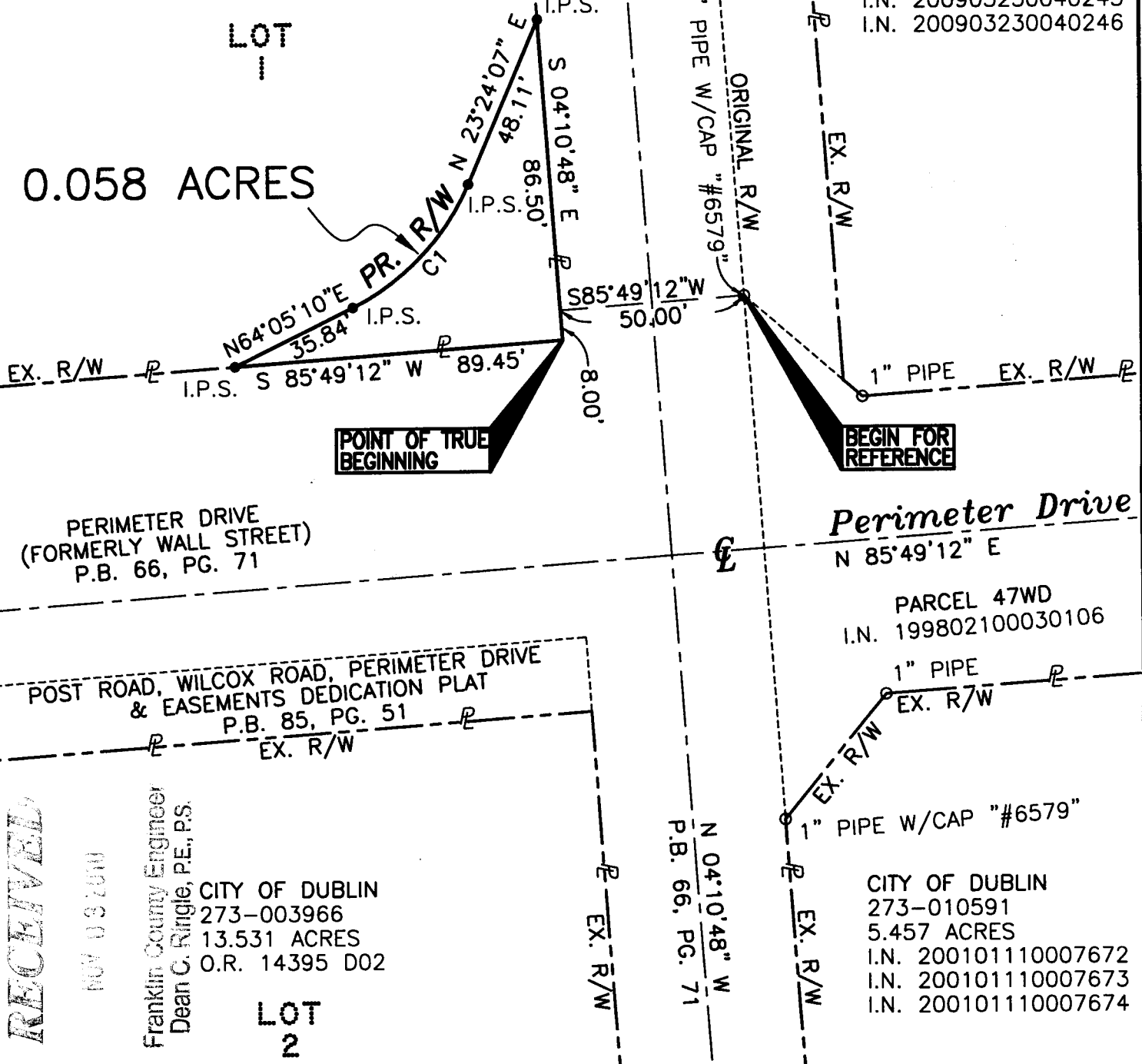
Commerce Parkway (50')
P.B. 66, PG. 71

PARCEL 19-WDV
I.N. 201005070056712

CITY OF DUBLIN
273-012291
13.895 ACRES
I.N. 200903230040244
I.N. 200903230040245
I.N. 200903230040246



tbaker U:\1\560861\5\transportation\design\drawing\Legal Exhibits\Triplex Company-WJD.dwg Layout1 Layout NOV 02, 2010 1:56 PM



PERIMETER DRIVE
(FORMERLY WALL STREET)
P.B. 66, PG. 71

Perimeter Drive
N 85°49'12" E

POST ROAD, WILCOX ROAD, PERIMETER DRIVE
& EASEMENTS DEDICATION PLAT
P.B. 85, PG. 51

PARCEL 47WD
I.N. 199802100030106

NOV 03 2010

Franklin County Engineer
Dean C. Ringle, P.E., P.S.

CITY OF DUBLIN
273-003966
13.531 ACRES
O.R. 14395 D02

LOT 2

PARCEL 66, PG. 71
N 04°10'48" W

CITY OF DUBLIN
273-010591
5.457 ACRES
I.N. 200101110007672
I.N. 200101110007673
I.N. 200101110007674

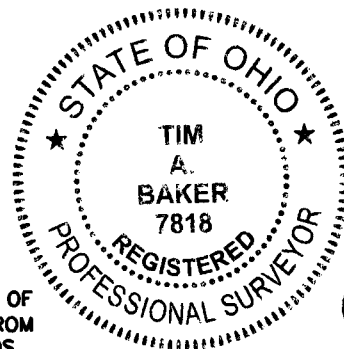
NUMBER	DELTA ANG.	RADIUS	ARC LEN	CHORD BEARING	CHORD
C1	40°41'03" LT.	65.65'	46.62'	N 43°44'38" E	45.64'

MONUMENT LEGEND

- R.R.S. FOUND
- REBAR FOUND
- IRON PIN FOUND
- ⊙ R/W MONUMENT FD
- 3/4" IRON PIPE SET WITH RED CAP "STANTEC"

BASIS OF BEARINGS

THE BEARINGS ARE BASED ON THE CENTERLINE OF COMMERCE PARKWAY AS BEING N04°10'48"W, FROM AN ACTUAL FIELD SURVEY USING G.P.S. METHODS FROM FRANKLIN COUNTY MONUMENTS #5417, #4463, AND #N8-94, FROM THE OHIO STATE PLANE COORDINATE SYSTEM, SOUTH ZONE, NORTH AMERICAN DATUM 1983 (1986 ADJUSTMENT).



0.058 ACRE RIGHT-OF-WAY PARCEL COMMERCE PKWY. & PERIMETER DR.

FRANKLIN COUNTY, CITY OF DUBLIN, OHIO
VIRGINIA MILITARY SURVEY 2542



SCALE IN FEET
Prepared By

Stantec Consulting Services, Inc.
1500 Lake Shore Drive, Suite 100
Columbus, Ohio 43204
Phone: (614) 486-4383

Stantec

Tim Baker
Registered Surveyor #7818

11-2-10
Date