

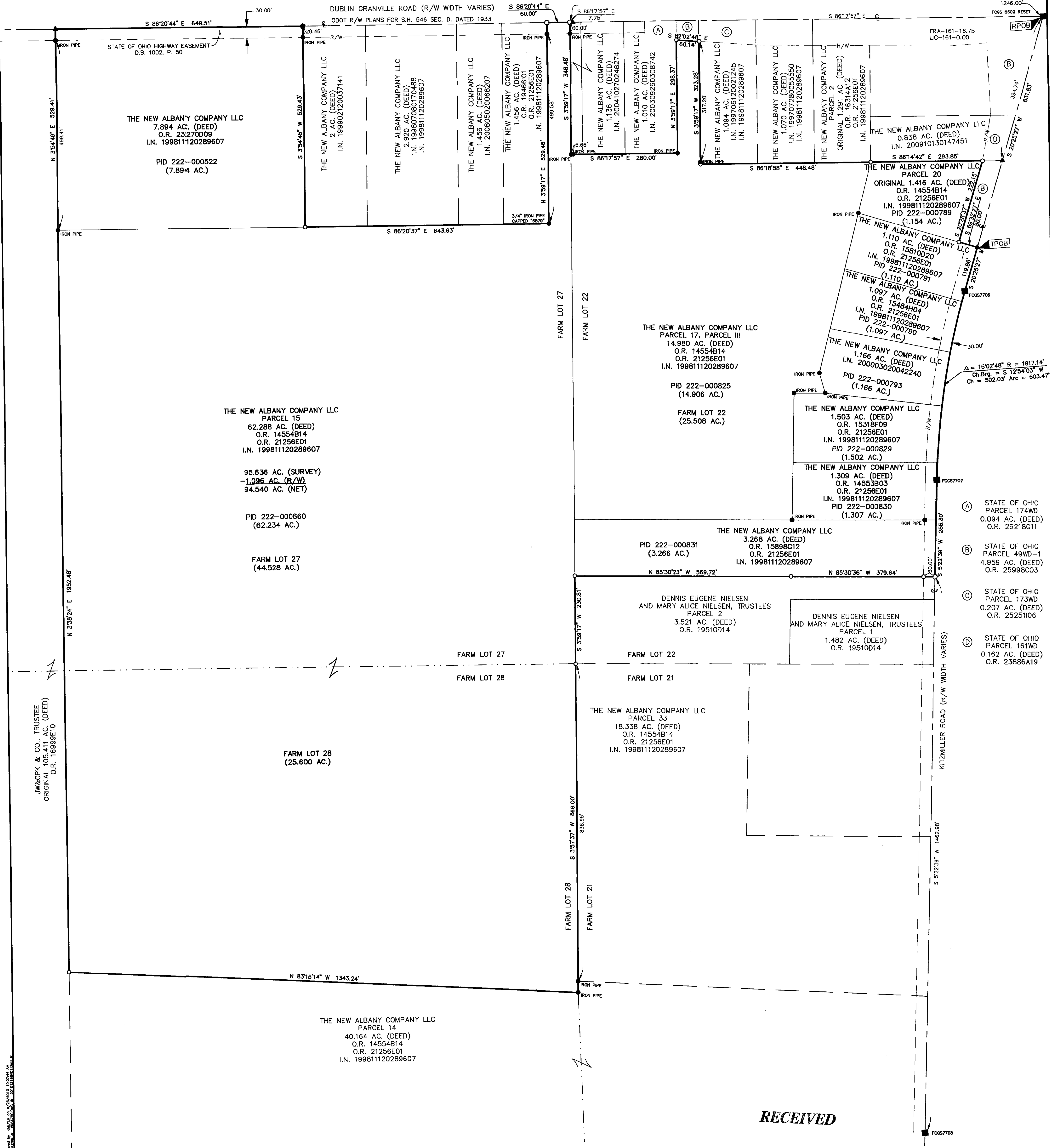
SURVEY OF ACREAGE TRACT

FARM LOTS 22, 27 AND 28, QUARTER TOWNSHIP 4, TOWNSHIP 2, RANGE 16

UNITED STATES MILITARY LANDS

VILLAGE OF NEW ALBANY, COUNTY OF FRANKLIN, STATE OF OHIO

2-4-B



RECEIVED

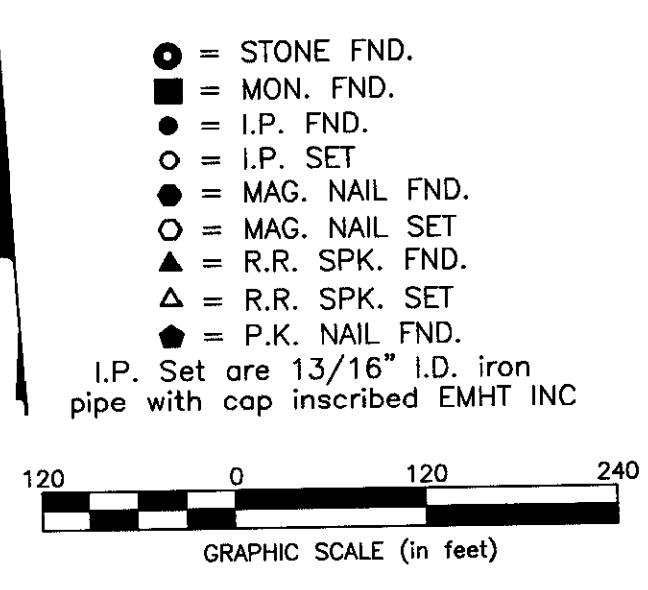
Franklin County Engineer
Dean C. Ringle, P.E., P.S.



By Edward J. Miller Date 9/23/10
Professional Surveyor No. 8250

BASIS OF BEARINGS:
Bearings are based on the Ohio State Plane Coordinate System as per NAD 83 (South Zone, 1986 adjustment). Control for bearings was from coordinates of monuments 6609 Reset and 7706, with a bearing of North 86° 20' 44" West for a portion of the centerline of Dublin Granville Road, established by the Franklin County Engineering Department, using Global Positioning System procedures and equipment.

SURVEY NOTE:
This survey was prepared using documents of record, prior plats of survey, and observed evidence located by an actual field survey.



EMHT		Date: September 23, 2010
Evans, Mechwart, Hamilton & Tilton, Inc. Engineers - Surveyors - Planners - Scientists 5500 New Albany Road, Columbus, OH 43054 Phone: 614.775.4500 Toll Free: 888.775.3448		Scale: 1" = 120'
emht.com		Job No: 2010-1216
		Sheet: 1 of 1
REVISIONS		
MARK	DATE	DESCRIPTION