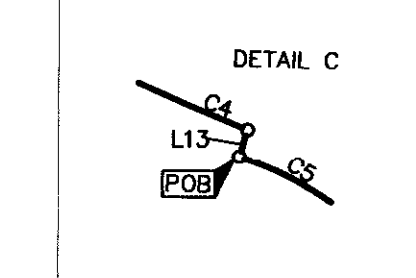
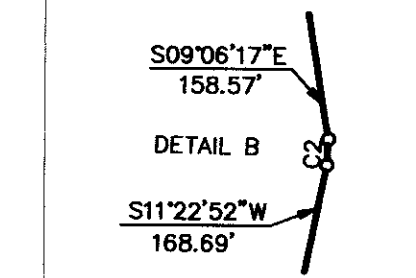
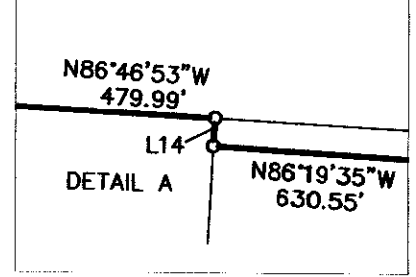
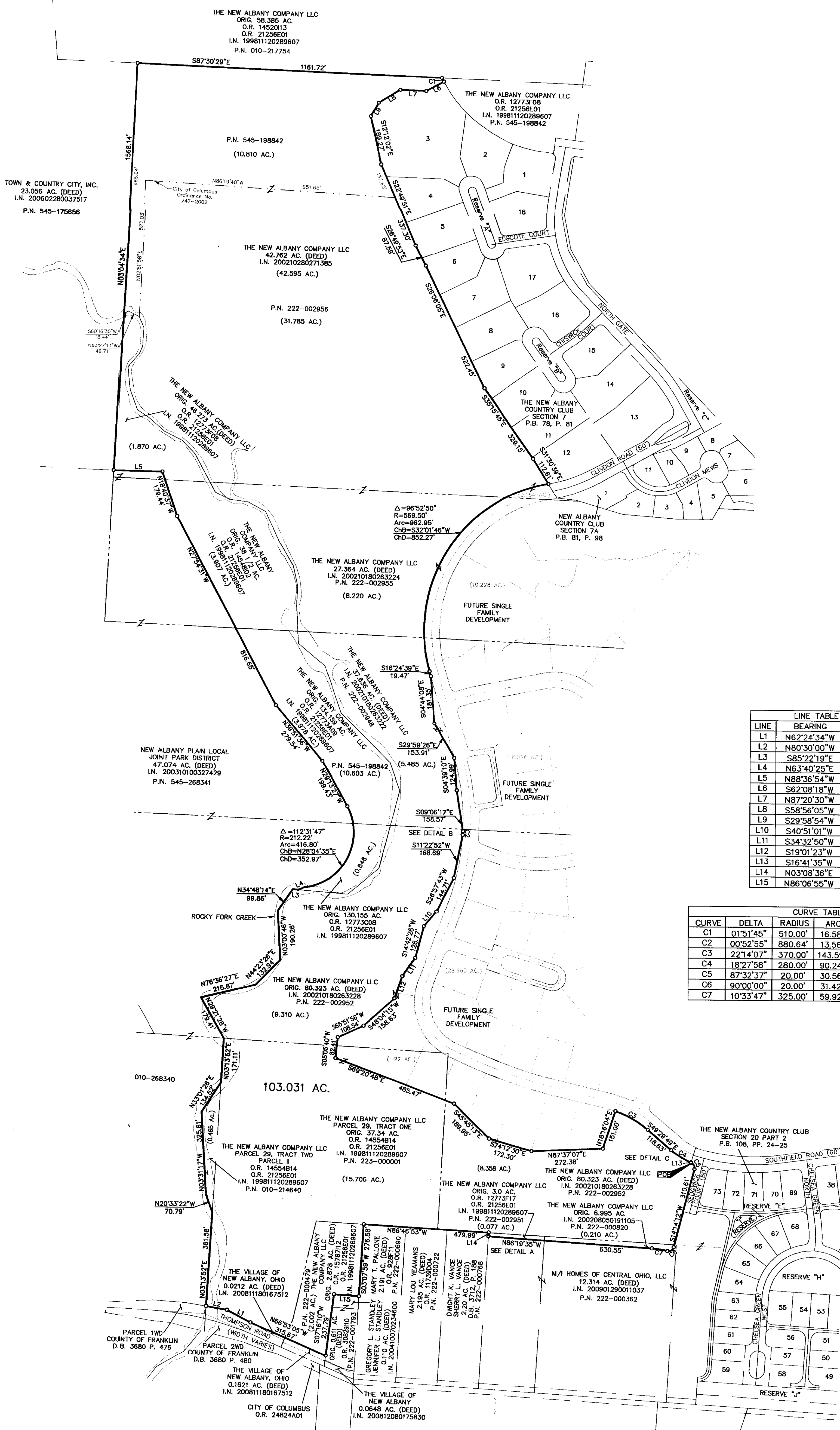


SURVEY OF ACREAGE PARCELS

QUARTER TOWNSHIP 3, TOWNSHIP 2, RANGE 16
UNITED STATES MILITARY LANDS

VILLAGE OF NEW ALBANY AND CITY OF COLUMBUS, COUNTY OF FRANKLIN, STATE OF OHIO

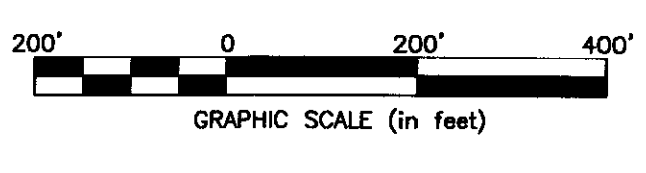


LINE	BEARING	DISTANCE
L1	N62°24'34\"W	101.79'
L2	N80°30'00\"W	80.97'
L3	S85°22'19\"E	21.54'
L4	N63°40'25\"E	21.23'
L5	N88°36'54\"W	183.22'
L6	S62°08'18\"W	77.00'
L7	N87°20'30\"W	98.54'
L8	S58°56'05\"W	96.90'
L9	S29°58'54\"W	60.03'
L10	S40°51'01\"W	75.58'
L11	S34°32'50\"W	85.20'
L12	S19°01'23\"W	90.38'
L13	S16°41'35\"W	1.84'
L14	N03°08'36\"E	14.46'
L15	N86°06'55\"W	94.44'

CURVE	DELTA	RADIUS	ARC	CH BRG	CH
C1	01°51'45\"	510.00'	16.58'	S26°55'50\"E	16.58'
C2	00°52'55\"	880.64'	13.56'	S02°40'15\"W	13.56'
C3	22°14'07\"	370.00'	143.59'	S60°36'53\"E	142.69'
C4	18°27'58\"	280.00'	90.24'	S58°43'48\"E	89.85'
C5	87°32'37\"	20.00'	30.56'	S29°32'07\"E	27.67'
C6	90°00'00\"	20.00'	31.42'	S59°14'12\"W	28.28'
C7	10°33'47\"	325.00'	59.92'	N81°02'42\"W	59.83'

- = STONE FND.
 - = MON. FND.
 - = I.P. FND.
 - = I.P. SET
 - = MAG. NAIL FND.
 - = MAG. NAIL SET
 - ▲ = R.R. SPK. FND.
 - △ = R.R. SPK. SET
 - = P.K. NAIL FND.
- I.P. Set are 13/16\" I.D. iron pipe with cap inscribed EMHT INC

BASIS OF BEARINGS:
The Bearings shown hereon are based on the same meridian as the bearings shown on the subdivision plat entitled "The New Albany Country Club Section 6", of record in Plat Book 76, Pages 54 and 55, Recorder's Office, Franklin County, Ohio. On said plat of record a portion of the centerline of Alpath Road has a bearing of South 86°58'22\" East.



By Walter A. King 2/23/10
Professional Surveyor No. 8307 Date

EMHT Evans, Mechwart, Hambleton & Titton, Inc. Engineers • Surveyors • Planners • Scientists 5500 New Albany Road, Columbus, OH 43064 Phone: 614.775.4500 Toll Free: 888.775.3648 emht.com		Date: February 12, 2010
Scale: 1" = 200'		Job No: 2010-0051
Sheet: 1 of 1		REVISIONS
MARK	DATE	DESCRIPTION
sq	2/22/10	Revise per FC - add parcel line between 222-002956 & 545-198842

RECEIVED
FRANKLIN COUNTY ENGINEER
Dean C. Ringler, P.E., P.S.