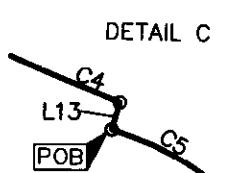
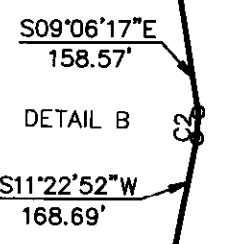
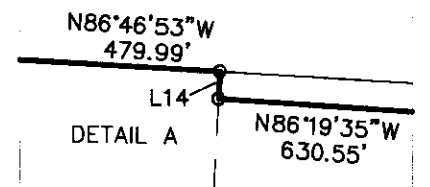
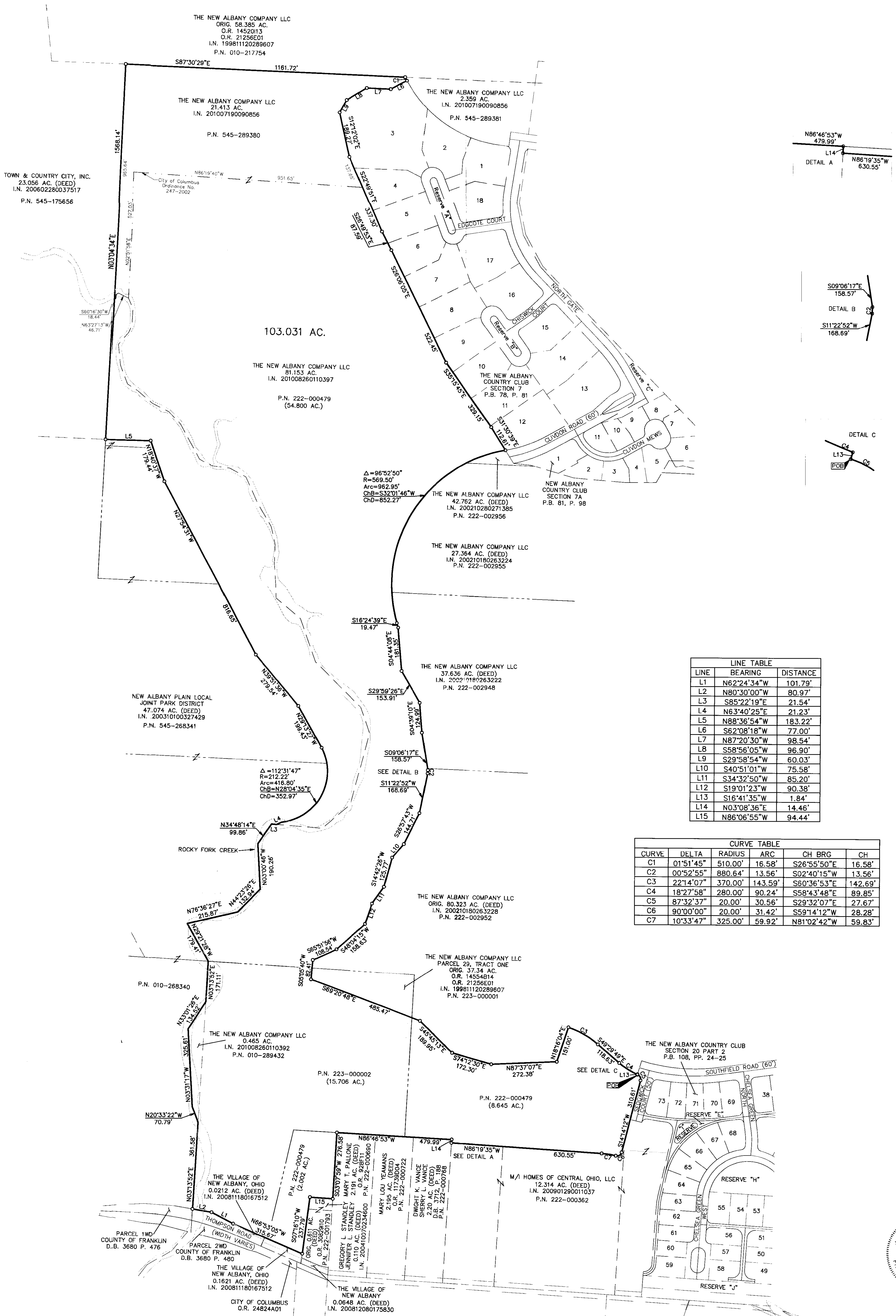


SURVEY OF ACREAGE PARCELS

QUARTER TOWNSHIP 3, TOWNSHIP 2, RANGE 16

UNITED STATES MILITARY LANDS

VILLAGE OF NEW ALBANY AND CITY OF COLUMBUS, COUNTY OF FRANKLIN, STATE OF OHIO



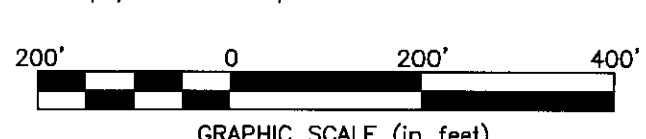
LINE	BEARING	DISTANCE
L1	N62°24'34\"/>	

CURVE	DELTA	RADIUS	ARC	CH BRG	CH
C1	01°51'45\"/>				



- = STONE FND.
 - = MON. FND.
 - = I.P. FND.
 - = I.P. SET
 - = MAG. NAIL FND.
 - = MAG. NAIL SET
 - ▲ = R.R. SPK. FND.
 - △ = R.R. SPK. SET
 - = P.K. NAIL FND.
- I.P. Set are 13/16" I.D. iron pipe with cap inscribed EMHT INC

BASIS OF BEARINGS:
 The Bearings shown hereon are based on the same meridian as the bearings shown on the subdivision plat entitled "The New Albany Country Club Section 6", of record in Plat Book 76, Pages 54 and 55, Recorder's Office, Franklin County, Ohio. On said plat of record a portion of the centerline of Alpath Road has a bearing of South 86°58'22" East.



By *Edward J. Miller*
 Professional Surveyor No. 8250 Date

RECEIVED

Franklin County Engineer
 Dean C. Ringler P.E., P.S.

EMHT		Date: February 12, 2010
Evans, Mechwart, Hambleton & Tilton, Inc. Engineers • Surveyors • Planners • Scientists 5500 New Albany Road, Columbus, OH 43254 Phone: 614.775.4500 Fax: 614.775.3448		Scale: 1" = 200'
emht.com		Job No: 2010-0051
REVISIONS		Sheet: 1 of 1
MARK	DATE	DESCRIPTION
sg	2/22/10	Revise per FC - add parcel line between 222-002956 & 545-198842
HJK	8/30/10	Revisions per parcel transfer/combination