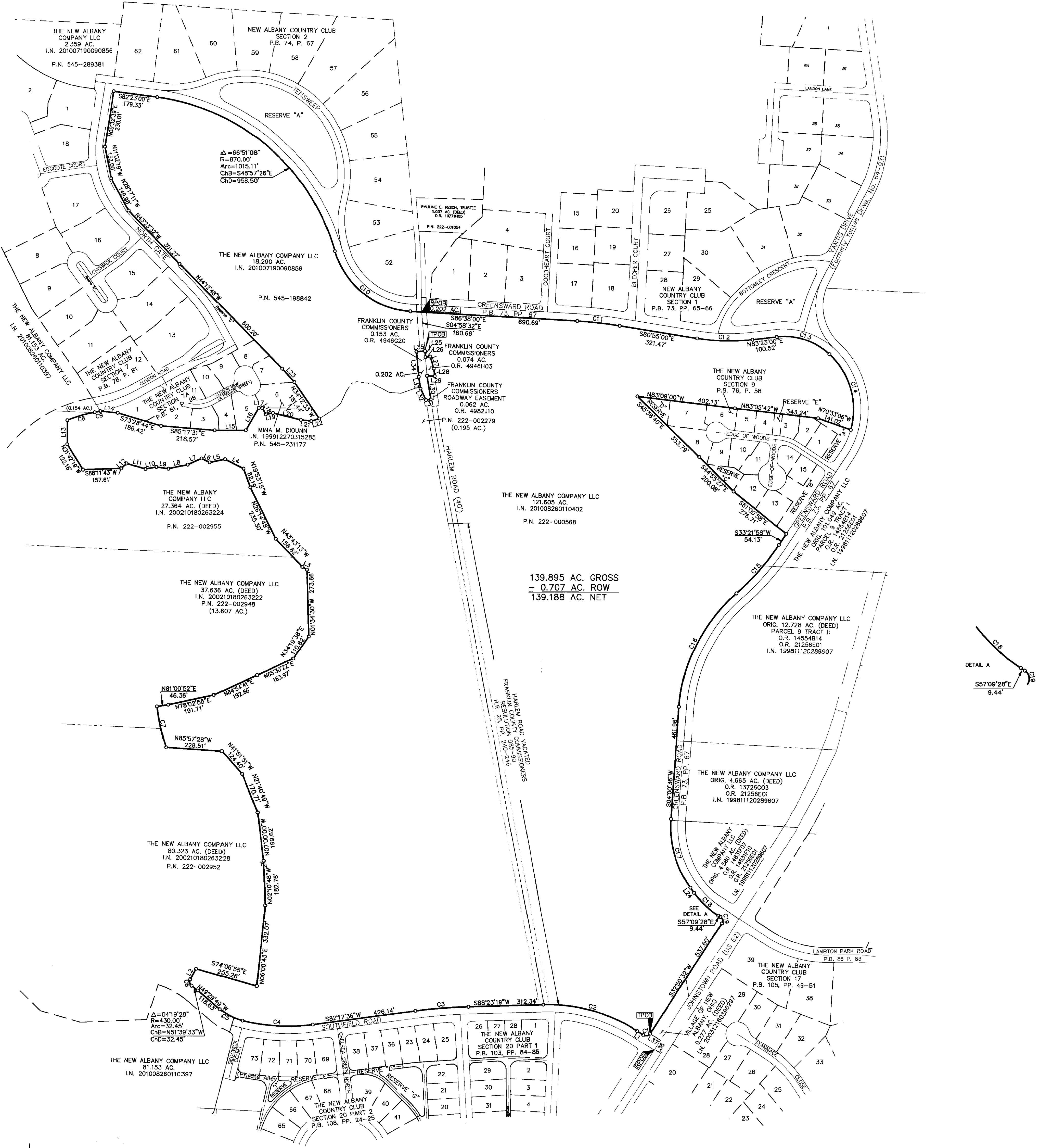


SURVEY OF ACREAGE PARCELS

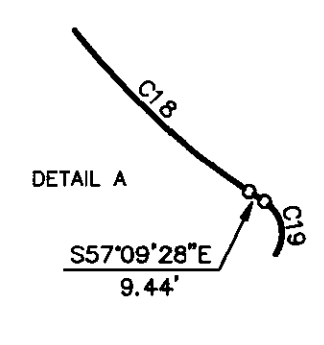
QUARTER TOWNSHIP 3, TOWNSHIP 2, RANGE 16

UNITED STATES MILITARY LANDS

VILLAGE OF NEW ALBANY AND CITY OF COLUMBUS, COUNTY OF FRANKLIN, STATE OF OHIO



139.895 AC. GROSS
 - 0.707 AC. ROW
 139.188 AC. NET

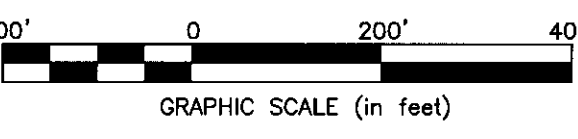


LINE	BEARING	DISTANCE
L1	N57°09'28"W	30.00'
L2	N29°17'09"E	48.86'
L3	N58°26'14"W	21.65'
L4	N63°21'38"W	84.83'
L5	S78°36'56"W	64.01'
L6	N64°24'37"W	36.70'
L7	S66°28'46"W	62.17'
L8	S77°09'03"W	78.62'
L9	N81°45'43"W	49.70'
L10	S79°52'51"W	45.76'
L11	N73°53'05"W	81.11'
L12	S47°49'37"W	30.02'
L13	N00°06'34"E	98.40'
L14	S84°26'33"E	71.22'
L15	N89°45'33"E	126.87'
L16	N29°56'44"E	106.17'
L17	S89°35'03"E	13.97'
L18	S28°59'42"E	30.70'
L19	N79°07'02"E	29.65'
L20	S76°15'22"E	117.84'
L21	S83°19'06"E	43.52'
L22	N72°06'40"E	33.87'
L23	N42°19'23"W	73.93'
L24	S35°40'59"E	26.37'
L25	S04°58'30"E	25.04'
L26	N85°01'23"E	20.00'
L27	S16°17'04"E	50.99'
L28	S07°18'55"E	31.00'
L29	N87°16'25"W	31.55'
L30	S08°56'58"E	98.26'
L31	S81°03'02"W	20.00'
L32	N25°38'53"W	52.20'
L33	N08°57'01"W	49.47'
L34	N04°58'32"W	103.01'
L35	N85°01'28"E	35.00'
L36	N32°50'32"E	50.00'
L37	N57°09'28"W	50.00'

CURVE	DELTA	RADIUS	ARC	CH BRG	CH
C1	90°00'00"	20.00'	31.42'	S77°50'32"W	28.28'
C2	34°27'13"	680.00'	408.90'	N74°23'04"W	402.77'
C3	6°05'44"	2030.00'	215.97'	S85°20'28"W	215.86'
C4	21°40'55"	770.00'	291.39'	N86°51'57"W	289.65'
C5	26°31'40"	220.00'	101.86'	N62°45'39"W	100.95'
C6	83°06'26"	20.00'	29.01'	N12°16'04"W	26.53'
C7	11°24'21"	870.00'	173.19'	N12°30'16"W	172.90'
C8	13°11'59"	509.50'	117.38'	N73°52'11"E	117.12'
C9	2°18'50"	595.00'	24.03'	N79°18'46"E	24.03'
C10	7°10'08"	340.00'	421.93'	S51°04'56"E	395.37'
C11	5°43'00"	1770.00'	176.60'	S83°46'30"E	176.53'
C12	15°42'00"	830.00'	227.43'	S88°46'00"E	226.72'
C13	49°36'13"	270.00'	233.75'	S71°48'55"E	226.52'
C14	62°43'41"	310.00'	339.39'	S15°38'55"E	322.69'
C15	15°38'54"	970.00'	264.92'	N41°11'25"E	264.10'
C16	45°00'16"	680.00'	534.12'	S26°30'44"W	520.50'
C17	39°41'36"	430.00'	297.89'	S15°50'12"E	291.97'
C18	21°28'28"	362.98'	136.05'	S46°25'13"E	135.25'
C19	90°00'00"	20.00'	31.42'	S12°09'28"E	28.28'

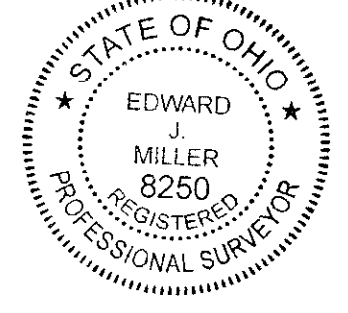
BASIS OF BEARINGS:
 The Bearings shown hereon are based on the same meridian as the bearings shown on the subdivision plat entitled "The New Albany Country Club Section 6", of record in Plat Book 76, Pages 54 and 55, Recorder's Office, Franklin County, Ohio. On said plat of record a portion of the centerline of Yantis Drive has a bearing of South 12°54'44" East.

- = STONE FND.
- = MON. FND.
- = I.P. FND.
- = I.P. SET
- = MAG. NAIL FND.
- = MAG. NAIL SET
- ▲ = R.R. SPK. FND.
- △ = R.R. SPK. SET
- = P.K. NAIL FND.
- I.P. Set are 13/16" I.D. iron pipe with cap inscribed EMHT INC



RECEIVED

Franklin County Engineer
Dean C. Raggio, P.E., P.S.



By _____
 Professional-Surveyor No. 8250 Date _____

	Date: February 11, 2010
	Scale: 1" = 200'
Job No: 2010-0051 Sheet: 1 of 1	
REVISIONS	
MARK DATE DESCRIPTION sg 2/22/10 Revise per FC - correct P.N. 222-002965 HLK 8/30/10 Revisions per parcel transfer/combination	