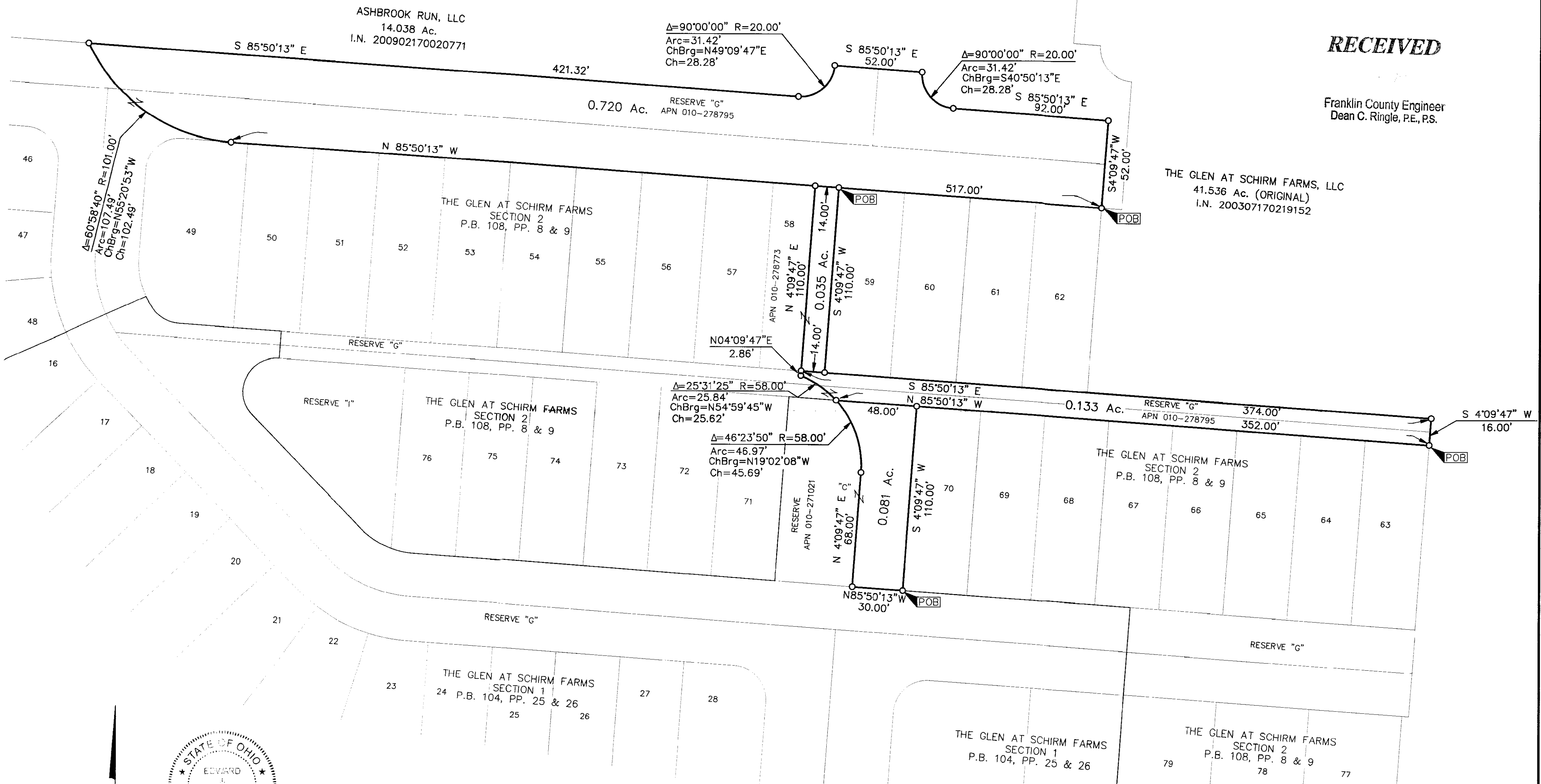


SURVEY OF ACREAGE PARCELS

SECTION 13, TOWNSHIP 11, RANGE 21

CONGRESS LANDS

CITY OF COLUMBUS, COUNTY OF FRANKLIN, STATE OF OHIO



RECEIVED

Franklin County Engineer
Dean C. Ringle, P.E., P.S.

THE GLEN AT SCHIRM FARMS, LLC
41.536 Ac. (ORIGINAL)
I.N. 200307170219152

ASHBROOK RUN, LLC
14.038 Ac.
I.N. 200902170020771

$\Delta=90^{\circ}00'00''$ R=20.00'
Arc=31.42'
ChBrg=N49°09'47"E
Ch=28.28'

$\Delta=90^{\circ}00'00''$ R=20.00'
Arc=31.42'
ChBrg=S40°50'13"E
Ch=28.28'

$\Delta=25^{\circ}31'25''$ R=58.00'
Arc=25.84'
ChBrg=N54°59'45"W
Ch=25.62'

$\Delta=46^{\circ}23'50''$ R=58.00'
Arc=46.97'
ChBrg=N19°02'08"W
Ch=45.69'

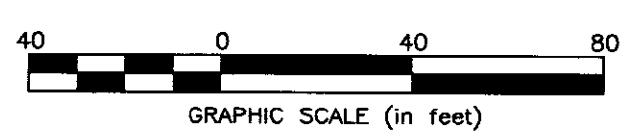


BASIS OF BEARINGS:
The Bearings shown hereon are based on the Ohio State Plane Coordinate System (South Zone) as per NAD83 (1986 Adjustment). Control for bearings was from coordinates of monuments FCGS 9936 and FCGS 9979, established by the Franklin County Engineering Department, using Global Positioning System procedures and equipment, having a bearing of North 04° 09' 47" East,

By _____
Professional Surveyor No. 8250

Date _____

○ = Iron Pin Set



EMHT		Date: August 19, 2010
Evans, Mechwart, Hambleton & Tilton, Inc. Engineers • Surveyors • Planners • Scientists 5500 New Albany Road, Columbus, OH 43054 Phone: 614.775.4500 Toll Free: 888.775.3648		Scale: 1" = 40'
emht.com		Job No: 20100906
		Sheet: 1 of 1
REVISIONS		
MARK	DATE	DESCRIPTION