

RECEIVED

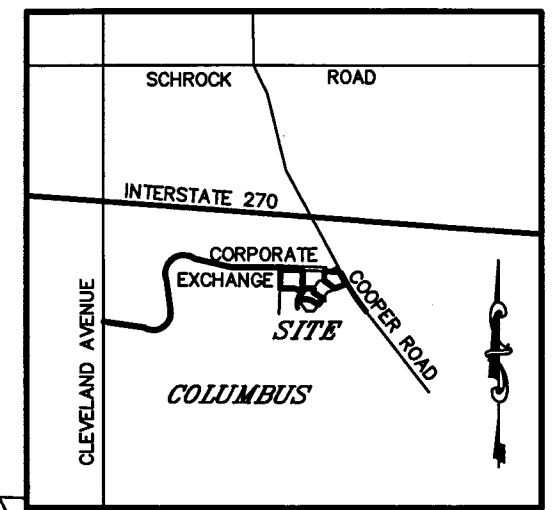
SEP 23 2010

Franklin County Engineer
Dean C. Ringle, P.E., P.S.

SITUATED IN THE STATE OF OHIO, COUNTY OF FRANKLIN, CITY OF COLUMBUS,
SECTION 2, TOWNSHIP-2, RANGE-17, UNITED STATES MILITARY LANDS

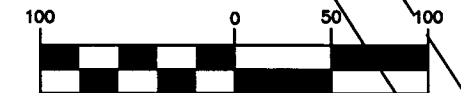
CASS INFORMATION
SYSTEMS, INC.
IN 200010170211430

CORPORATE EXCHANGE DRIVE
(PB 60, Pg 22)

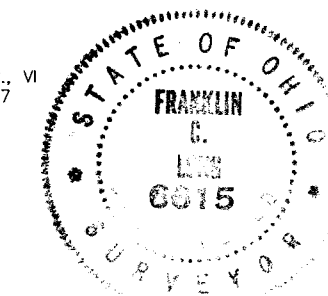


LOCATION MAP
NOT TO SCALE

GRAPHIC SCALE



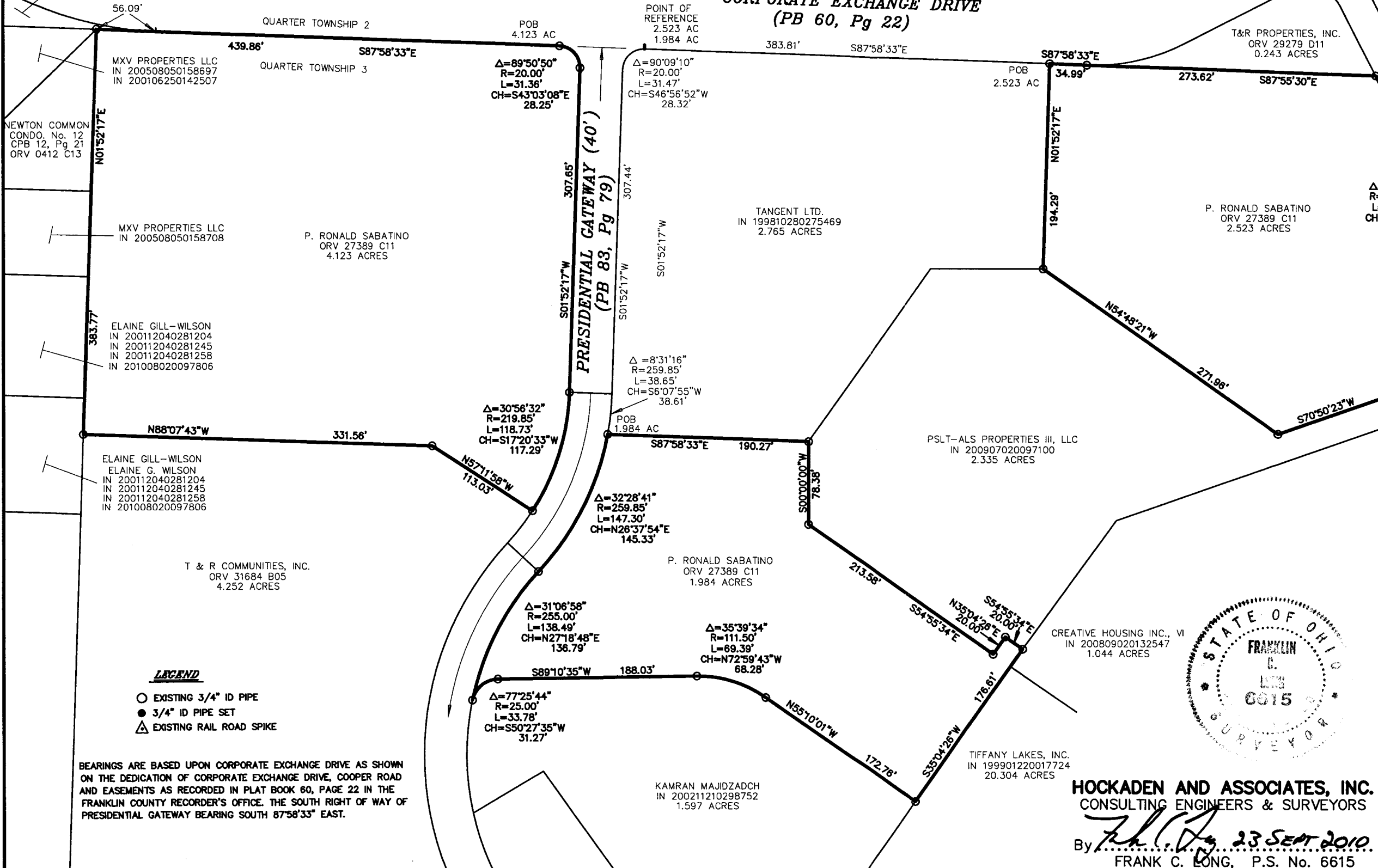
(IN FEET)
1 inch = 100 ft.



BOUNDARY SURVEY				
LOCATION NORTH OF COOPER WOODS WEST OF COOPER ROAD SOUTH OF CORPORATE EXCHANGE				
CLIENT T & R COMMUNITIES, INC.				
PREPARED BY: HOCKADEN AND ASSOCIATES, INC. Consulting Engineers & Surveyors 883 North Cassady Avenue Columbus, Ohio 43219 Telephone: (614) 282-0993 Fax: (614) 282-0444				
DRAWN BY: FCL	CHECKED BY: FCL	ORDER No. 42764/10.1	AREA No. 5-8	SHEET 1 OF 1
SCALE: 1"=50'		DATE: SEPT 2010		

HOCKADEN AND ASSOCIATES, INC.
CONSULTING ENGINEERS & SURVEYORS

By *Frank C. Long* 23 SEPT 2010
FRANK C. LONG, P.S. No. 6615



BEARINGS ARE BASED UPON CORPORATE EXCHANGE DRIVE AS SHOWN ON THE DEDICATION OF CORPORATE EXCHANGE DRIVE, COOPER ROAD AND EASEMENTS AS RECORDED IN PLAT BOOK 60, PAGE 22 IN THE FRANKLIN COUNTY RECORDER'S OFFICE. THE SOUTH RIGHT OF WAY OF PRESIDENTIAL GATEWAY BEARING SOUTH 87°58'33" EAST.