

F-4-C



Evans, Mechwart, Hambleton & Tilton, Inc. Engineers • Surveyors • Planners • Scientists 5500 New Albany Road, Columbus, OH 43054 Phone: 614.775.4500 Toll Free: 888.775.3648 emht.com

# SURVEY OF ACREAGE PARCEL

QUARTER TOWNSHIP 4, TOWNSHIP 1, RANGE 19  
UNITED STATES MILITARY LANDS  
CITY OF UPPER ARLINGTON, COUNTY OF FRANKLIN, STATE OF OHIO

Date: September 17, 2010  
Scale: 1" = 100'  
Job No. 2008-1620

**BASIS OF BEARINGS:**  
The Bearings shown hereon are based on the Ohio State Plane Coordinate System South Zone as per NAD83 (1986 Adjustment). Control for bearings was from coordinates of monuments FCGS 6666 AND FCGS 6667, having a bearing of South 00° 00' 00" East, established by the Franklin County Engineering Department, using Global Positioning System procedures and equipment.

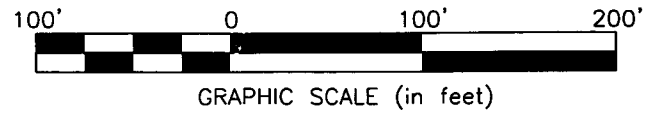
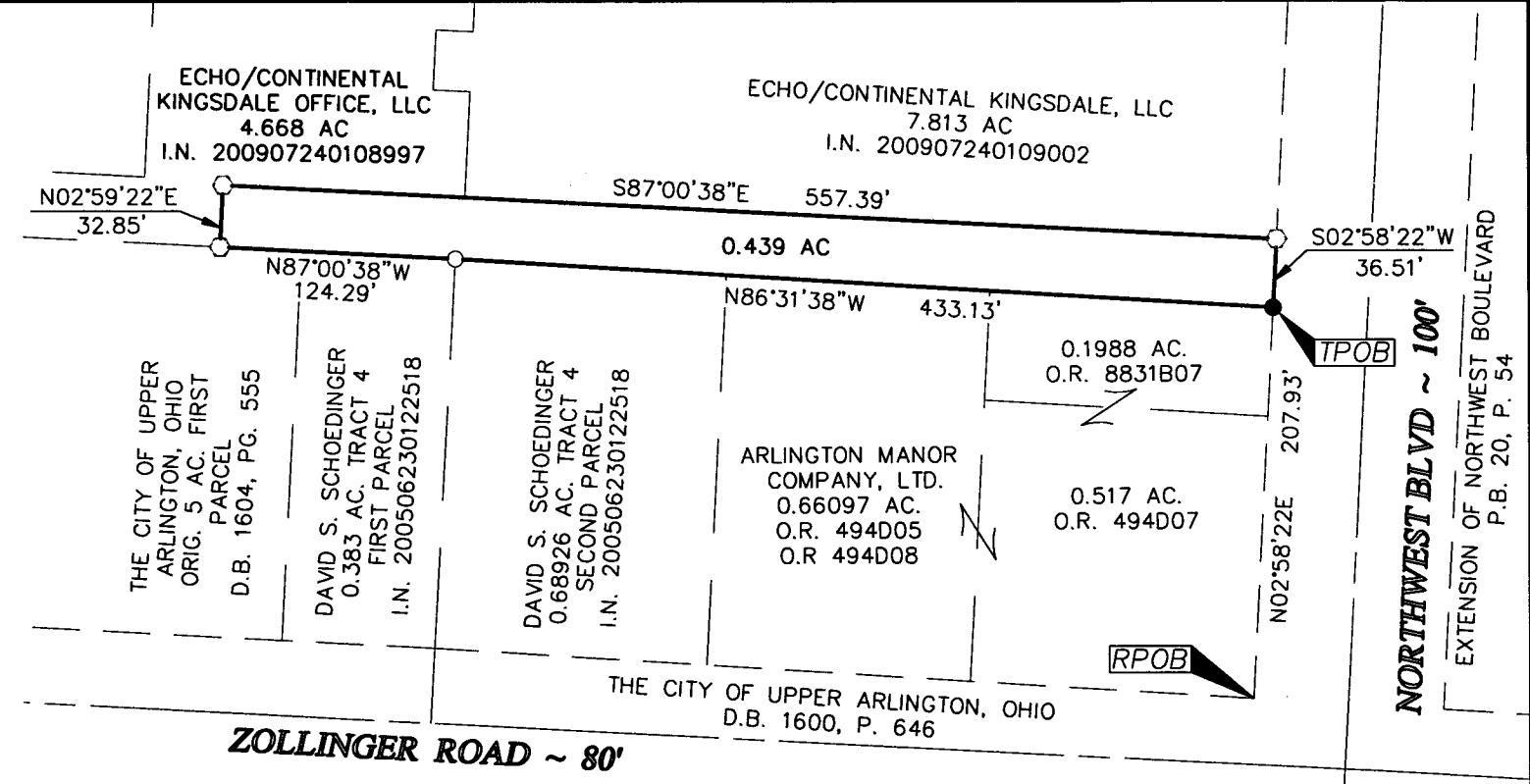
**SURVEY NOTE:**  
This survey was prepared using documents of record, prior plats of survey, and observed evidence located by an actual field survey.



By Heather L. King  
Heather L. King  
Professional Surveyor No. 8307

9/17/10  
Date

- = I.P. FND.
  - = I.P. SET
  - = MAG. NAIL SET
- I.P. Set are 13/16" I.D. iron pipe with cap inscribed EMHT INC



RECEIVED

SEP 20 2010

Franklin County Engineer  
Dean C. Ringle, P.E., P.S.