

H-2-A



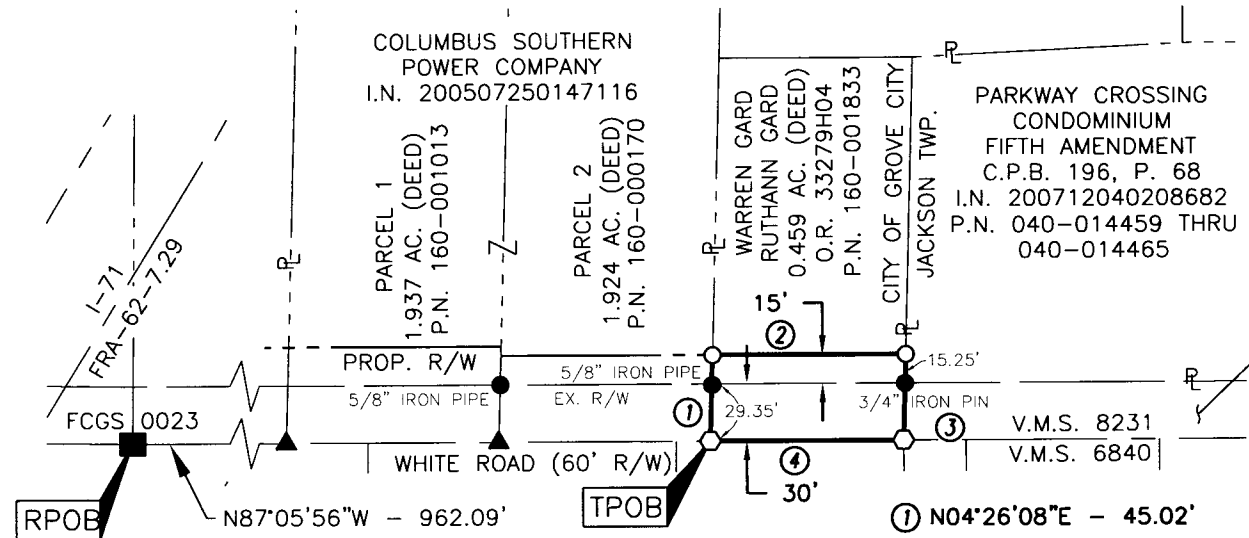
Evans, Mechwart, Hambleton & Tilton, Inc.
Engineers • Surveyors • Planners • Scientists
5500 New Albany Road, Columbus, OH 43054
Phone: 614.775.4500 Toll Free: 888.775.3648
emht.com

SURVEY OF ACREAGE PARCEL

SURVEY NUMBER 8231
VIRGINIA MILITARY DISTRICT
TOWNSHIP OF JACKSON, COUNTY OF FRANKLIN, STATE OF OHIO

Date:	08/27/10
Scale:	1" = 100'
Job No.	2010-0336

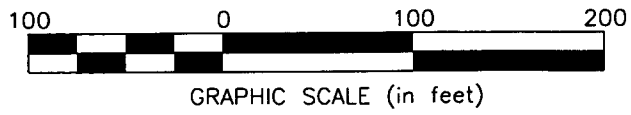
SURVEY NOTE:
This survey was prepared using documents of record, prior plats of survey, and observed evidence located by an actual field survey.



PARKWAY CROSSING, LLC
ORIG. 10.269 AC. (DEED)
I.N. 200505100088760

- = MON. FND.
- = I.P. FND.
- = I.P. SET
- = MAG. NAIL FND.
- = MAG. NAIL SET
- ▲ = R.R. SPK. FND.
- △ = R.R. SPK. SET

I.P. Set are 13/16" I.D. iron pipe with cap inscribed EMHT INC



0.103 AC. GROSS
-0.069 AC. P.R.O.
0.034 AC. NET

BASIS OF BEARINGS:
The Bearings shown hereon are based on the Ohio State Plane Coordinate System, South Zone per NAD83 (1986 Adjustment). Control for bearings was from coordinates of monuments FCGS 6633 and FCGS 0025. The portion of the centerline of White Road between monuments FCGS 6605 and FCGS 6606, having a bearing of South 85° 28' 28" East and monumented as shown hereon, is designated the "basis of bearing" for this survey.

- ① N04°26'08"E - 45.02'
- ② S87°05'56"E - 100.00'
- ③ S04°26'08"W - 45.02'
- ④ N87°05'56"W - 100.00'

RECEIVED

AUG 27 2010

Franklin County Engineer
Dean C. Ringle, P.E., P.S.

By  Professional Surveyor No. 8250
Date 8/27/10