

H-1-C M-2-A



Evans, Mechwart, Hambleton & Tilton, Inc.  
 Engineers • Surveyors • Planners • Scientists  
 5500 New Albany Road, Columbus, OH 43054  
 Phone: 614.775.4500 Toll Free: 888.775.3648

emht.com

# SURVEY OF ACREAGE PARCEL

SURVEY NUMBER 8231

VIRGINIA MILITARY DISTRICT

TOWNSHIP OF JACKSON, COUNTY OF FRANKLIN, STATE OF OHIO

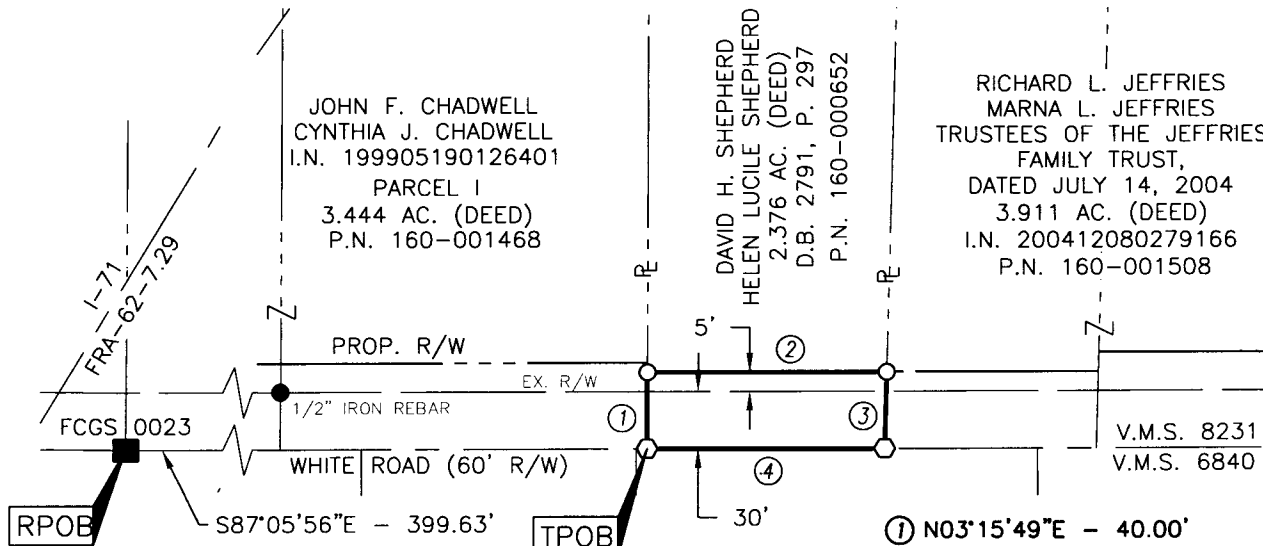
Date: 08/27/10

Scale: 1" = 100'

Job No. 2010-0336

**SURVEY NOTE:**

This survey was prepared using documents of record, prior plats of survey, and observed evidence located by an actual field survey.



0.113 AC. GROSS  
 -0.085 AC. P.R.O.  
 0.028 AC. NET

- ① N03°15'49"E - 40.00'
- ② S87°05'56"E - 123.69'
- ③ S04°33'31"W - 40.02'
- ④ N87°05'56"W - 122.79'



**RECEIVED**

AUG 27 2010

Franklin County Engineer  
 Dean C. Ringle, P.E., P.S.

- = MON. FND.
- = I.P. FND.
- = I.P. SET
- = MAG. NAIL FND.
- = MAG. NAIL SET

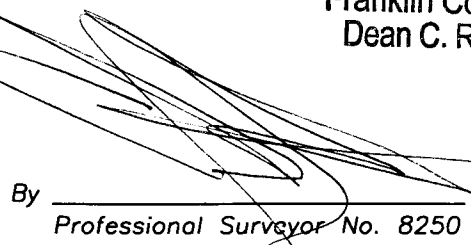
I.P. Set are 13/16" I.D. iron pipe with cap inscribed EMHT INC



GRAPHIC SCALE (in feet)

**BASIS OF BEARINGS:**

The Bearings shown hereon are based on the Ohio State Plane Coordinate System, South Zone per NAD83 (1986 Adjustment). Control for bearings was from coordinates of monuments FCGS 6633 and FCGS 0025. The portion of the centerline of White Road between monuments FCGS 6605 and FCGS 6606, having a bearing of South 85° 28' 28" East and monumented as shown hereon, is designated the "basis of bearing" for this survey.

By  Professional Surveyor No. 8250  
 Date 8/27/10