

I-8-E



Evans, Mechwart, Hambleton & Tilton, Inc.  
Engineers • Surveyors • Planners • Scientists  
5500 New Albany Road, Columbus, OH 43054  
Phone: 614.775.4500 Toll Free: 888.775.3648  
emht.com

### SURVEY OF ACREAGE PARCEL QUARTER TOWNSHIP 3, TOWNSHIP 2, RANGE 16 UNITED STATES MILITARY LANDS

CITY OF COLUMBUS, COUNTY OF FRANKLIN, STATE OF OHIO

Date: August 24, 2010

Job No. 2010-0051

Scale: 1" = 100'

NEW ALBANY PLAIN LOCAL  
JOINT PARK DISTRICT  
47.074 AC. (DEED)  
I.N. 200310100327429

P.N. 010-268340

THE NEW ALBANY COMPANY LLC  
PARCEL 29, TRACT ONE  
ORIG. 37.34 AC.  
O.R. 14554B14  
O.R. 21256E01  
I.N. 199811120289607

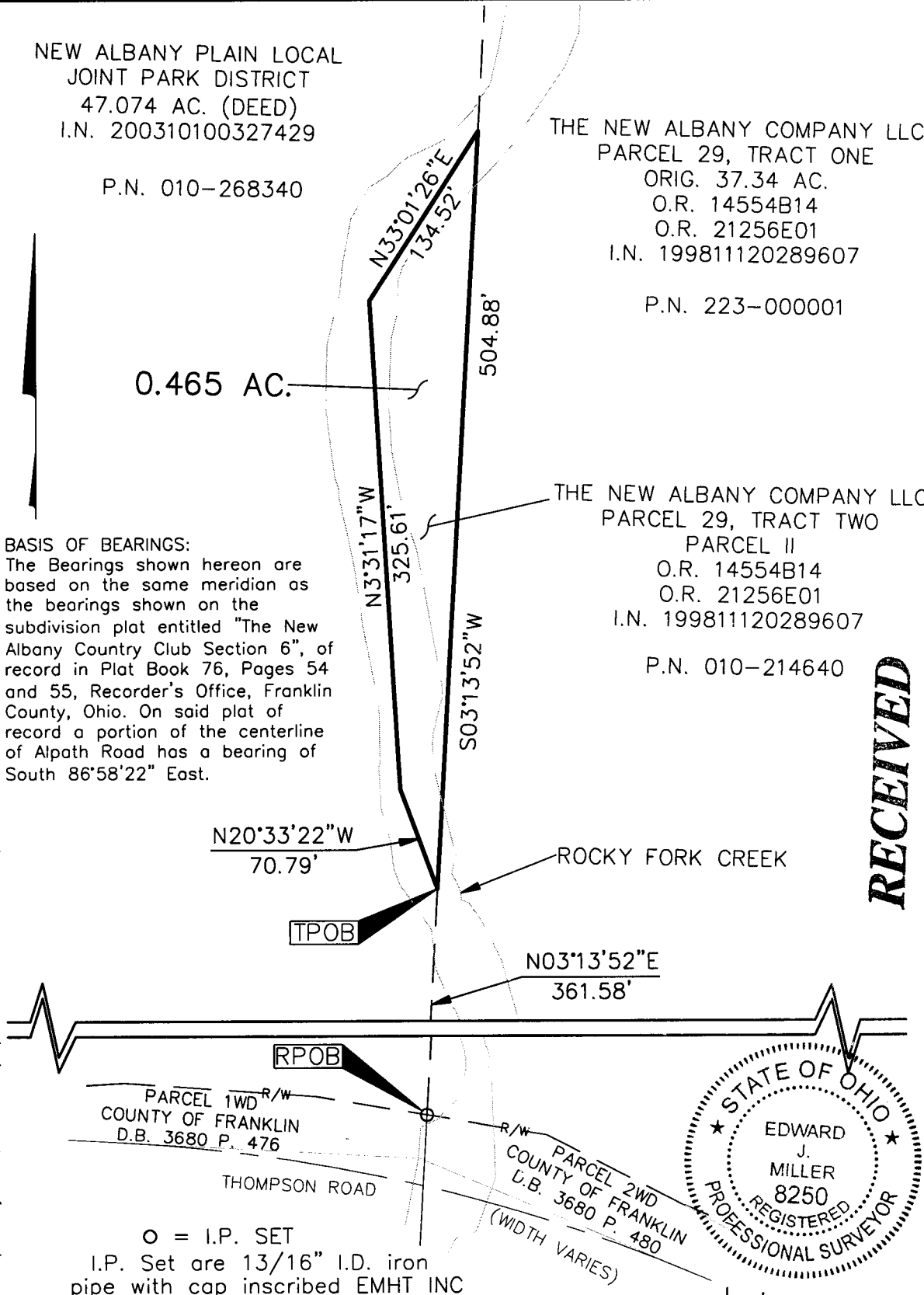
P.N. 223-000001

0.465 AC.

**BASIS OF BEARINGS:**

The Bearings shown hereon are based on the same meridian as the bearings shown on the subdivision plat entitled "The New Albany Country Club Section 6", of record in Plat Book 76, Pages 54 and 55, Recorder's Office, Franklin County, Ohio. On said plat of record a portion of the centerline of Alpath Road has a bearing of South 86°58'22" East.

U:\20100051\20100051\DWG\100051BV8.DWG plotted by GEIGER, STEVEN on 8/24/2010 4:07:59 PM last saved by SCEIGER on 8/24/2010 4:07:39 PM



N20°33'22"W  
70.79'

N3°31'17"W  
325.61'

N33°01'26"E  
134.52'

S03°13'52"W  
504.88'

N03°13'52"E  
361.58'

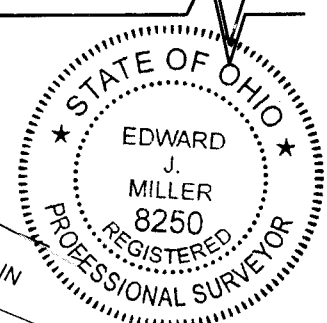
PARCEL 1WD R/W  
COUNTY OF FRANKLIN  
D.B. 3680 P. 476

PARCEL 2WD R/W  
COUNTY OF FRANKLIN  
D.B. 3680 P. 480  
(WIDTH VARIES)

○ = I.P. SET  
I.P. Set are 13/16" I.D. iron pipe with cap inscribed EMHT INC



GRAPHIC SCALE (in feet)



8/24/10

By \_\_\_\_\_  
Professional Surveyor No. 8250

RECEIVED

AUG 25 2010

Franklin County Engineer  
Dean C. Ringle, P.E., P.S.