

PREPARED BY:  
HOCKADEN AND ASSOCIATES, INC.  
Consulting Engineers & Surveyors  
883 North Cassady Avenue  
Columbus, Ohio 43219  
Telephone: (614) 252-0993  
Fax: (614) 252-0444

# LOT SPLIT SURVEY

SITUATED IN THE STATE OF OHIO, COUNTY OF FRANKLIN,  
BEING A PART OF LOT SIXTEEN (16) OF NORTHWOLD AMENDED  
PLAT NO. 2 AS RECORDED IN PLAT BOOK 17, PAGE 308 IN THE  
FRANKLIN COUNTY RECORDER'S OFFICE.

BEARINGS ARE BASED UPON THE SOUTHERLY LINE OF FENWAY ROAD  
AN ASSUMED BEARING OF SOUTH 85°11'13" EAST WAS USED AND ALL  
OTHER BEARINGS BASED UPON THIS MERIDIAN.

NORTHWOLD AMENDED  
PLAT NO. 2  
PLAT BOOK 17, PAGE 308

### LEGEND

- 3/4" ID PIPE FOUND
- 3/4" ID PIPE SET

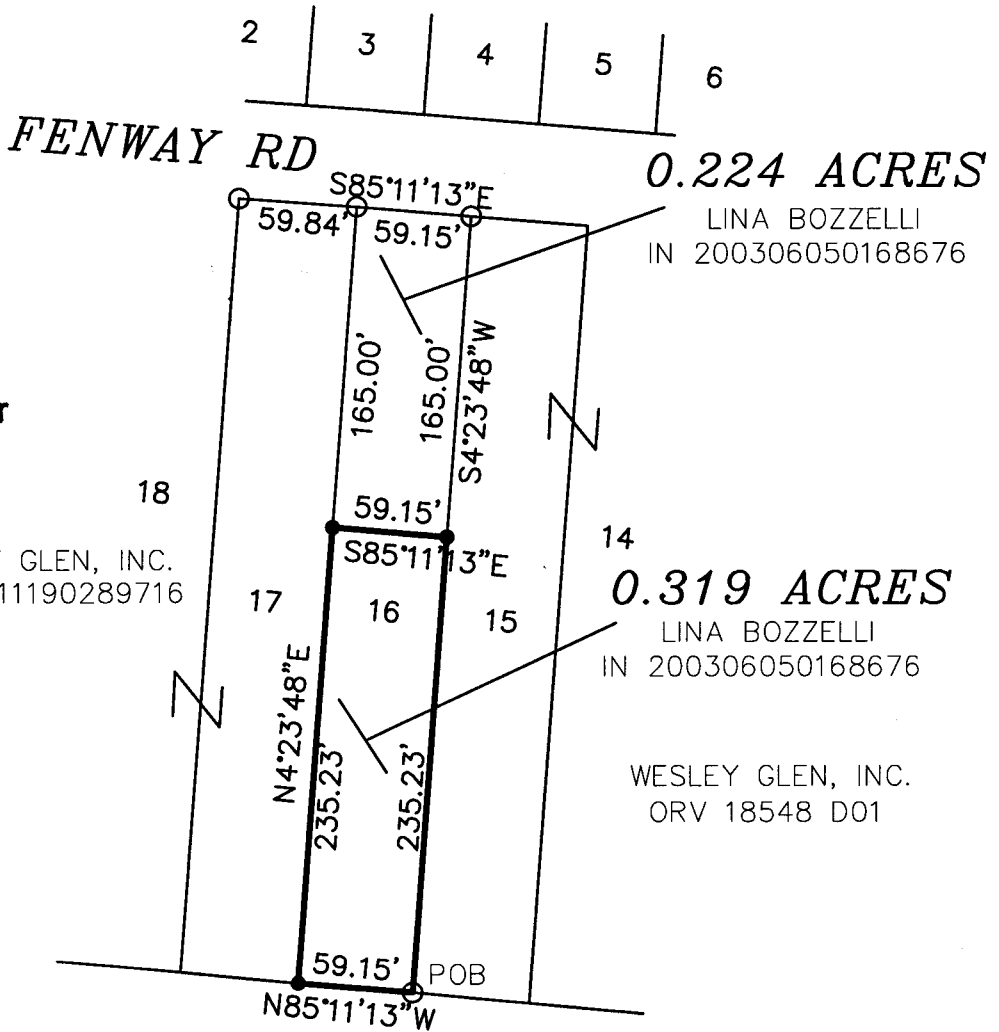
## RECEIVED

OCT 12 2010

Franklin County Engineer  
Dean C. Ringle, P.E., P.S.



18  
WESLEY GLEN, INC.  
IN 199911190289716



GRACELAND OWNER, INC.  
IN 200707200127547  
70.303 ACRES (DEED)

### GRAPHIC SCALE



( IN FEET )

1 inch = 100 ft.

SCALE: 1"=100'

DATE: 10-07-2010

REVISED DATES

42745/10.1

HOCKADEN AND ASSOCIATES, INC.  
CONSULTING ENGINEERS & SURVEYORS

By

*Frank C. Long*  
FRANK C. LONG, P.S. No. 6615

SURV'D	DRAWN	CHECKED
SUR. BY	FCL	CK BY

