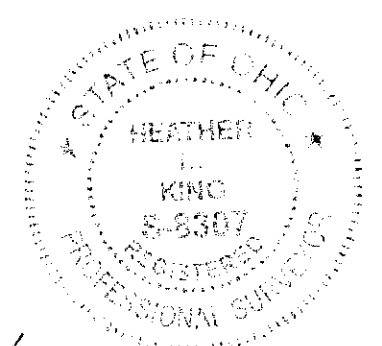
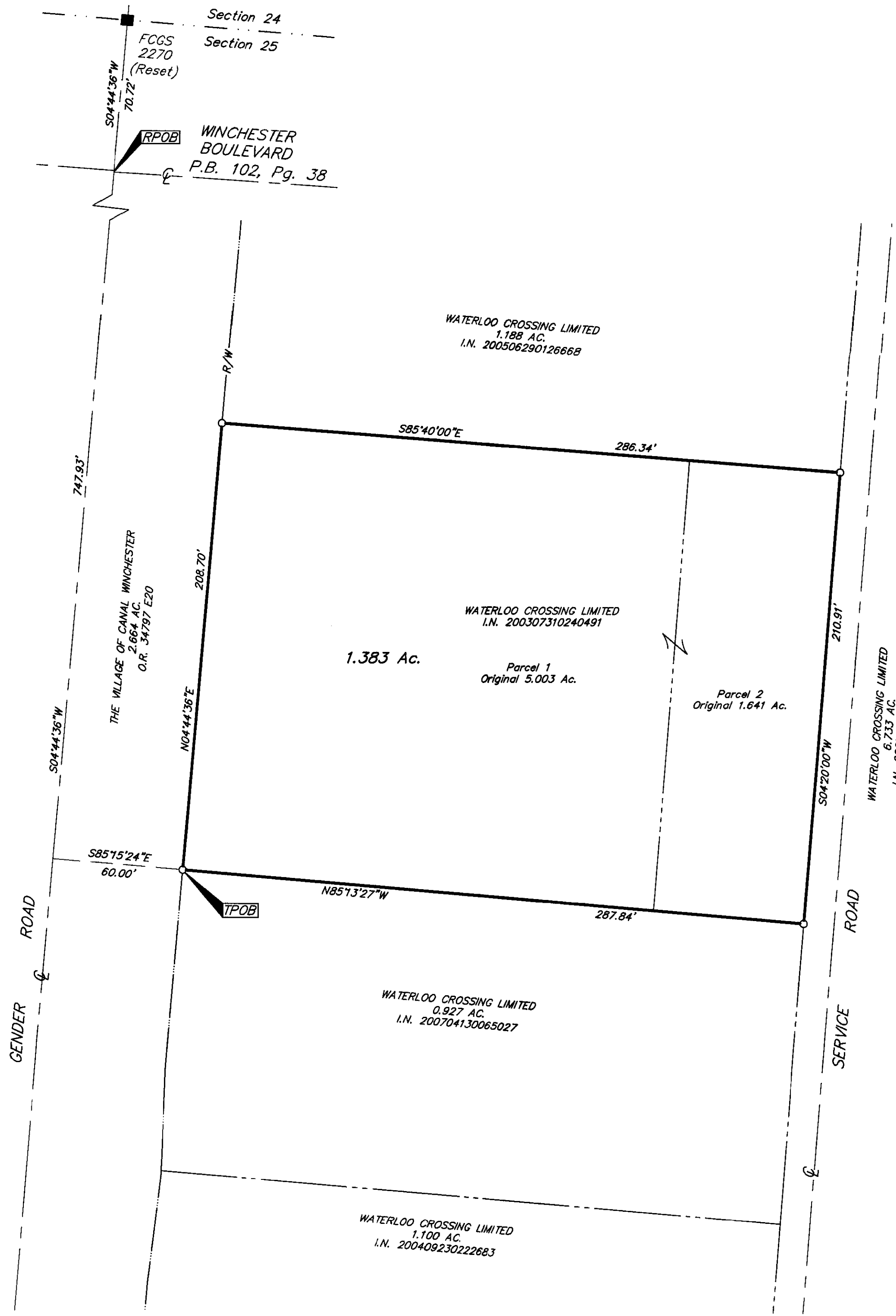


SURVEY OF ACREAGE PARCEL
SECTION 25, TOWNSHIP 11, RANGE 21
CONGRESS LANDS EAST OF SCIOTO RIVER
VILLAGE OF CANAL WINCHESTER, FRANKLIN COUNTY, OHIO

RECEIVED

Franklin County Engineer
 Dean C. Ringie, P.E., P.S.



By *Heather L. King* 10/26/10
 Professional Surveyor No. 83307



- = STONE FND.
 - = MON. FND.
 - = I.P. FND.
 - = I.P. SET
 - = MAG. NAIL FND.
 - = MAG. NAIL SET
 - ▲ = R.R. SPK. FND.
 - △ = R.R. SPK. SET
 - = P.K. NAIL FND.
- I.P. Set are 13/16" I.D. iron pipe with cap inscribed EMHT INC

BASIS OF BEARINGS:
 Bearings are based on the Ohio State Plane Coordinate System South Zone per NAD83 (1986 adjustment). Control for bearings was from coordinates of monuments FCGS 2270 (Reset) & FCGS 4452, having a bearing of North 04° 44' 36" East, as established by the Franklin County Engineering Department.

EMHT Evans, Mechwart, Hambleton & Tilton, Inc. Engineers • Surveyors • Planners • Scientists 5500 New Albany Road, Columbus, OH 43054 Phone: 614.775.4500 Fax: 614.775.4800		Date: October 25, 2010
		Scale: 1" = 40'
		Job No: 2006-2281
		Sheet: 1 of 1
REVISIONS		
MARK	DATE	DESCRIPTION

\\CMHDATA01\PROJECT01\20062281\20062281BNDY\DWG\20062281BNDY.DWG<18X24 PORTRAIT> - NO XREFS - LAST SAVED BY JMASTON [10/26/2010 12:33:35 PM] - PLOTTED BY JMASTON [10/26/2010 12:48:43 PM]