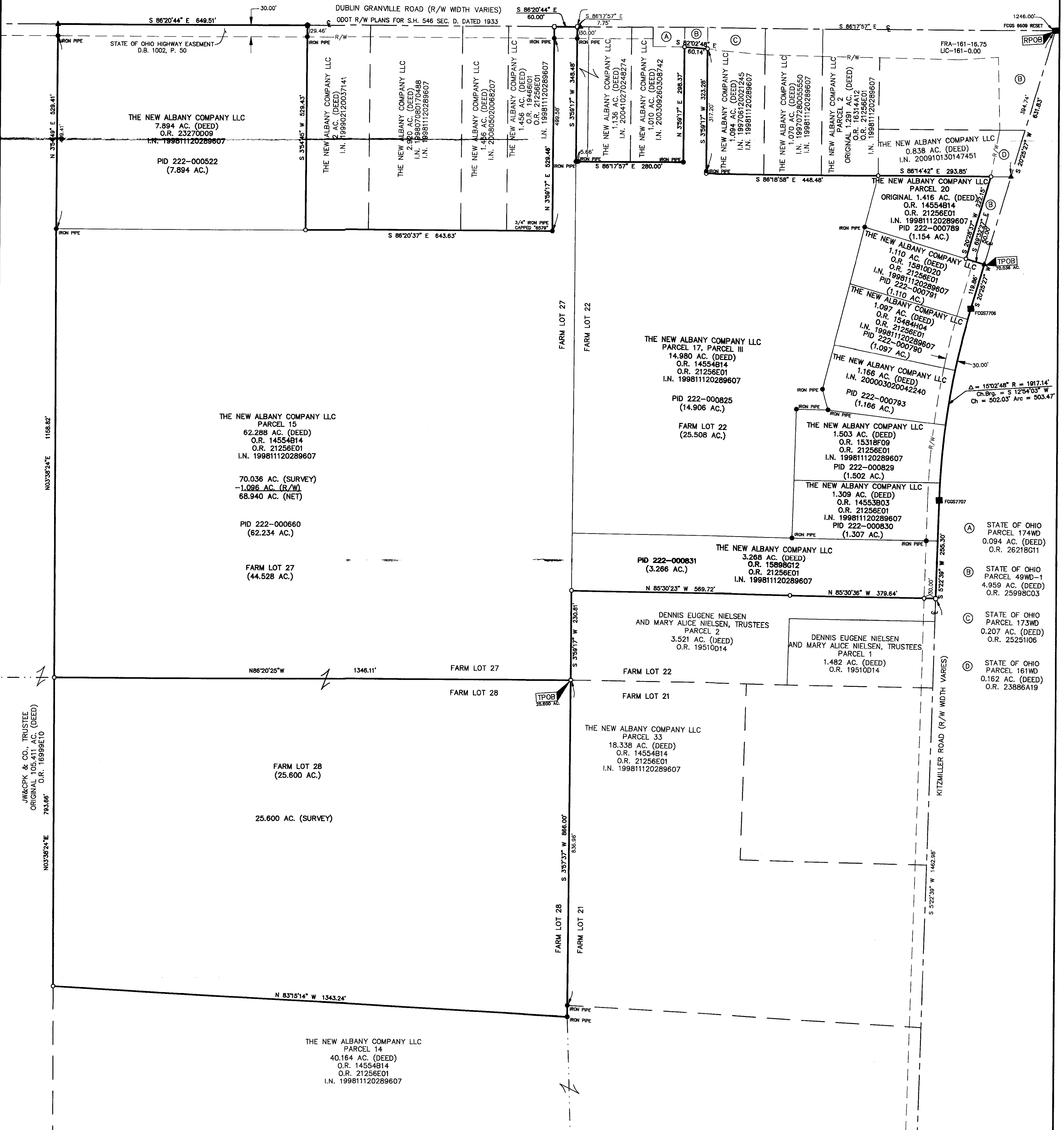


# SURVEY OF ACREAGE TRACT

## FARM LOTS 22, 27 AND 28, QUARTER TOWNSHIP 4, TOWNSHIP 2, RANGE 16

### UNITED STATES MILITARY LANDS

### VILLAGE OF NEW ALBANY, COUNTY OF FRANKLIN, STATE OF OHIO



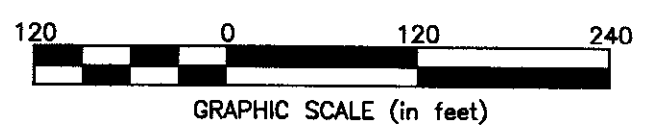
JW&CPK & CO., TRUSTEE  
ORIGINAL 105.411 AC. (DEED)  
O.R. 16999E10  
783.86'

N03°38'24"E  
783.86'

- = STONE FND.
  - = MON. FND.
  - = I.P. FND.
  - = I.P. SET
  - = MAC. NAIL FND.
  - = MAC. NAIL SET
  - △ = R.R. SPK. FND.
  - △ = R.R. SPK. SET
  - = P.K. NAIL FND.
- I.P. Set are 13/16" I.D. iron pipe with cap inscribed EMHT INC

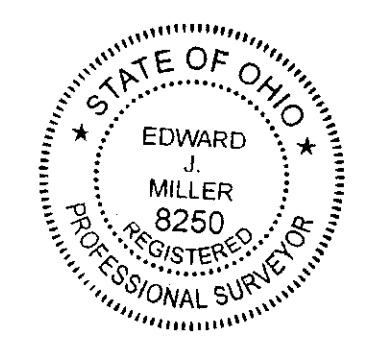
**BASIS OF BEARINGS:**  
Bearings are based on the Ohio State Plane Coordinate System as per NAD 83 (South Zone, 1986 adjustment). Control for bearings was from coordinates of monuments 6609 Reset and 7706, with a bearing of North 86° 20' 44" West for a portion of the centerline of Dublin Granville Road, established by the Franklin County Engineering Department, using Global Positioning System procedures and equipment.

**SURVEY NOTE:**  
This survey was prepared using documents of record, prior plats of survey, and observed evidence located by an actual field survey.



**RECEIVED**

Franklin County Engineer  
Dean C. Ringle, P.E., P.S.



By *Edward J. Miller*  
Professional Surveyor No. 8250

Date: September 29, 2010	
Scale: 1" = 120'	
Job No: 2010-1216	
Sheet: 1 of 1	
REVISIONS	
MARK	DATE DESCRIPTION