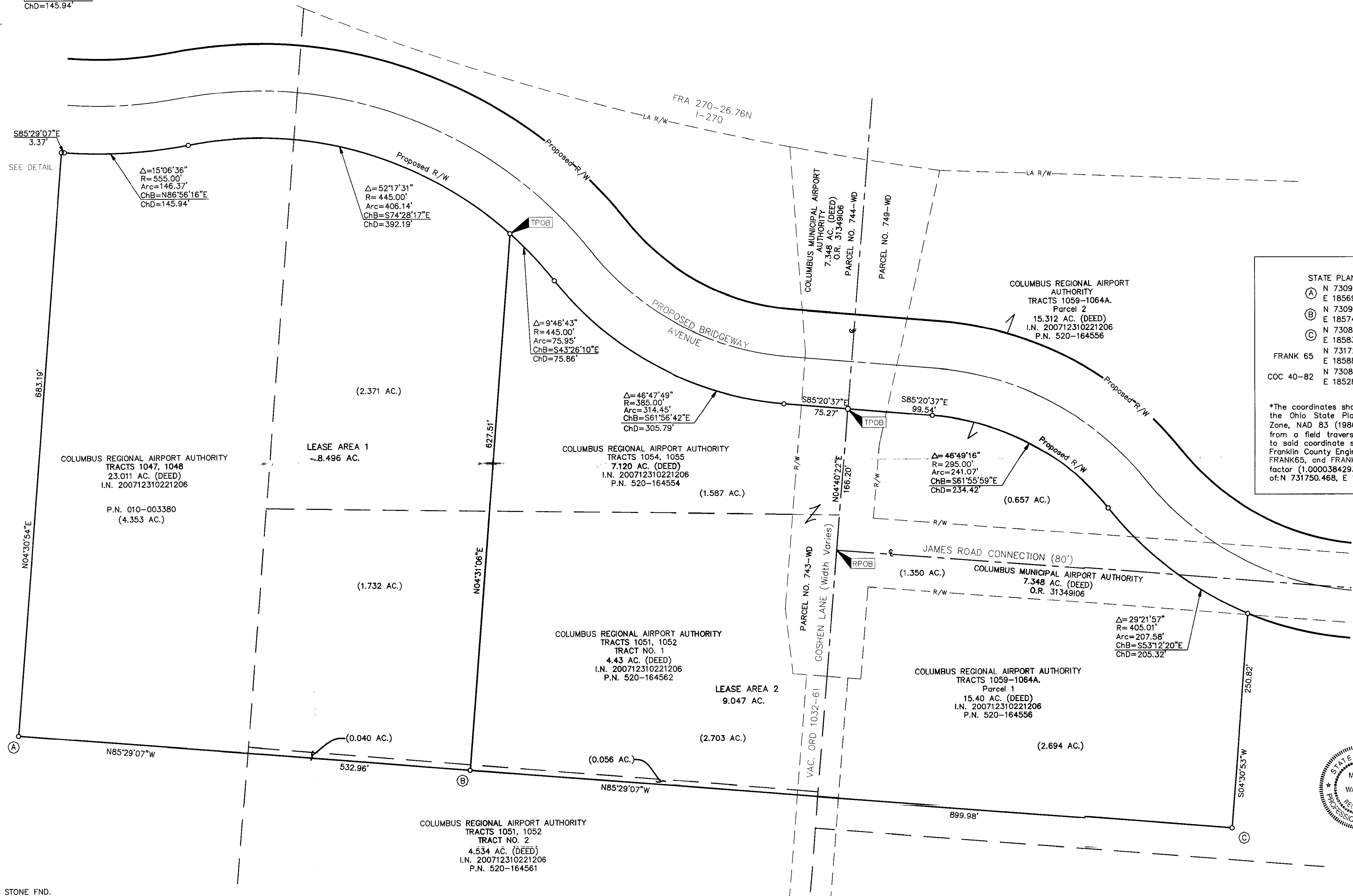
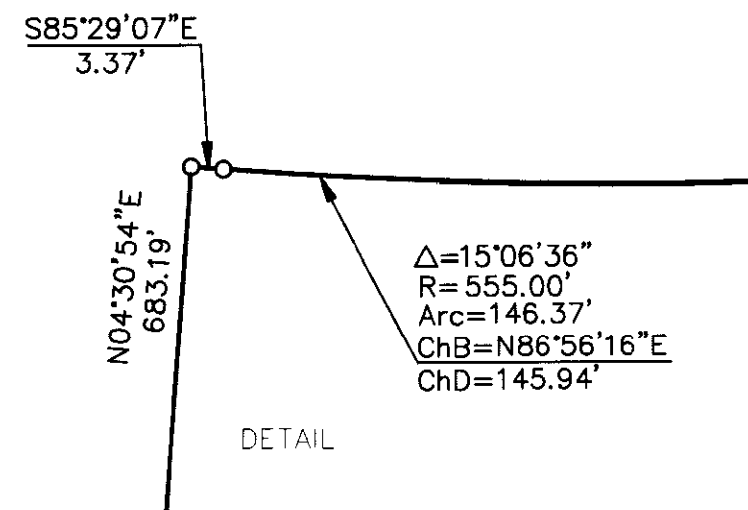


# LEASE EXHIBIT

QUARTER TOWNSHIP 4, TOWNSHIP 1, RANGE 17  
UNITED STATES MILITARY LANDS  
CITY OF COLUMBUS, COUNTY OF FRANKLIN, STATE OF OHIO



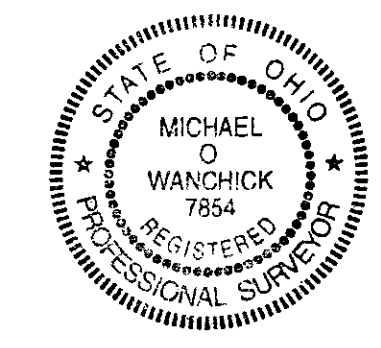
STATE PLANE COORDINATES (GROUND)*		PCIA LOCAL COORDINATES	
(A)	N 730966.8391 E 1856963.4824	(A)	N 8092.4282 E 5019.7637
(B)	N 730924.8867 E 1857494.7906	(B)	N 8091.8584 E 5552.7253
(C)	N 730854.0444 E 1858391.9772	(C)	N 8090.8961 E 6452.7039
FRANK 65	N 731729.451 E 1858861.411	FRANK 65	N 9000.0857 E 6852.7277
COC 40-82	N 730850.320 E 1852899.693	COC 40-82	N 7660.7152 E 977.3132

\*The coordinates shown on this map are based on the Ohio State Plane Coordinate System, South Zone, NAD 83 (1986). Said coordinates originated from a field traverse which was tied (referenced) to said coordinate system by GPS observations of Franklin County Engineering Department monuments FRANK65, and FRANK165. The grid to ground scale factor (1.0000384293) was applied at the location of: N 731750.468, E 1857130.533.

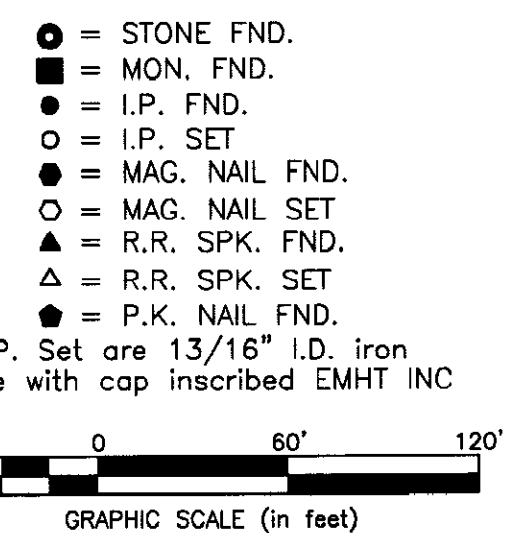
**RECEIVED**

AUG 25 2010

Franklin County Engineer  
Dean C. Ringle, P.E., P.S.



By *Michael O. Wanchick* 8/24/10  
Professional Surveyor No. 7854 Date  
Michael O. Wanchick



**BASIS OF BEARINGS:**  
The bearings shown on this plat are based on the Ohio State Plane Coordinate System, South Zone, NAD83 (1986). Said bearings originated from a field traverse which was tied (referenced) to said coordinate system by GPS observations and observations of selected Franklin County monuments FRANK 65 and FRANK 165. The portion of the right-of-way line of Johnstown Road, having a bearing of N 62° 01' 35" E is designated the "basis of bearing" for this survey.

**SURVEY NOTE:**  
Occupation, in general, fits survey.  
**SURVEY NOTE:**  
This Lease Exhibit was prepared using documents of record, prior plats of survey, and observed evidence located by an actual survey.

<b>EMHT</b> Evans, Mechwart, Hambleton & Tilton, Inc. Engineers • Surveyors • Planners • Scientists 5500 New Albany Road, Columbus, OH 43254 Phone: 614.775.4500 Fax: 614.775.3648 emht.com		Date: August 23, 2010 Scale: 1" = 60' Job No: 2010-0605 Sheet: 1 of 1
REVISIONS		
MARK	DATE	DESCRIPTION