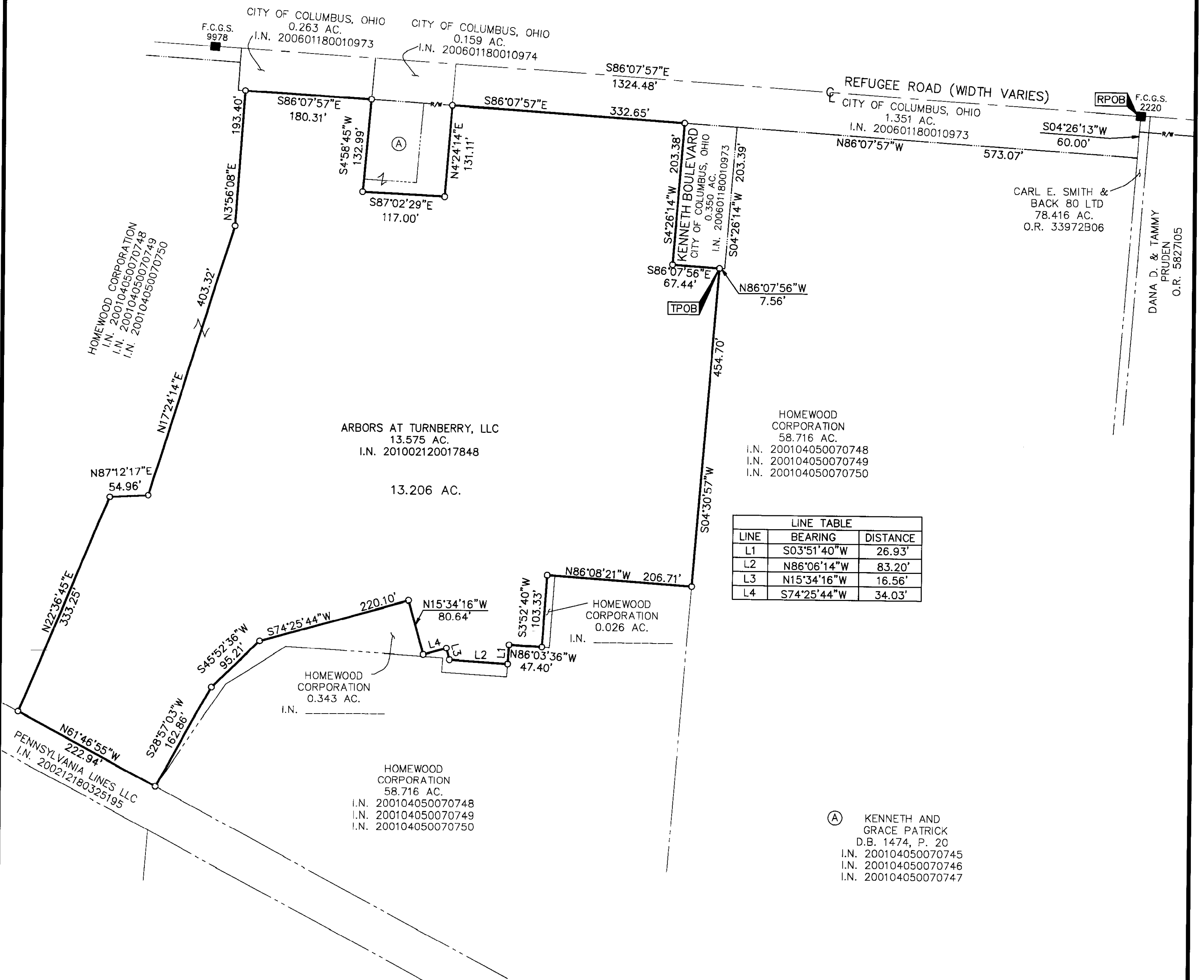


SURVEY OF ACREAGE PARCEL

SECTION 6, TOWNSHIP 15, RANGE 20

CONGRESS LANDS

CITY OF COLUMBUS, COUNTY OF FRANKLIN, STATE OF OHIO



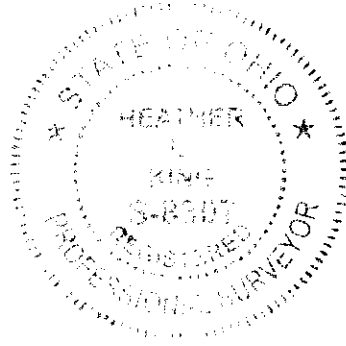
LINE	BEARING	DISTANCE
L1	S03°51'40\"W	26.93'
L2	N86°06'14\"W	83.20'
L3	N15°34'16\"W	16.56'
L4	S74°25'44\"W	34.03'

(A) KENNETH AND GRACE PATRICK
D.B. 1474, P. 20
I.N. 200104050070745
I.N. 200104050070746
I.N. 200104050070747

RECEIVED

JUN 29 2010

Franklin County Engineer
Dean C. Ringle, P.E., P.S.



By: *Heather King* 6/20/10
Professional Surveyor No. 8307

- = STONE FND.
 - = MON. FND.
 - = I.P. FND.
 - = I.P. SET
 - = MAG. NAIL FND.
 - = MAG. NAIL SET
 - ▲ = R.R. SPK. FND.
 - △ = R.R. SPK. SET
 - ◆ = P.K. NAIL FND.
- I.P. Set are 13/16" I.D. iron pipe with cap inscribed EMHT INC



GRAPHIC SCALE (IN FEET)

SURVEY NOTE:
This survey was prepared using documents of record, prior plats of survey, and observed evidence located by an actual field survey.

BASIS OF BEARINGS:
Bearings are based on the Ohio State Plane Coordinate System, South Zone, as per NAD83 (1986 Adjustment). Control for bearings was from coordinates of monuments FCGS 2220 and FCGS 9978, established by the Franklin County Engineering Department, using Global Positioning System procedures and equipment, and having a bearing of South 86° 07' 57" East for a portion of the centerline of Refugee Road.

<p>Evans, Mechwart, Hambleton & Tilton, Inc. Engineers • Surveyors • Planners • Scientists 5500 New Albany Road, Columbus, OH 43054 Phone: 614.775.4500 Toll Free: 888.775.3648 emht.com</p>	Date: June 18, 2010	
	Scale: 1" = 100'	
	Job No: 2009-1588	
	Sheet: 1 of 1	
REVISIONS		
MARK	DATE	DESCRIPTION

J:\2009\1588\20091588S\DWG\20091588BNDY4.DWG plotted by KING, HEATHER on 6/23/2010 8:33:44 AM last saved by TBAXTER on 6/23/2010 1:59:12 PM