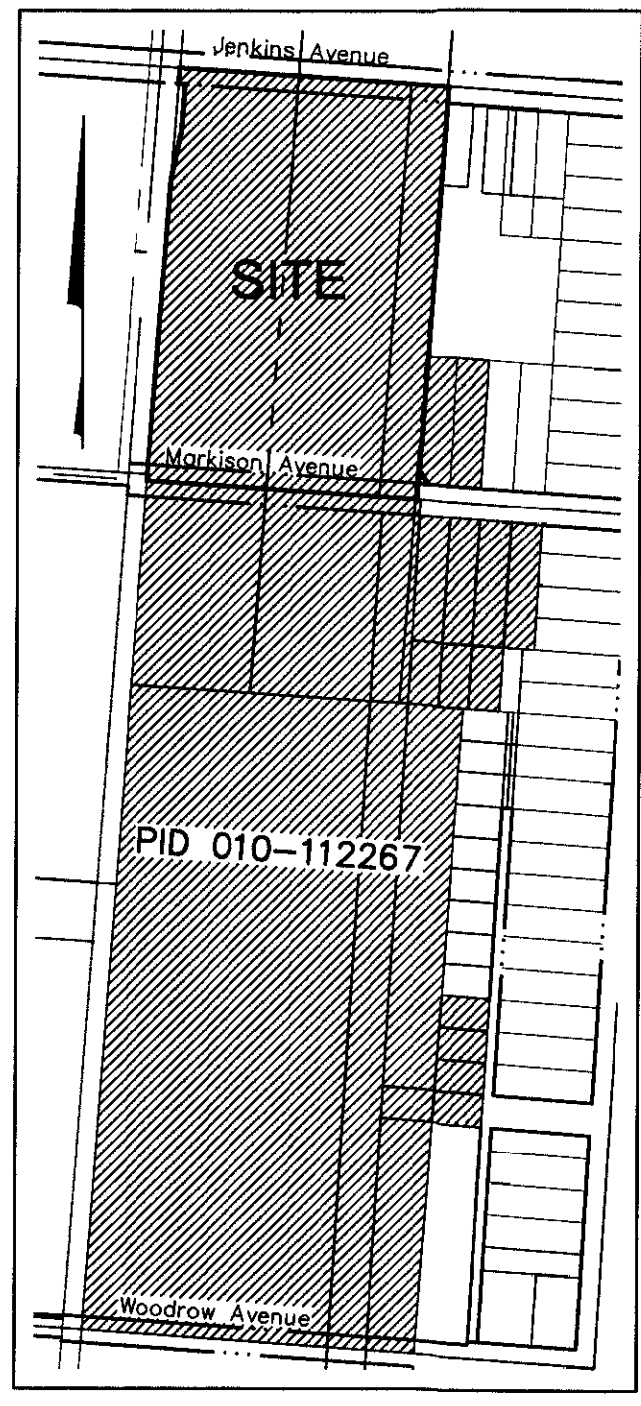
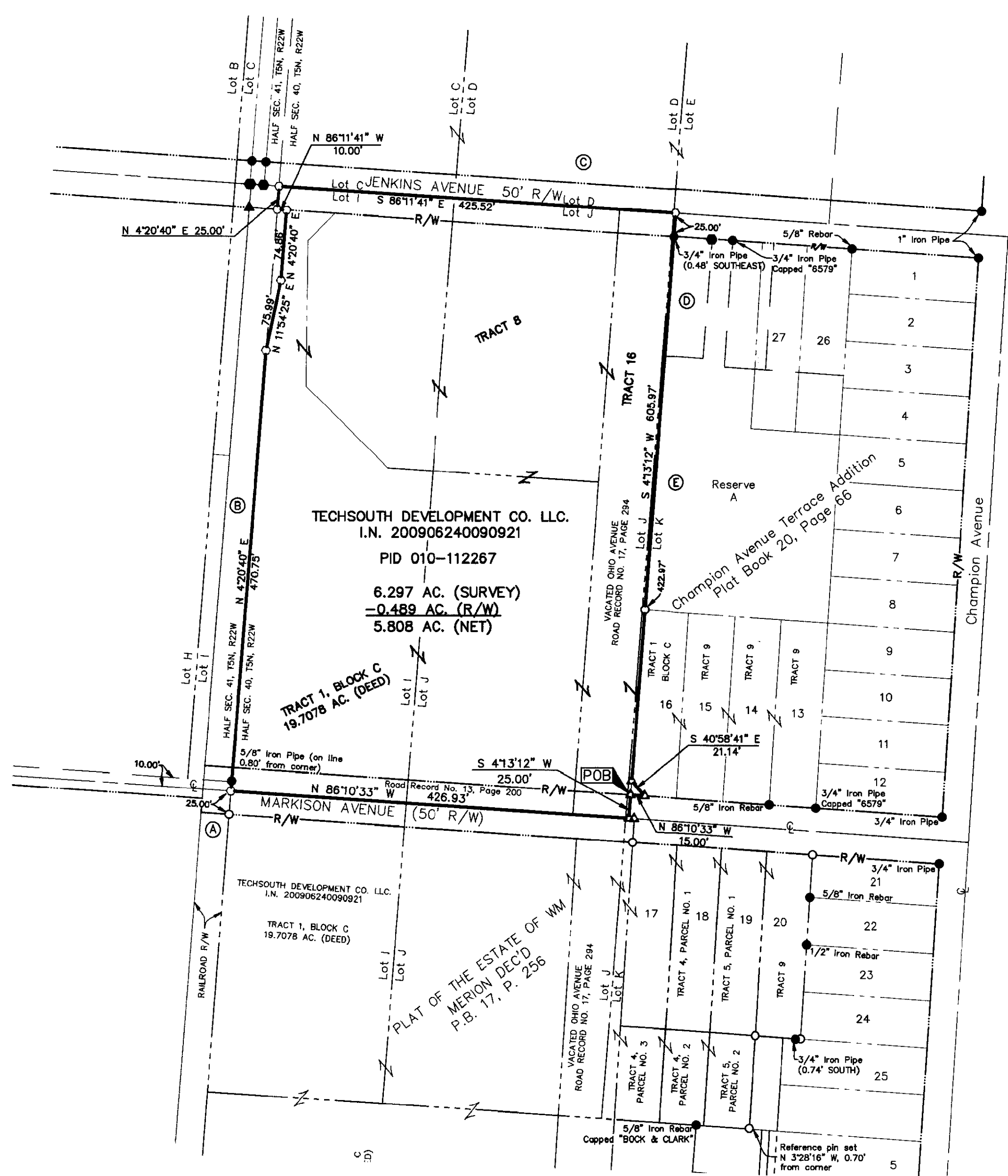


# SURVEY OF ACREAGE TRACT

## HALF SECTION 40, TOWNSHIP 5, RANGE 22

### REFUGEE LANDS

### CITY OF COLUMBUS, COUNTY OF FRANKLIN, STATE OF OHIO



PARENT TRACT  
 [Shaded Area] = PID 010-112267  
 SCALE: 1" = 300'

TECHSOUTH DEVELOPMENT CO. LLC.  
 I.N. 200906240090921  
 PID 010-112267  
 6.297 AC. (SURVEY)  
 -0.489 AC. (R/W)  
 5.808 AC. (NET)

TRACT 1, BLOCK C  
 19.7078 AC. (DEED)

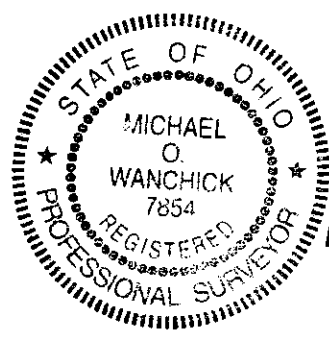
TECHSOUTH DEVELOPMENT CO. LLC.  
 I.N. 200906240090921  
 TRACT 1, BLOCK C  
 19.7078 AC. (DEED)

PLAT OF THE ESTATE OF WM  
 MERION DEC'D  
 P.B. 17, P. 256

- (A) THE COLUMBUS PIPE & EQUIPMENT COMPANY  
6.559 (AC.) DEED  
D.B. 1057 P. 603
- (B) TECHSOUTH DEVELOPMENT CO. LLC.  
0.831 AC. (DEED)  
I.N. 201008250109354
- (C) DEVELOPERS SEVEN LLC  
I.N. 200406150138168
- (D) NUUANNA DELONG  
0.121 AC. (DEED)  
I.N. 200003020042545  
OR 29592 D19
- (E) IACOVETTA HOLDINGS, LLC.  
1.258 AC. (DEED)  
200007310150976

**RECEIVED**

Franklin County Engineer  
 Dean C. Ringle, P.E., P.S.



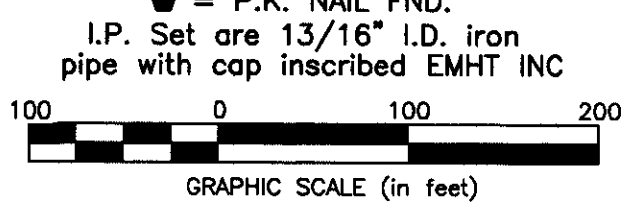
By Michael O. Wanchick 9/17/10  
 Michael O. Wanchick Date  
 Professional Surveyor No. 7854

**SURVEY NOTE:**  
 Occupation in general fits survey.

**SURVEY NOTE:**  
 This survey was prepared from documents of record and an actual field survey performed in August 2010.

**BASIS OF BEARINGS:**  
 The bearings are based on the Ohio State Plane Coordinate System, South Zone, NAD83 (1986). Said bearings originated from a field traverse which was tied (referenced) to said coordinate system by GPS observations and observations of selected Franklin County Engineering Department monuments Frank 43 and Frank 143. The portion of the right-of-way line of Markison Avenue, having a bearing of North 86° 10' 33" West, is designated the "basis of bearing" for this survey.

- = STONE FND.
- = MON. FND.
- = I.P. FND.
- = I.P. SET
- = MAG. NAIL FND.
- = MAG. NAIL SET
- ▲ = R.R. SPK. FND.
- △ = R.R. SPK. SET
- = P.K. NAIL FND.



<p style="font-size: 8px;">Evans, Mechwart, Hambleton &amp; Tilton, Inc.          Engineers • Surveyors • Planners • Scientists          5500 New Albany Road, Columbus, OH 43054          Phone: 614.775.4500 Toll Free: 888.775.3648          emht.com</p>	Date: September 17, 2010	
	Scale: 1" = 100	
	Job No: 2010-1061	
	Sheet: 1 of 1	
REVISIONS		
MARK	DATE	DESCRIPTION