



Evans, Mechwart, Hambleton & Tilton, Inc.  
 Engineers • Surveyors • Planners • Scientists  
 5500 New Albany Road, Columbus, OH 43054  
 Phone: 614.775.4500 Toll Free: 888.775.3648  
 emht.com

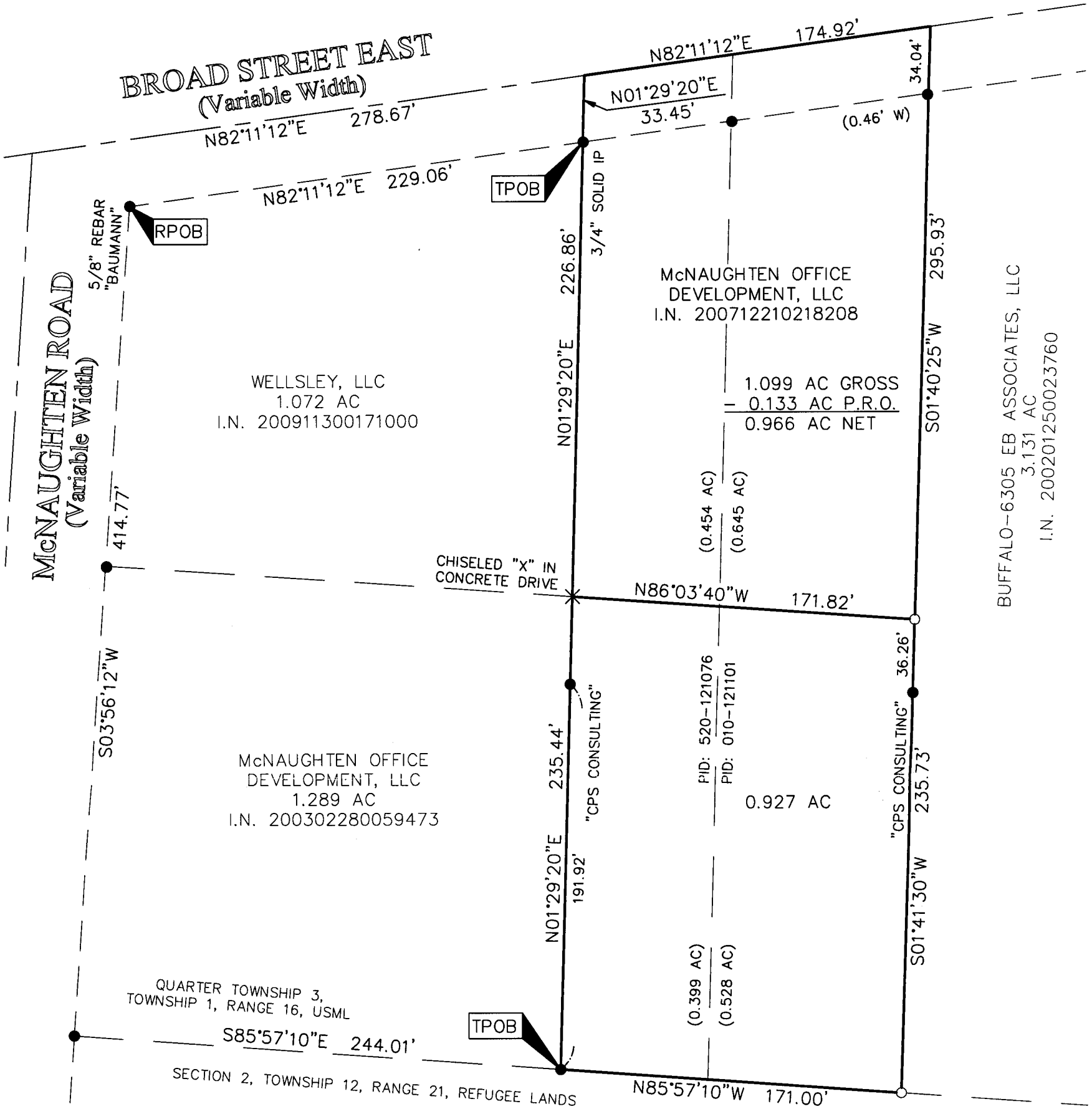
# SURVEY OF ACREAGE PARCEL

QUARTER TOWNSHIP 3, TOWNSHIP 1, RANGE 16  
 UNITED STATES MILITARY LANDS  
 CITY OF COLUMBUS, COUNTY OF FRANKLIN, STATE OF OHIO

Date: September 27, 2010

Job No. 2010-0972

Scale: 1" = 60'



**BASIS OF BEARINGS:**

The Bearings shown hereon are based on the Ohio State Plane Coordinate System South Zone as per NAD83 (1986 Adjustment). Control for bearings was derived using the bearing of North 82° 21' 49" East for a portion of the centerline of East Broad Street as established from a series of GPS observations in October 2003.

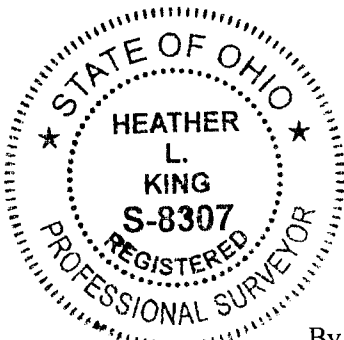
MCNAUGHTEN COMMONS CONDOMINIUMS  
 C.P.B. 30, PP. 47-72

**SURVEY NOTE:**

This survey was prepared using documents of record, prior plats of survey, and observed evidence located by an actual field survey.

- = STONE FND.
- = MON. FND.
- = 3/4" I.P. FND.
- = I.P. SET
- = MAG. NAIL FND.
- = MAG. NAIL SET
- ▲ = R.R. SPK. FND.
- △ = R.R. SPK. SET
- ◆ = P.K. NAIL FND.

I.P. Set are 13/16" I.D. iron pipe with cap inscribed EMHT INC



**RECEIVED**

SEP 30 2010

Franklin County Engineer  
 Dean C. Ringle, P.E., P.S.



GRAPHIC SCALE (in feet)

By *Heather L. King*  
 Heather L. King  
 Professional Surveyor No. 8307

9/29/10  
 Date

J:\20100972\20100972SV\DWG\20100972BNDY.DWG plotted by KING, HEATHER on 9/29/2010 4:46:29 PM last saved by KING on 9/29/2010 4:46:20 PM