

F-2-E



Evans, Mechwart, Hambleton & Tilton, Inc.
Engineers • Surveyors • Planners • Scientists
5500 New Albany Road, Columbus, OH 43054
Phone: 614.775.4500 Toll Free: 888.775.3648
emht.com

VACATION OF RIGHT-OF-WAY

QUARTER TOWNSHIP 2, TOWNSHIP 1, RANGE 18
UNITED STATES MILITARY LANDS
CITY OF COLUMBUS, COUNTY OF FRANKLIN, STATE OF OHIO

Date: August 30, 2010
Scale: 1" = 40'
Job No. 20091375

SURVEY NOTE:
This survey was prepared using documents of record, prior plats of survey, and observed evidence located by an actual field survey.

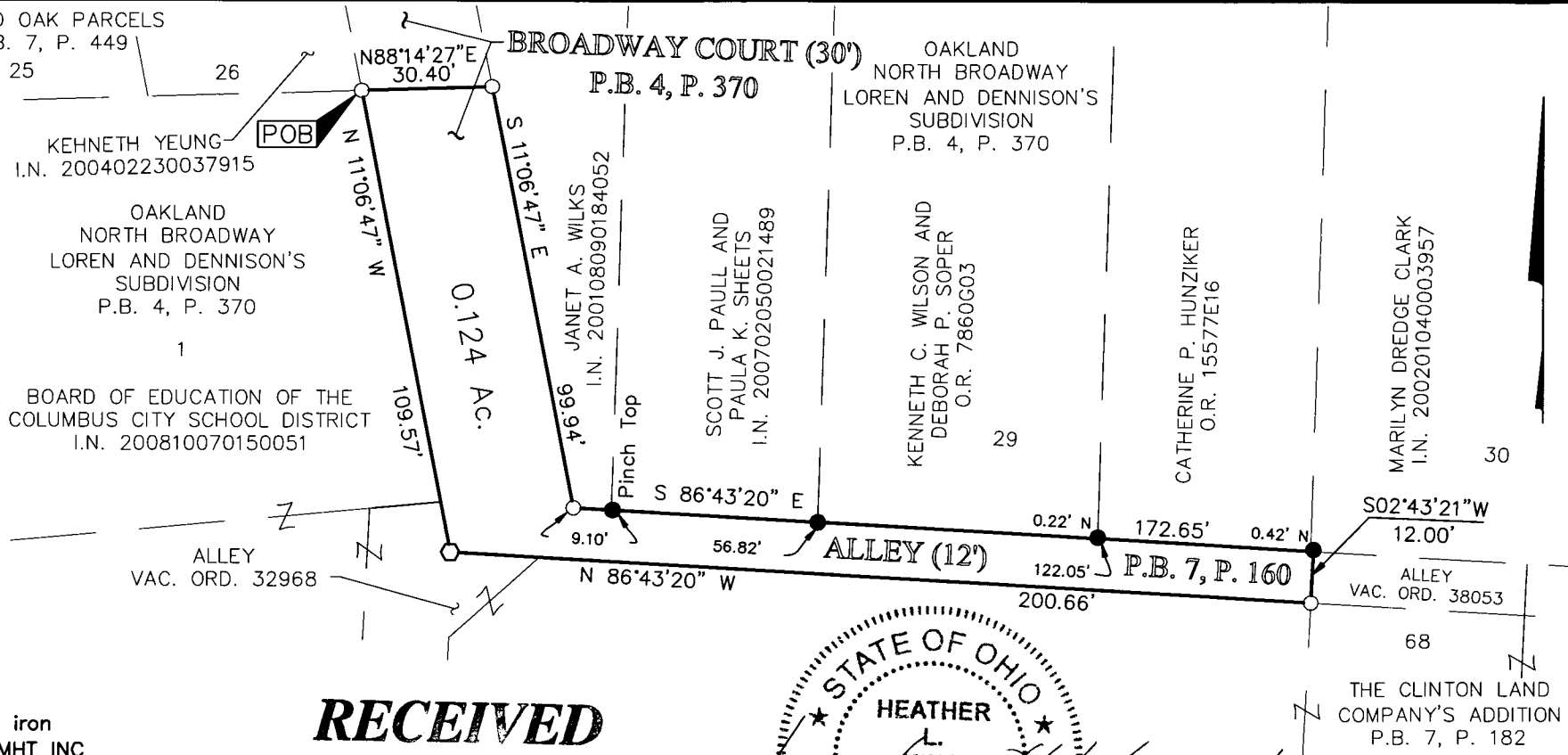
BASIS OF BEARINGS:
The Bearings shown hereon are based on the Ohio State Plane Coordinate System (South Zone) as per NAD83 (1986 Adjustment). Control for bearings was from coordinates of monuments FRANK143 and FRANK43, with the south right-of-way of East North Broadway having a bearing of North 88° 14' 44" West.

- = 3/4" I.P. FND.
- = I.P. SET
- ◊ = MAG. NAIL SET

I.P. Set are 13/16" I.D. iron pipe with cap inscribed EMHT INC



GRAPHIC SCALE (in feet)



RECEIVED

SEP 20 2010

Franklin County Engineer
Dean C. Rindle, P.E., P.S.

By *Heather L. King*
 Heather L. King
 Professional Surveyor No. 5307

Date: 9/17/10

J:\20091375\20091375SV\DWG\20091375BV.DWG plotted by KING, HEATHER on 9/19/2010 5:06:54 PM Plot: saved by KING on 9/19/2010 5:06:38 PM Xrefs: