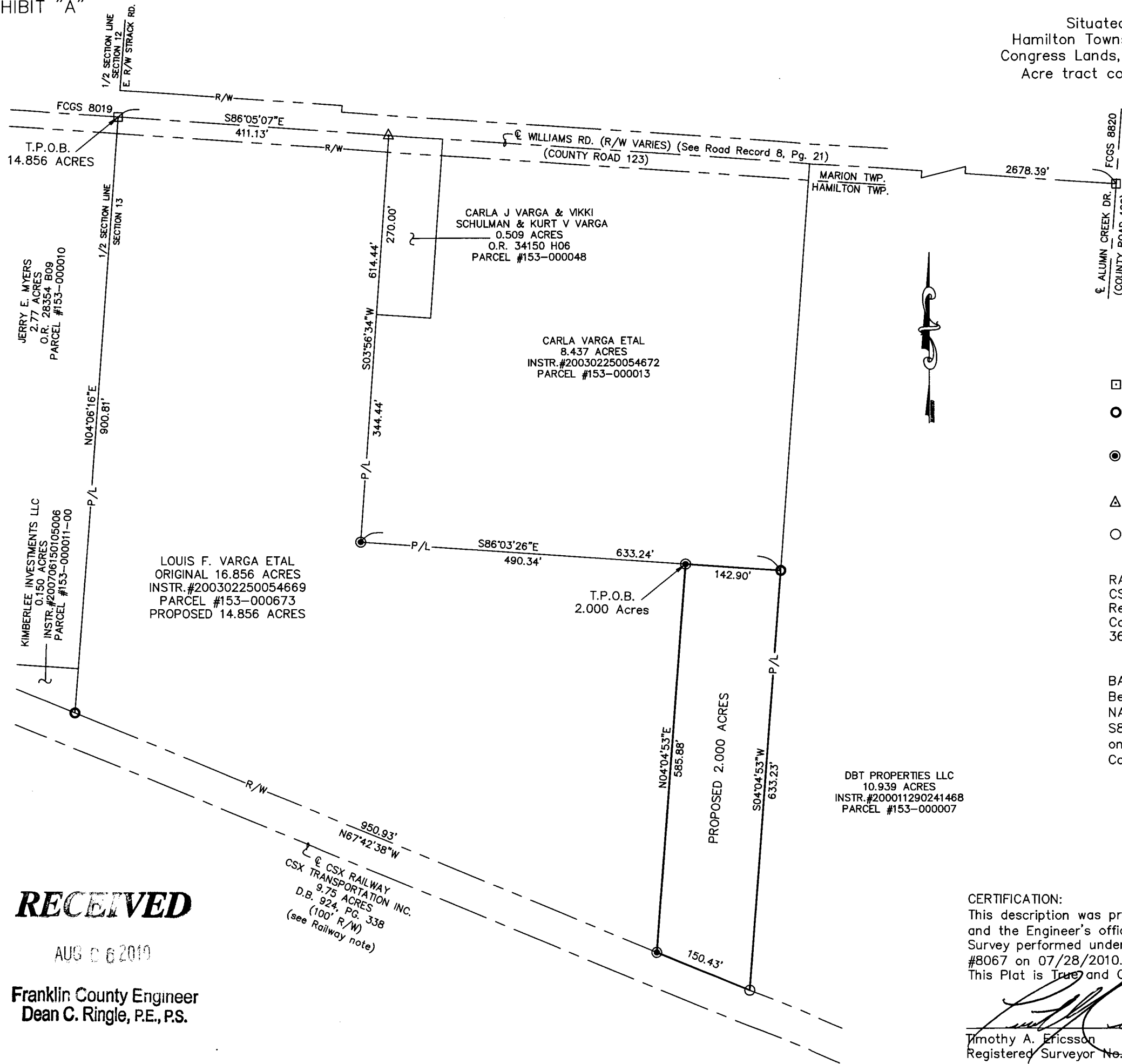


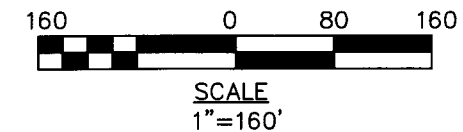
PLAT OF SURVEY
 Situated in the State of Ohio, County of Franklin, Village of Obetz,
 Hamilton Township, Part of the N.E. Quarter of Section 13, Twp. 4N, Range 22W,
 Congress Lands, and being 14.856 Acres and 2.000 Acres out of an original 16.856
 Acre tract conveyed to LOUIS F. VARGA ETAL (Parcel #153-000673), shown in
 Instr. #200302250054669.



- FRANKLIN COUNTY MONUMENT BOX
- CAPPED I.P. FOUND STAMPED (HAINES SURVEYING)
- ⊙ 5/8" REBAR 30" LONG SET WITH A RED CAP STAMPED (8067)
- △ P.K. NAIL (SET)
- 3/4" I.P. (IRON PIPE FOUND)

RAILWAY NOTE:
 CSX Transportation Inc. successor by merger of the Chesapeake Railway as Recorded in O.R. 13276 A14 as conveyed to the Hocking Valley Railway Company in D.B. 924, Pg. 338 as originally partitioned in D.B. 467, Pg. 363 and by the Franklin County Probate Court as filed in BK 5, Pg. 481.

BASIS OF BEARING:
 Bearings are based on the Ohio State Plane coordinate system (S. zone) NAD 83 (1986 adjustment), based on the center of Williams Rd. as being S86°05'07"E between Franklin County Monument's 8819 and 8820 as shown on a Centerline Survey Plat (Drawing #0123-04), created by the Franklin County Engineer's Office dated 12/02/1999.



RECEIVED

AUG 06 2010

Franklin County Engineer
 Dean C. Ringle, P.E., P.S.

CSX RAILWAY
 CSX TRANSPORTATION INC.
 9.75 ACRES
 D.B. 924, PG. 338
 (100' R/W)
 (see Railway note)

CERTIFICATION:
 This description was prepared from records on file at the Recorder's Office, and the Engineer's office, Franklin County, Ohio and from an actual Field Survey performed under the direct supervision of Timothy A. Ericsson, P.S. #8067 on 07/28/2010.
 This Plat is True and Correct to the best of my knowledge.

Timothy A. Ericsson
 Timothy A. Ericsson
 Registered Surveyor No. 8067

08/04/2010



G-9-F, K-7-D