

18.025 ACRE LOT SPLIT
 PART OF A 30.4797 ACRE TRACT
 PART OF LOT 8 OF THE PARTITION OF THOMAS GRAY
 SECTION 4, TOWNSHIP 11, RANGE 21
 CONGRESS LANDS
 TOWNSHIP OF MADISON
 COUNTY OF FRANKLIN
 STATE OF OHIO

SCALE: 1"=100'

POINT OF REFERENCE

POINT OF BEGINNING

VRS NETWORK STATEMENT

THE BEARINGS SHOWN ON THIS PLAT ARE BASED ON THE OHIO STATE PLANE COORDINATE SYSTEM, SOUTH ZONE, NAD83 (CORS). SAID BEARINGS ORIGINATED FROM A FIELD TRAVERSE WHICH WAS REFERENCED TO SAID COORDINATE SYSTEM BY VRS GPS OBSERVATIONS AND OBSERVATIONS OF SELECTED STATIONS IN THE OHIO DEPARTMENT OF TRANSPORTATION VIRTUAL REFERENCE STATION NETWORK. THE PORTION OF THE CENTERLINE OF WINCHESTER PIKE, HAVING A BEARING OF SOUTH 56°43'43" EAST AND MONUMENTED AS SHOWN HEREON, IS DESIGNATED THE "BASIS OF BEARING" FOR THIS PLAT.

REFERENCE DOCUMENTS:

THE BOUNDARY SURVEY IS BASED ON COMPLETE RECORD 35, PAGE 363, VOLUME 12464, PAGE D07 AND VOLUME 34337, PAGE H06.

CW Design Group
 ENGINEERS | SURVEYORS

PHONE: 614-848-9279
 FAX: 614-848-9276

972 Linkfield Drive
 Worthington, Ohio 43085

HEREBY CERTIFY THIS PLAT WAS BASED FIELD SURVEY CONDUCTED BY CW DESIGN GROUP, LLC UNDER MY GUIDANCE IN JULY 2010 AND TO THE BEST OF MY KNOWLEDGE DEPICTS THE BOUNDARY LINES.

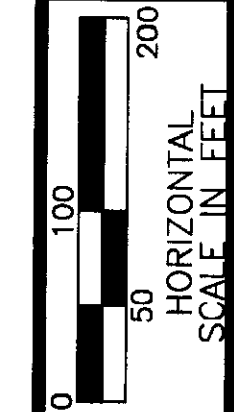
CHARLES A. WAGNER, PS-8091
 REGISTERED PROFESSIONAL SURVEYOR
 DATE: 2010.08.22
 CW DESIGN GROUP, LLC



RECEIVED

2010 AUG 24 2:59 PM

Franklin County Engineer
 Dean C. Ringler, P.E., P.S.

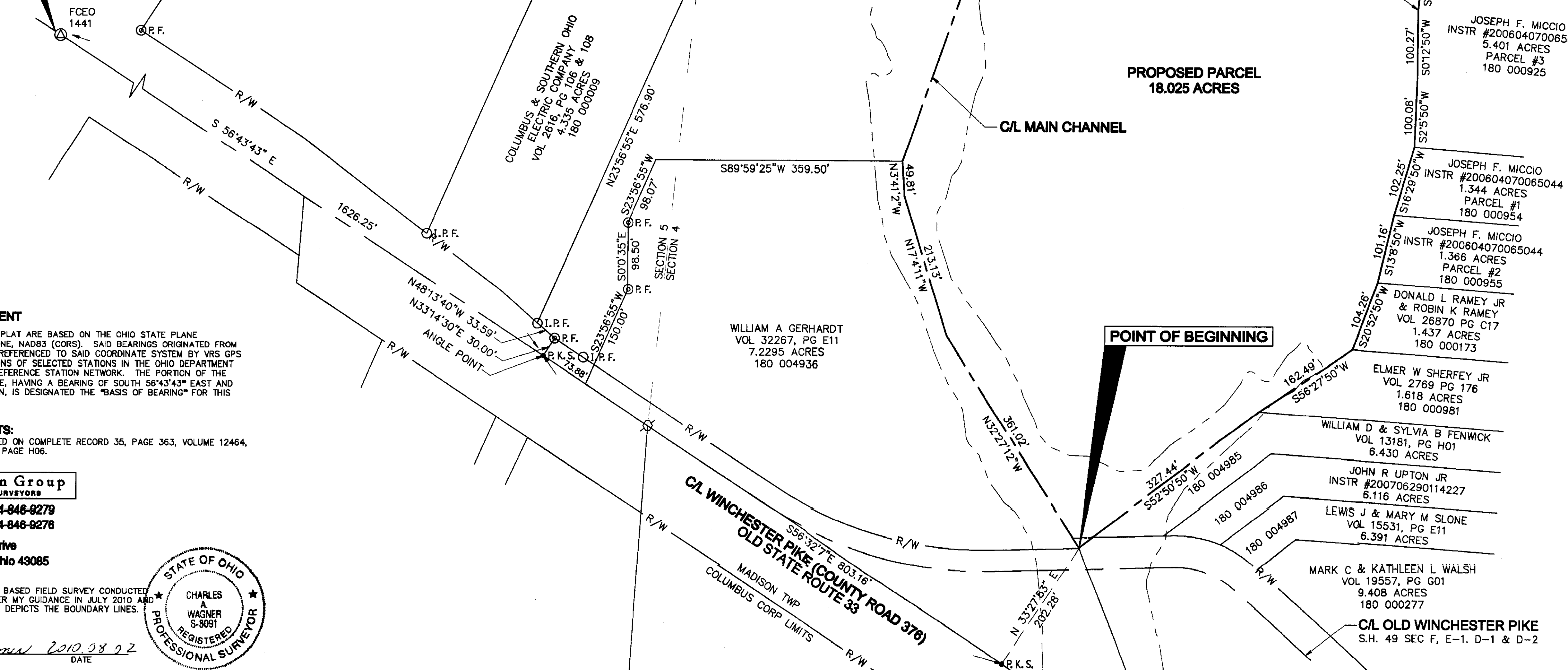


18.025 ACRE LOT SPLIT

GERHARDT PROPERTY

1/1

c:\cwg\Project\2010\100012\Drawing\1\Topo.dwg - August 02, 2010 @ 1:53pm



SYMBOL LEGEND

- I.P.F. IRON PIN FOUND
- ⊙ P.R.F. IRON PIPE FOUND
- ⊕ MONUMENT BOX
- P.K.S. PK NAIL SET
- ⊕ RAILROAD SPIKE FOUND
- I.P.S. IRON PIN SET, 5/8" DIAMETER BY 30" LONG REBAR WITH "CW DESIGN GROUP" CAP

ABBREVIATIONS

- INSTR - INSTRUMENT
- L/A - LIMITED ACCESS RIGHT OF WAY
- PG - PAGE
- R/W - RIGHT OF WAY
- VOL - VOL