

L-2-F

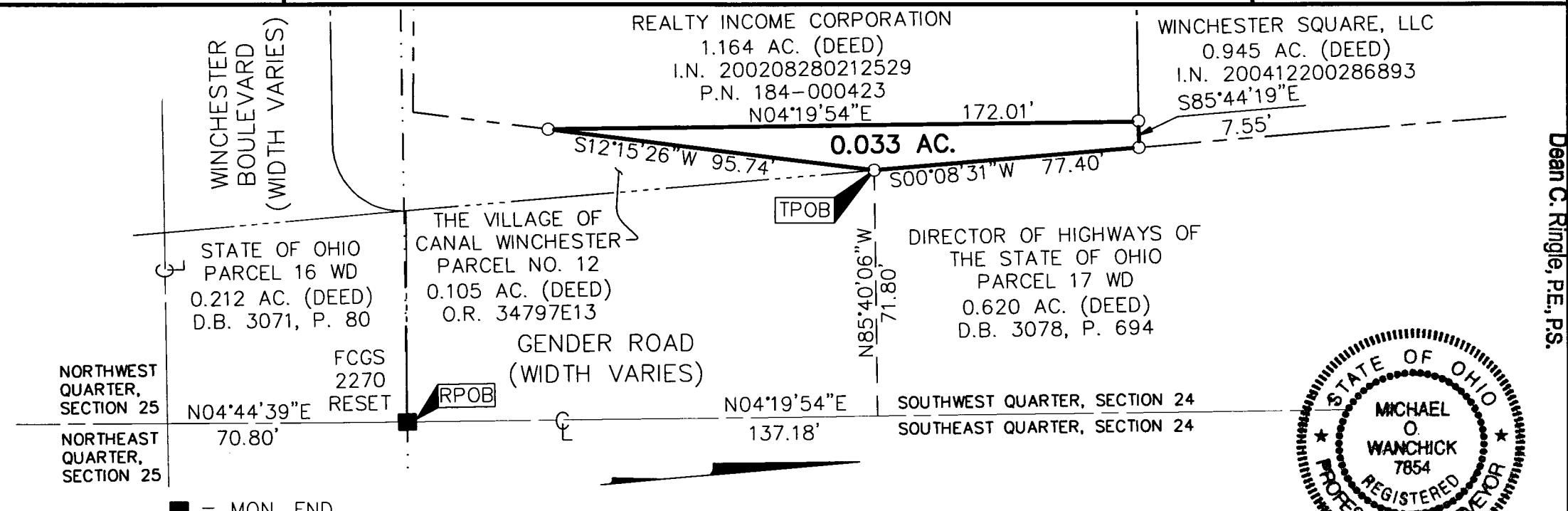


Evans, Mechwart, Hambleton & Tilton, Inc.  
Engineers • Surveyors • Planners • Scientists  
5500 New Albany Road, Columbus, OH 43054  
Phone: 614.775.4500 Toll Free: 888.775.3648  
emht.com

# SURVEY OF ACREAGE PARCEL

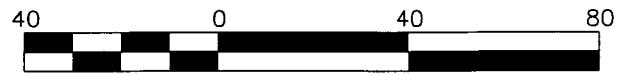
SOUTHWEST QUARTER, SECTION 24, TOWNSHIP 11, RANGE 21  
CONGRESS LANDS EAST OF THE SCIOTO  
VILLAGE OF CANAL WINCHESTER, COUNTY OF FRANKLIN, STATE OF OHIO

Date:	May 26, 2010
Job No.	2010-0300
Scale:	1" = 40'



■ = MON. FND.  
○ = I.P. SET

I.P. Set are 13/16" I.D. iron pipe with cap inscribed EMHT INC



GRAPHIC SCALE (in feet)

BASIS OF BEARINGS:  
The Bearings shown hereon are based on the Ohio State Plane Coordinate System, South Zone, as per NAD83 (1986 Adjustment). Control for bearings was from coordinates of monuments "CW1006" and "CW1010", having a bearing of North 05° 00' 26" East, as set by ADR and Associates, Ltd. for the Village of Canal Winchester.



By Michael O. Wanchick 5/28/10  
Professional Surveyor No. 7854 Date

Franklin County Engineer  
Dean C. Ringle, P.E., P.S.

JUN 0 1 2010

RECEIVED