



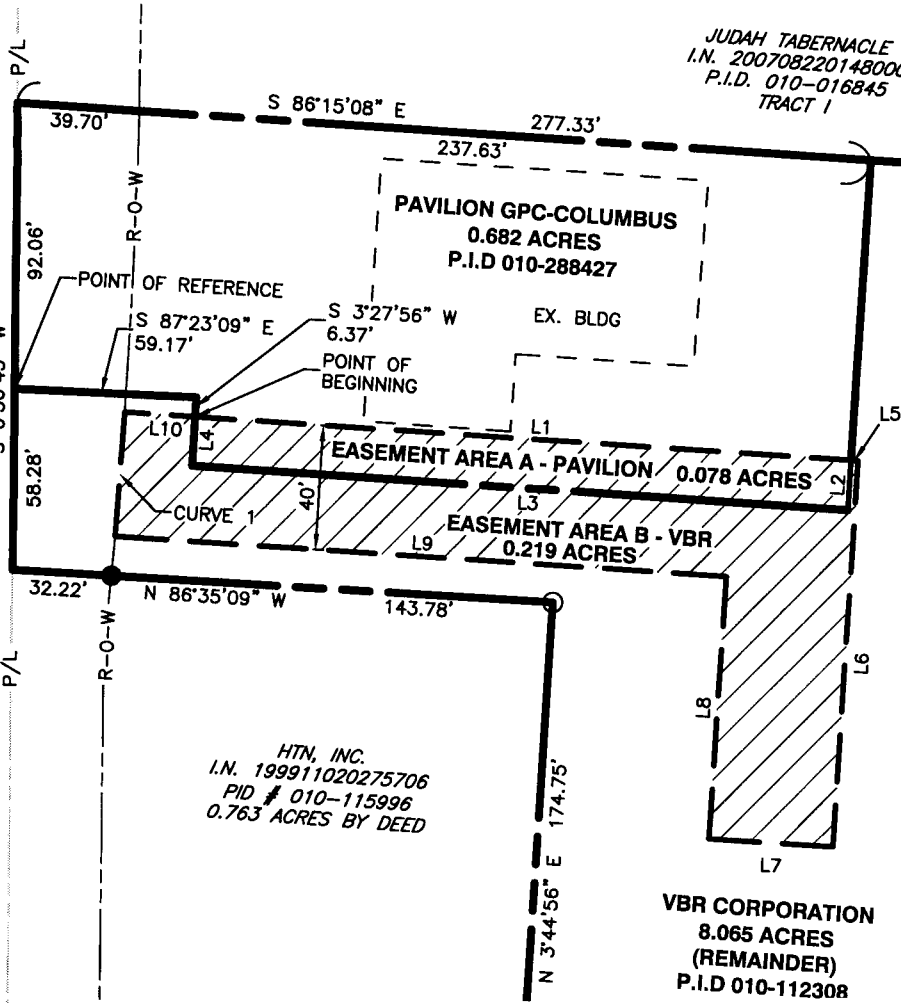
NORTH

SUBMITTAL & REVISION RECORD

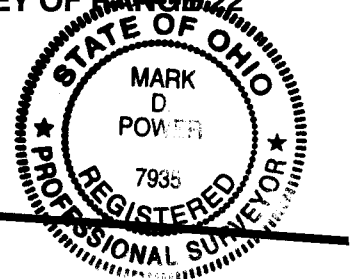
NO	DATE	DESCRIPTION

SITUATE IN THE STATE OF OHIO, COUNTY OF FRANKLIN, CITY OF COLUMBUS, SECTION 9, TOWNSHIP 4 NORTH, RANGE 22 WEST OF MATHEWS SURVEY OF RANGE 22

U.S. 23 ~ SOUTH HIGH STREET



JUDAH TABERNACLE
 I.N. 200708220148000
 P.I.D. 010-016845
 TRACT 1



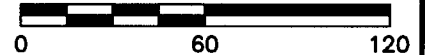
LINE	BEARING	DISTANCE
L1	S 86°17'40" E	213.16'
L2	S 3°42'49" W	16.06'
L3	N 86°11'14" W	213.09'
L4	N 3°27'56" E	15.66'
L5	S 86°17'40" E	2.32'
L6	S 3°42'20" W	124.51'
L7	N 86°17'40" W	40.00'
L8	N 3°42'20" E	84.51'
L9	N 86°17'40" W	198.98'
L10	S 86°17'40" E	22.95'

CURVE 1
 R-O-W CURVE DATA
 R=2331.83
 L=40.00
 CHD=40.00
 DELTA=0°58'59"
 CHB=N 04°29'59" E

HTN, INC.
 I.N. 199911020275706
 PID # 010-115996
 0.763 ACRES BY DEED

VBR CORPORATION
 8.065 ACRES
 (REMAINDER)
 P.I.D 010-112308

SCALE IN FEET



Civil & Environmental Consultants, Inc.

8740 Orion Place, Suite 100 - Columbus, OH 43240
 614-540-6633 · 888-598-6808
 www.cecinc.com

BASIS OF BEARINGS

FOR THE PURPOSE OF THIS SURVEY, A BEARING OF NORTH 86°21'49" WEST WAS MEASURED BETWEEN THE EXISTING REBAR FOUND AT THE NORTHWEST CORNER OF LOT 142 AND THE IRON PIN FOUND AT THE NORTHEAST CORNER OF LOT 139 OF HOME ACRES SUBDIVISION ACCORDING TO GPS MEASUREMENTS MADE ON APRIL 15, 2010.

THIS EASEMENT EXHIBIT IS BASED ON A FIELD SURVEY BY CIVIL & ENVIRONMENTAL CONSULTANTS, INC. IN APRIL 2010.

[Signature] 4/26/2010

CIVIL & ENVIRONMENTAL CONSULTANTS, INC.
 MARK D. POWER
 REGISTERED LAND SURVEYOR NO.: 7935

JUN 10 2010

Franklin County Engineer
 Dean C Ringle, P.E., P.S.

EASEMENT EXHIBIT

Situate In
 CITY OF COLUMBUS
 FRANKLIN COUNTY, OHIO
 Made For
 PAVILION GPC - COLUMBUS
 NAPA SITE
 SOUTH HIGH STREET

DATE: APRIL 23, 2010	SCALE: 1"=60'	DRAWING NO.:
DRAWN BY: MP	CHECKED BY: MP	EXH
PROJECT NO: 082-253	APPROVED BY: SD	SHEET NO 1 OF NO 1

P:\2008\082253 RECEIVED BY CIVIL & ENVIRONMENTAL CONSULTANTS, INC. PLAT.DWG(LAYOUT) (MPOWER) - APR 26, 2010 -- 13:28:52