

# SURVEY FOR CITY OF WESTERVILLE

## CITY OF WESTERVILLE, FRANKLIN COUNTY, OHIO

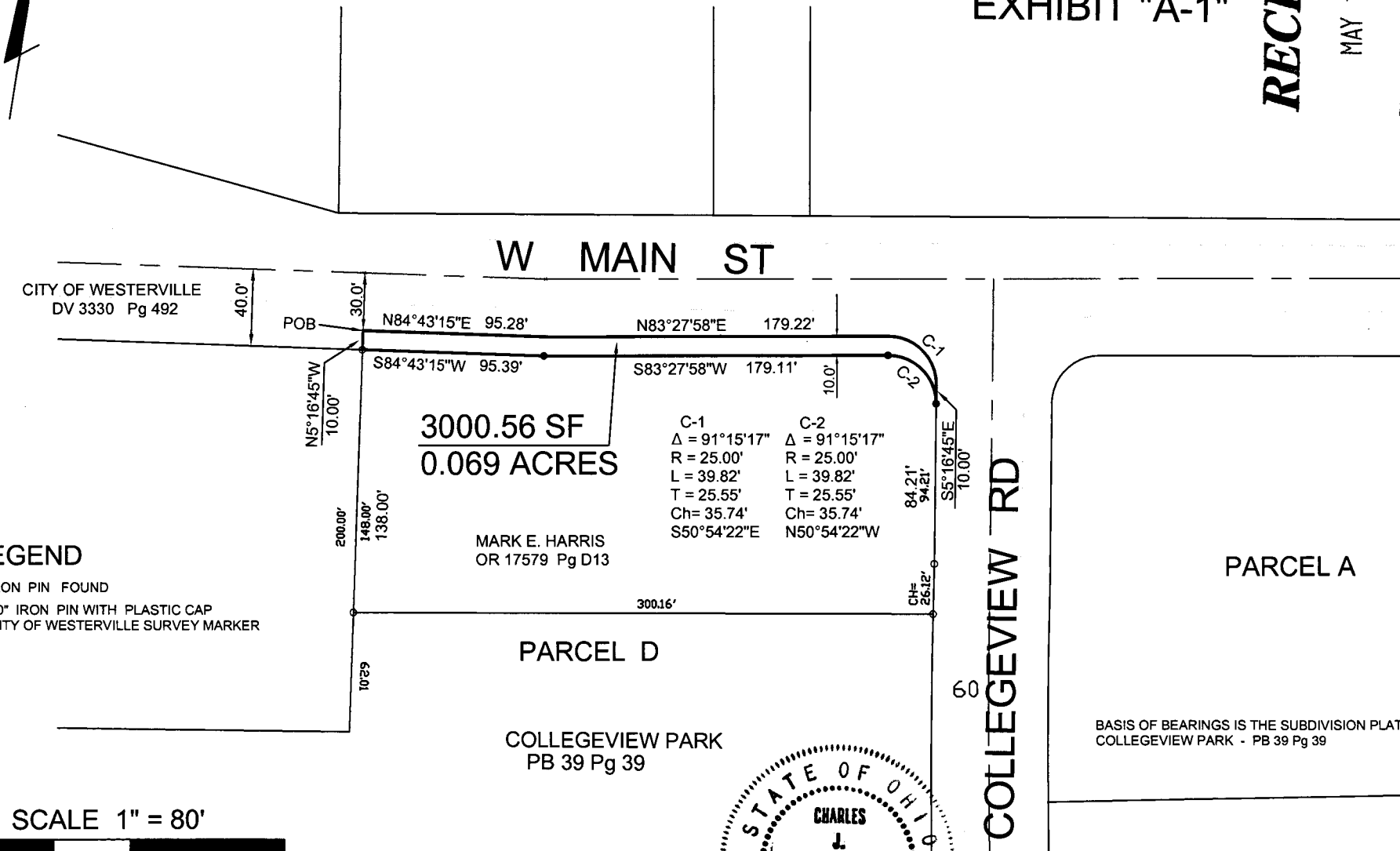
### PORTION OF PARCEL D - COLLEGEVIEW PARK PB 39 Pg 39

EXHIBIT "A-1"

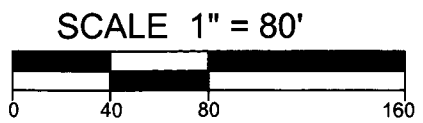
**RECEIVED**

MAY 12 2010

Franklin County Engineer  
Dean C. Ringle, P.E., P.S.



- LEGEND**
- IRON PIN FOUND
  - 30" IRON PIN WITH PLASTIC CAP  
CITY OF WESTERVILLE SURVEY MARKER



C-1	C-2
Δ = 91°15'17"	Δ = 91°15'17"
R = 25.00'	R = 25.00'
L = 39.82'	L = 39.82'
T = 25.55'	T = 25.55'
Ch = 35.74'	Ch = 35.74'
S50°54'22"E	N50°54'22"W

BASIS OF BEARINGS IS THE SUBDIVISION PLAT FOR COLLEGEVIEW PARK - PB 39 Pg 39

I HEREBY CERTIFY THAT THE FOREGOING DRAWING WAS PREPARED FROM AN ACTUAL SURVEY OF THE PREMISES.

*Charles J. Destefani*  
CHARLES J. DESTEFANI  
PROFESSIONAL SURVEYOR No. 5666



DRAWN BY CJD  
DATE OCTOBER 27, 2008  
REV. DATE

PREPARED BY  
CITY OF WESTERVILLE  
ENGINEERING DIVISION

S:\P&D\ENG\AutoCad\Right-of-Way\Main St Vet Clinic.dwg Thu, Feb 05, 2009 - 11:47am