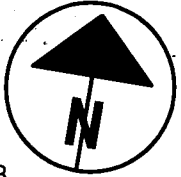


A.5-e

RECEIVED

Franklin County Engineer
Dean C. Ringle, P.E., P.S.

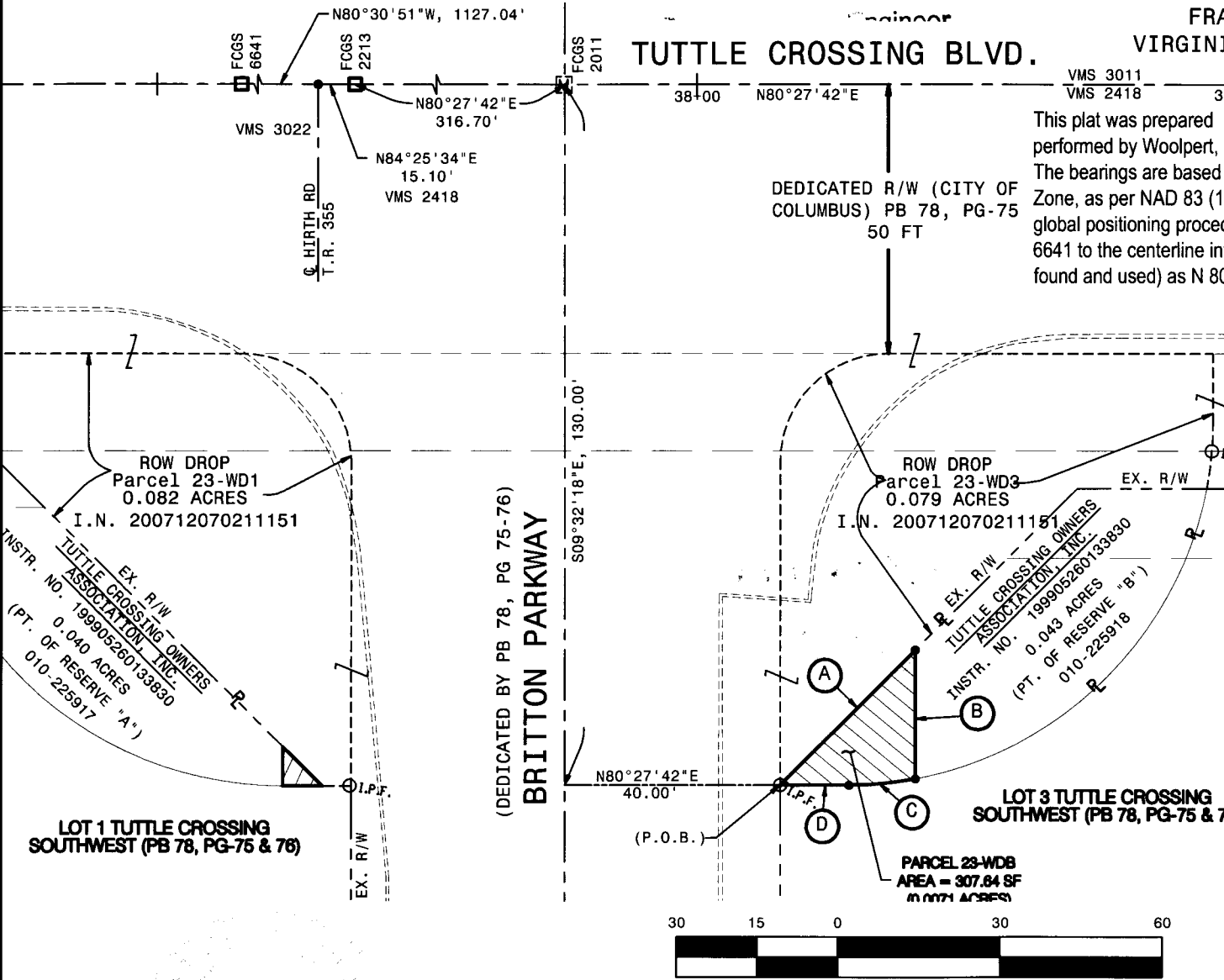
EXHIBIT B
PARCEL 23-WDB
0.0071 AC.
CITY OF COLUMBUS,
FRANKLIN COUNTY, OHIO
VIRGINIA MILITARY SURVEY 2418



LEGEND

- - MONUMENT FOUND
- - IRON PIN SET (5/8" REBAR, 30" LONG, WITH CAP STAMPED "R/W")

MAY 25 2010



This plat was prepared by Joseph S. Bolzenius, PS, based on a field survey performed by Woolpert, Inc. in January, 2002 and verified by Dynotec, Inc. in 2009. The bearings are based on the Ohio State Plane Coordinate System, Ohio South Zone, as per NAD 83 (1986 adjustment), established by Woolpert surveyors using global positioning procedures and equipment, and holding the bearing from FCGS 6641 to the centerline intersection of Hirth Rd and Tuttle Crossing Blvd (RR spike found and used) as N 80°30'51" W.

EX. UTILITY EASEMENT
PB 78, PG 75-76 OR
29553, J-11

EX. R/W
0.052 AC. R/W DROP
INSTR. NO. 200909150134018

EX. 20' COLUMBIA GAS
EASEMENT OR 33070, G-16

OHIO RETAIL, LLC
INSTR. NO.
200601130008877
1.388 ACRES
010-231224-00

- (A) N 35°27'47" E, 35.35'
- (B) S 09°32'18" E, 23.83'
- (C) R = 67.50'
Δ = 10°40'07"
CHORD = 12.55'
CHORD BRG. = S 75°07'33" W
ARC L = 12.57'
- (D) S 80°27'42" W, 12.50'

LOT 1 TUTTLE CROSSING
SOUTHWEST (PB 78, PG-75 & 76)

LOT 3 TUTTLE CROSSING
SOUTHWEST (PB 78, PG-75 & 76)

PARCEL 23-WDB
AREA = 307.64 SF
(0.0071 ACRES)

Joseph S. Bolzenius 5/17/10

JOSEPH S. BOLZENIUS, P.S.
PROFESSIONAL SURVEYOR NO. 7627

DATE

DATE:
5/17/10



DRAWN: BLM
CHECKED: JSB

PARCEL 23-WDB
TUTTLE CROSSING AT EMERALD PKWY
SOUTHEAST CORNER