

6-2-C F-8-F



Evans, Mechwart, Hambleton & Tilton, Inc.
Engineers • Surveyors • Planners • Scientists
5500 New Albany Road, Columbus, OH 43054
Phone: 614.775.4500 Toll Free: 888.775.3648

emht.com

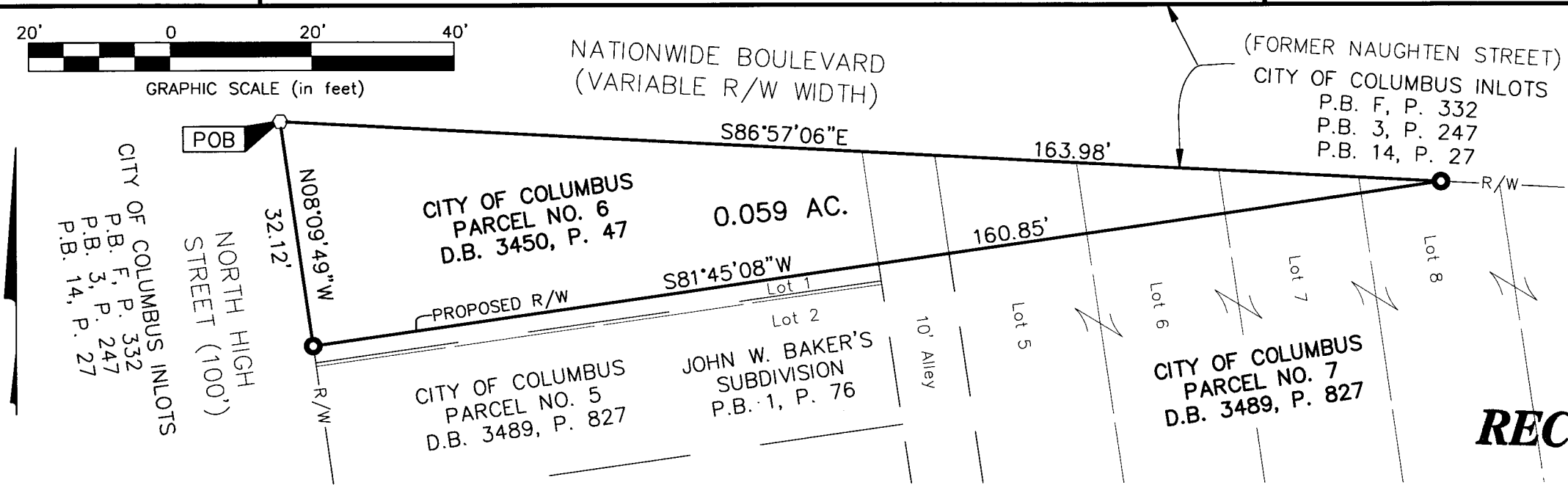
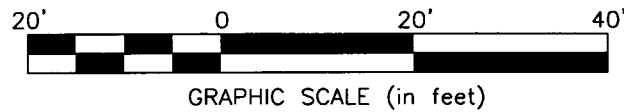
SURVEY OF ACREAGE PARCEL

JOHN W. BAKER'S SUBDIVISION PLAT BOOK 1, PAGE 76 AND CITY OF COLUMBUS, COUNTY OF FRANKLIN, STATE OF OHIO

Date: April 26, 2010

Job No. 2009-1661

Scale: 1" = 20'



CITY OF COLUMBUS INLOTS
P.B. F, P. 332
P.B. 3, P. 247
P.B. 14, P. 27

NORTH HIGH
STREET (100')

CITY OF COLUMBUS
PARCEL NO. 6
D.B. 3450, P. 47

0.059 AC.

CITY OF COLUMBUS
PARCEL NO. 5
D.B. 3489, P. 827

JOHN W. BAKER'S
SUBDIVISION
P.B. 1, P. 76

CITY OF COLUMBUS
PARCEL NO. 7
D.B. 3489, P. 827

(FORMER NAUGHTEN STREET)
CITY OF COLUMBUS INLOTS
P.B. F, P. 332
P.B. 3, P. 247
P.B. 14, P. 27

- = DRILL HOLE SET
- = MAG. NAIL SET

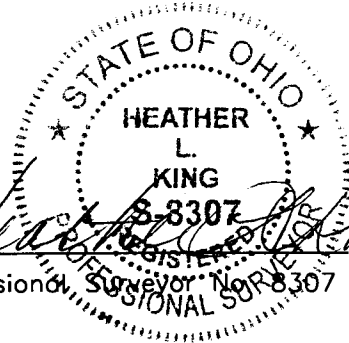
I.P. Set are 13/16" I.D. iron pipe with cap inscribed EMHT INC

SURVEY NOTE:
This survey was prepared using documents of record, prior plats of survey, and observed evidence located by an actual field survey.

RECEIVED

APR 26 2010

Franklin County Engineer
Dean C. Ringle, P.E., P.S.



By *Heather L. King*
Professional Surveyor No. 8307

4/26/10
Date

J:\20091661\20091661\DWG\20091661\BND02.DWG plotted by KING, HEATHER on 4/26/2010 3:07:01 PM last saved by KING on 4/26/2010 3:06:44 PM

BASIS OF BEARINGS:
The bearings shown hereon are based on the Ohio State Plane Coordinate System, South Zone, NAD83 (1986 adjustment). Said bearings originated from a field traverse which was referenced to said coordinate system by GPS observations and observations of monuments 4-83 and 13-83 as published by the Franklin County Engineering Department. The portion of the centerline of Vine Street, having a bearing of South 86°37'33" East is designated the "Basis of Bearing" for this survey.