

RECEIVED

MAY 07 2010

A-3-E

PROJ. NO: CO20070211

FILE NO: 7

DRAWN BY: AJL

CHKD BY: FJA



AMERICAN STRUCTUREPOINT INC.

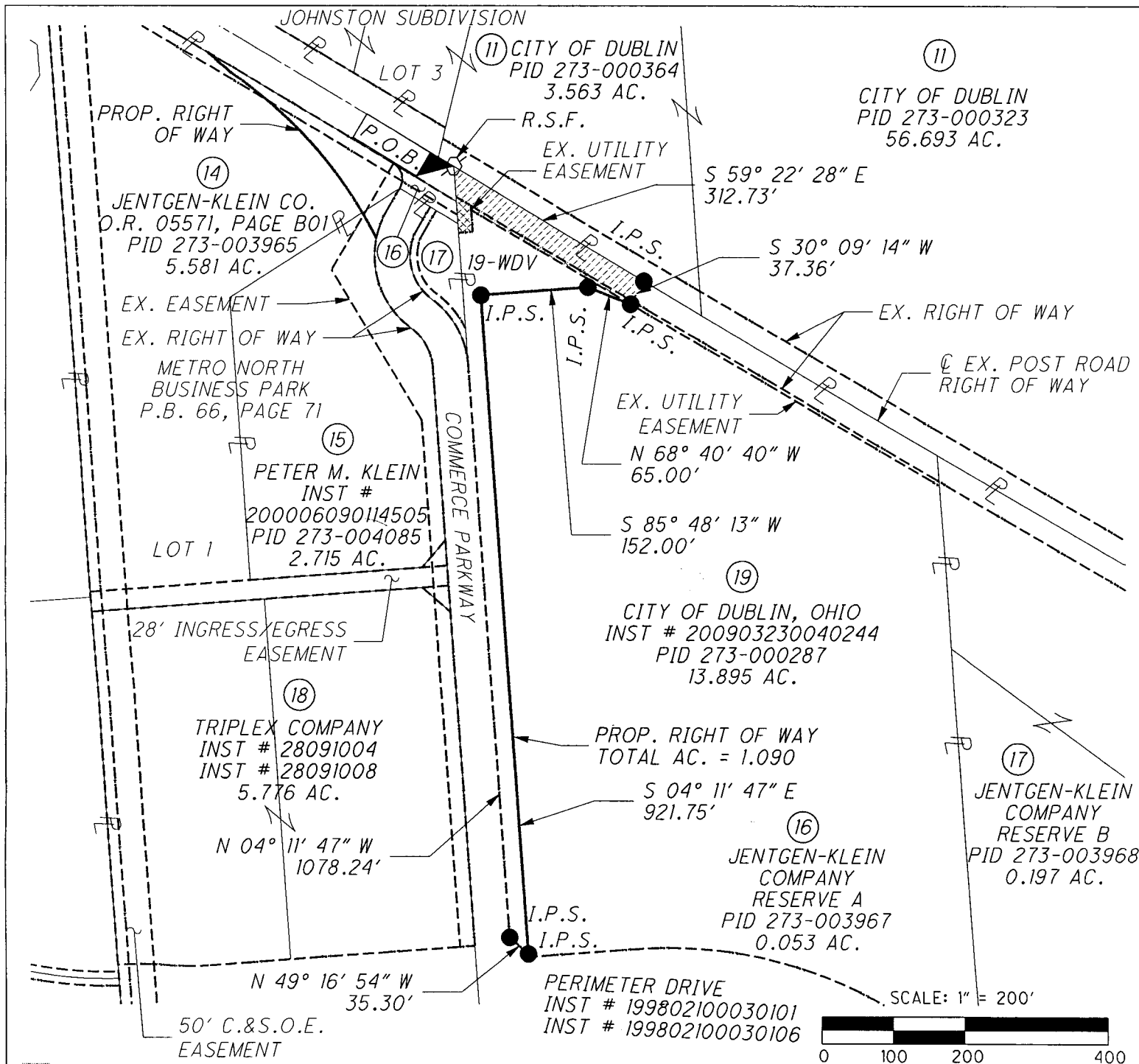
Franklin County Engineer Dean C. Ringle, P.E., P.S.

2550 CORPORATE EXCHANGE DR, STE 300 COLUMBUS, OH 43231 TEL 614.901.2235 FAX 614.901.2236 www.structurepoint.com

EXHIBIT "B" PARCEL 19-WDV

1.090 ACRES RIGHT OF WAY

DUBLIN, OHIO



- = 0.232 AC. PRESENT ROAD OCCUPIED
- = 0.050 AC. EX. UTILITY EASEMENT

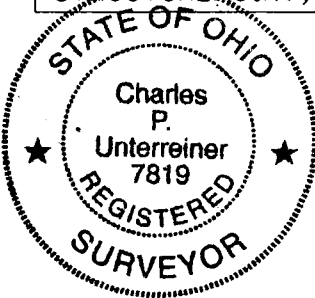
- = IRON PIN SET
  - = IRON PIN FOUND
  - ⊙ = IRON PIPE FOUND
  - Ⓜ = MONUMENT BOX FOUND
  - ⊗ = RAILROAD SPIKE FOUND
- I.P. SET ARE 3/4" I.D. IRON PIN 30" LONG WITH CAP INSCRIBED AMERICAN STRUCTUREPOINT, INC.

BASIS OF BEARING:

THE BEARING OF N 04° 11' 47" W ON THE EAST LINE OF METRO NORTH BUSINESS PARK, PLAT BOOK 66, PAGE 71, IS BASED ON THE OHIO STATE PLANE COORDINATE SYSTEM, SOUTH ZONE, NAD 83 (86 ADJUSTMENT) FROM GPS OBSERVATIONS MADE FROM FRANKLIN COUNTY MONUMENTS "2213", "5534" AND "FRANK72".

I HEREBY CERTIFY THAT:

THIS DRAWING REPRESENTS THE RESULTS OF AN ACTUAL FIELD SURVEY OF THE PREMISES PERFORMED BY AMERICAN STRUCTUREPOINT INC. IN DECEMBER 2007. THIS DRAWING IS CORRECT TO THE BEST OF MY KNOWLEDGE AND BELIEF.



*Charles P. Unterreiner*

CHARLES P. UNTERREINER, P.S. NO. 7819 AMERICAN STRUCTUREPOINT, INC.

2/2/2010 DATE

SITUATED IN THE STATE OF OHIO, COUNTY OF FRANKLIN, CITY OF DUBLIN AND BEING IN VIRGINIA MILITARY SURVEY NUMBER 2542

