

**EXHIBIT B**

NUMBER	DELTA ANG.	RADIUS	ARC LEN	CHORD DIRECTION	CHORD
C1	33°36'03"	511.46'	299.94'	S 59°45'25" E	295.66'
C2	10°56'50"	552.50'	105.56'	S 32°49'55" E	105.40'
C3	12°11'16"	970.00'	206.34'	S 76°42'14" W	205.95'

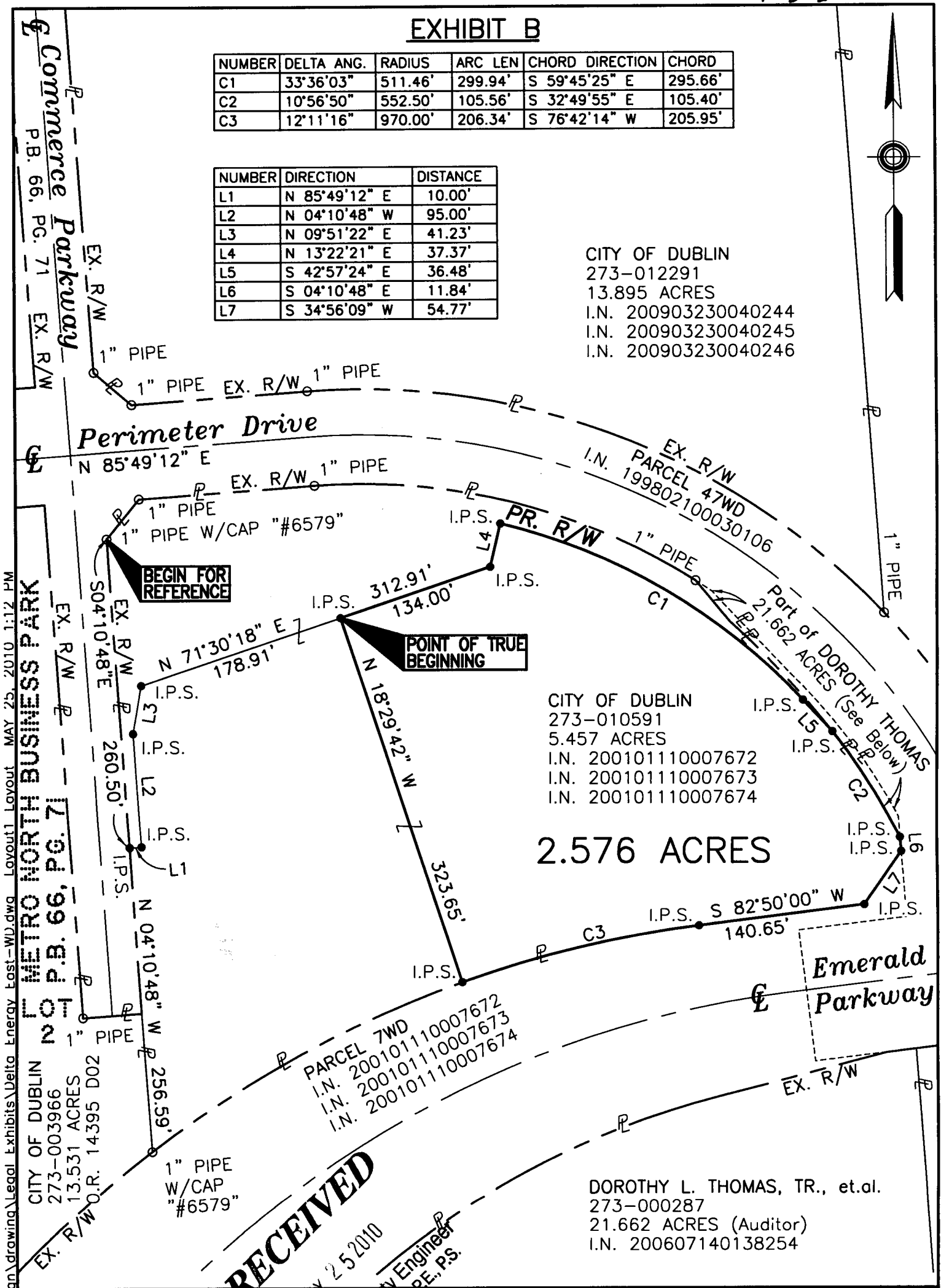
NUMBER	DIRECTION	DISTANCE
L1	N 85°49'12" E	10.00'
L2	N 04°10'48" W	95.00'
L3	N 09°51'22" E	41.23'
L4	N 13°22'21" E	37.37'
L5	S 42°57'24" E	36.48'
L6	S 04°10'48" E	11.84'
L7	S 34°56'09" W	54.77'

CITY OF DUBLIN  
 273-012291  
 13.895 ACRES  
 I.N. 200903230040244  
 I.N. 200903230040245  
 I.N. 200903230040246

CITY OF DUBLIN  
 273-010591  
 5.457 ACRES  
 I.N. 200101110007672  
 I.N. 200101110007673  
 I.N. 200101110007674

**2.576 ACRES**

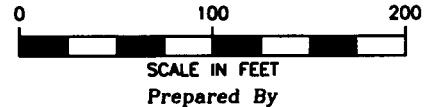
DOROTHY L. THOMAS, TR., et.al.  
 273-000287  
 21.662 ACRES (Auditor)  
 I.N. 200607140138254



**RECEIVED**  
 MAY 25 2010  
 Franklin County Engineer  
 Dean C. Ringle, P.E., P.S.



**2.576 ACRE PARCEL**  
**EMERALD PKWY. & PERIMETER DR.**  
 FRANKLIN COUNTY, CITY OF DUBLIN, OHIO  
 VIRGINIA MILITARY SURVEY 2542



Stantec Consulting Services, Inc.  
 1500 Lake Shore Drive, Suite 100  
 Columbus, Ohio 43204  
 Phone: (614) 486-4383

**Stantec**  
*Tim Baker* 5-25-10  
 Registered Surveyor #7818 Date

U:\1\5608613\transportation\design\legal Exhibits\Delta Energy East-WD.dwg Layout1 Layout MAY 25 2010 1:12 PM  
 t\1\5608613\transportation\design\legal Exhibits\Delta Energy East-WD.dwg Layout1 Layout MAY 25 2010 1:12 PM

METRO NORTH BUSINESS PARK  
 P.B. 66, PG. 71  
 CITY OF DUBLIN  
 273-003966  
 13.531 ACRES  
 W.O.R. 14395 D02

**MONUMENT LEGEND**

- ⊠ R.R.S. FOUND
- REBAR FOUND
- IRON PIN FOUND
- ⊙ R/W MONUMENT FD
- 3/4" IRON PIPE SET WITH RED CAP "STANTEC"

**BASIS OF BEARINGS**

THE BEARINGS ARE BASED ON THE CENTERLINE OF COMMERCE PARKWAY AS BEING N04°10'48"W, FROM AN ACTUAL FIELD SURVEY USING G.P.S. METHODS FROM FRANKLIN COUNTY MONUMENTS #5417, #4463, AND #N8-94, FROM THE OHIO STATE PLANE COORDINATE SYSTEM, SOUTH ZONE, NORTH AMERICAN DATUM 1983 (1986 ADJUSTMENT).