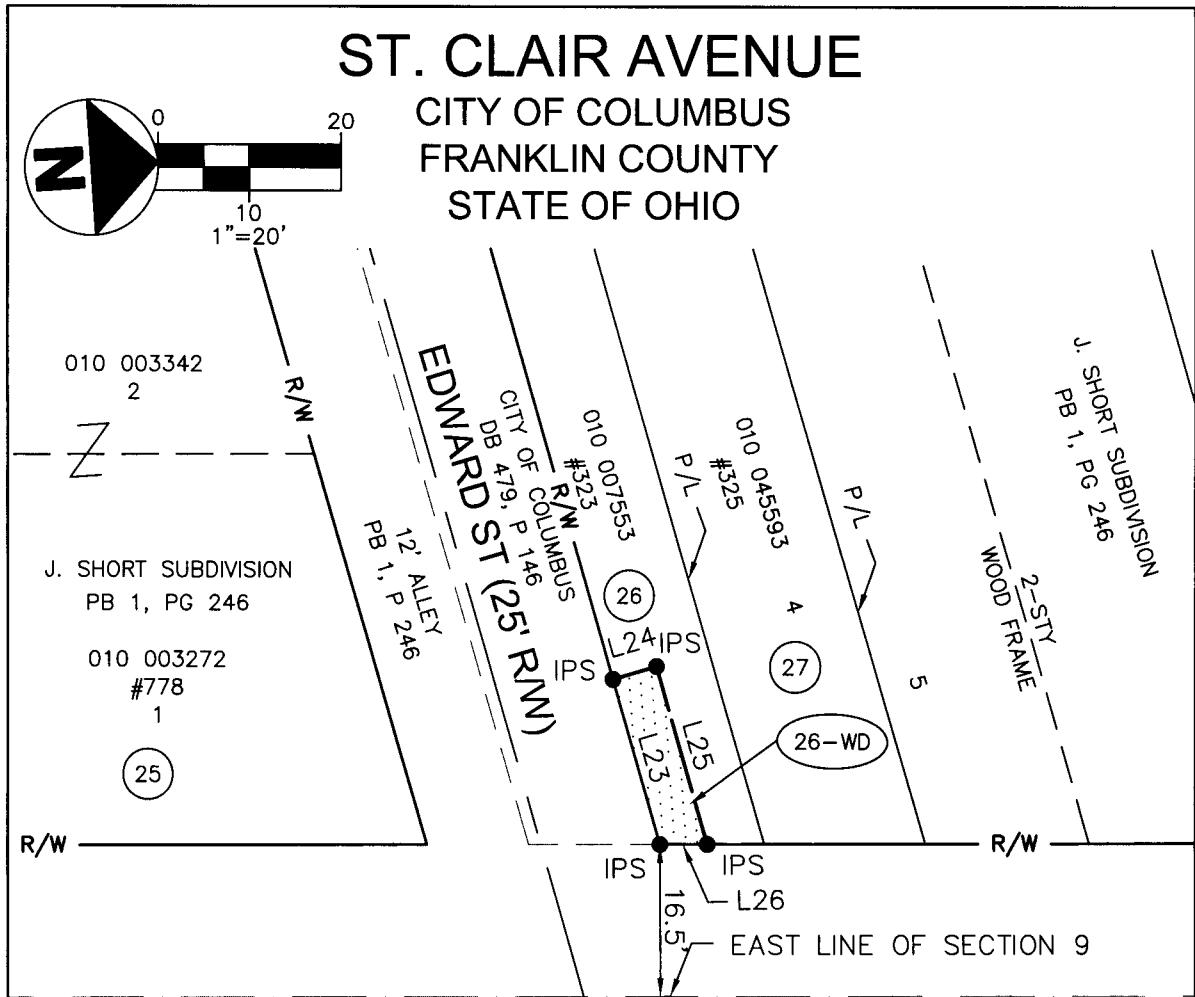


RECEIVED

MAY 17 2010

Franklin County Engineer
Dean C. Ringle, P.E., P.S.



102
N 3°44'49" E

ST CLAIR AVE
(49.75' R/W)
PB 7, PG 14
103

REFERENCE DOCUMENTS:

THE BOUNDARY SURVEY IS BASED ON INSTRUMENT NUMBER 200308210265589 AND PLAT BOOK 1, PAGE 246.

BASIS OF BEARINGS:

THE BASIS OF BEARING, N77°17'44"E, WAS DETERMINED FROM A GPS SURVEY USING FRANKLIN COUNTY MONUMENT COC 13-83 AND PORT COLUMBUS INTERNATIONAL AIRPORT MONUMENT CEC 8. PROJECT IS IN THE OHIO STATE PLANE COORDINATE SYSTEM, NAD 83 (86), SOUTH ZONE.

• IPS IRON PIN SET W/CAP THAT READS "CW DESIGN GROUP"

WARRANTY DEED TAKE

(25) E&D PROPERTIES

(26) STALLWORTH LINDA A

(27) SHILOH BAPTIST CHURCH



LINE TABLE		
LINE	LENGTH	BEARING
L23	18.57	S77°49'34"W
L24	5.00	N12°10'26"W
L25	20.00	N77°49'34"E
L26	5.20	S03°44'17"W

THIS PLAT WAS MADE IN ACCORDANCE WITH A RECENT SURVEY DATED 2009.11.30.

Charles A. Wagner 2010.05.12
CHARLES A. WAGNER, PS-8091 DATE
CW DESIGN GROUP, LLC

CW Design Group
ENGINEERS | SURVEYORS

PHONE: 614-846-9279
FAX: 614-846-9276

972 Linkfield Drive
Worthington, Ohio 43085

PLAT OF SURVEY
PARCEL 26-WD
0.003 ACRE TRACT

06-0011

1
1

2010.01.15