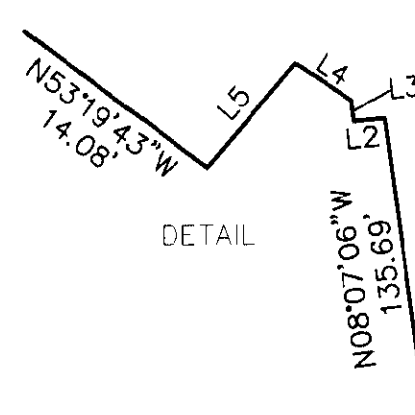
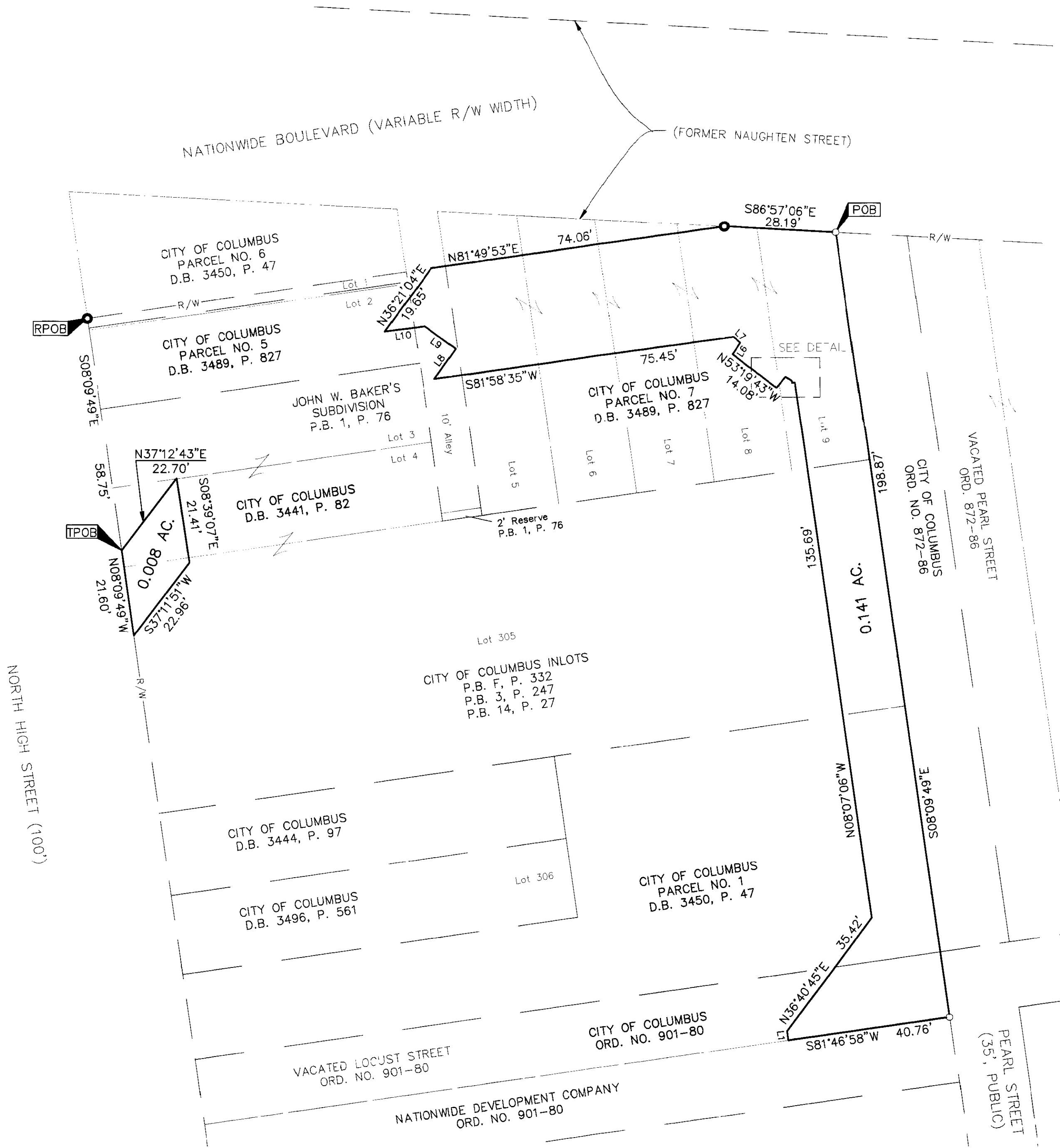


SURVEY OF ACREAGE PARCELS

JOHN W. BAKER'S SUBDIVISION PLAT BOOK 1, PAGE 76 AND
CITY OF COLUMBUS INLOTS PLAT BOOK 14, PAGE 27
CITY OF COLUMBUS, COUNTY OF FRANKLIN, STATE OF OHIO



LINE TABLE		
LINE	BEARING	DISTANCE
L1	N07°07'39\"W	2.29'
L2	S84°02'12\"W	0.79'
L3	N06°10'03\"W	0.55'
L4	N56°48'25\"W	1.76'
L5	S40°22'50\"W	3.57'
L6	N34°43'05\"E	3.48'
L7	N49°30'49\"W	2.27'
L8	N35°44'22\"E	9.31'
L9	N54°10'05\"W	9.64'
L10	S82°30'50\"W	10.04'

By *[Signature]*
Professional Surveyor No. 8307

Date: 4/26/10

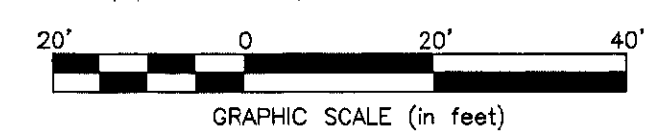
RECEIVED

Franklin County Engineer
David G. Brown, M.E.S.

- = DRILL HOLE SET
 - = MON. FND.
 - = I.P. FND.
 - = I.P. SET
 - = I.P. SET
 - = MAG. NAIL FND.
 - = MAG. NAIL SET
 - ▲ = R.R. SPK. FND.
 - △ = R.R. SPK. SET
 - ◆ = P.K. NAIL FND.
- I.P. Set are 13/16" I.D. iron pipe with cap inscribed EMHT INC

SURVEY NOTE:
This survey was prepared using documents of record, prior plats of survey, and observed evidence located by an actual field survey.

BASIS OF BEARINGS:
The bearings shown hereon are based on the Ohio State Plane Coordinate System, South Zone, NAD83 (1986 adjustment). Said bearings originated from a field traverse which was referenced to said coordinate system by GPS observations and observations of monuments 4-83 and 13-83 as published by the Franklin County Engineering Department. The portion of the centerline of Vine Street, having a bearing of South 86°37'33" East is designated the "Basis of Bearing" for this survey.



<p>Evans, Mechwart, Hambleton & Tillon, Inc. Engineers • Surveyors • Planners • Scientists 5500 New Albany Road, Columbus, OH 43054 Phone: 614.775.4500 Toll free: 888.775.3648 emht.com</p>	Date: April 26, 2010	
	Scale: 1" = 20'	
	Job No: 2009-1661	
	Sheet: 1 of 1	
REVISIONS		
MARK	DATE	DESCRIPTION

J:\20091661\20091661\SW\DWG\20091661BNDY1.DWG plotted by KING, HEATHER on 4/26/2010 2:33:56 PM last saved by KING on 4/26/2010 2:33:31 PM