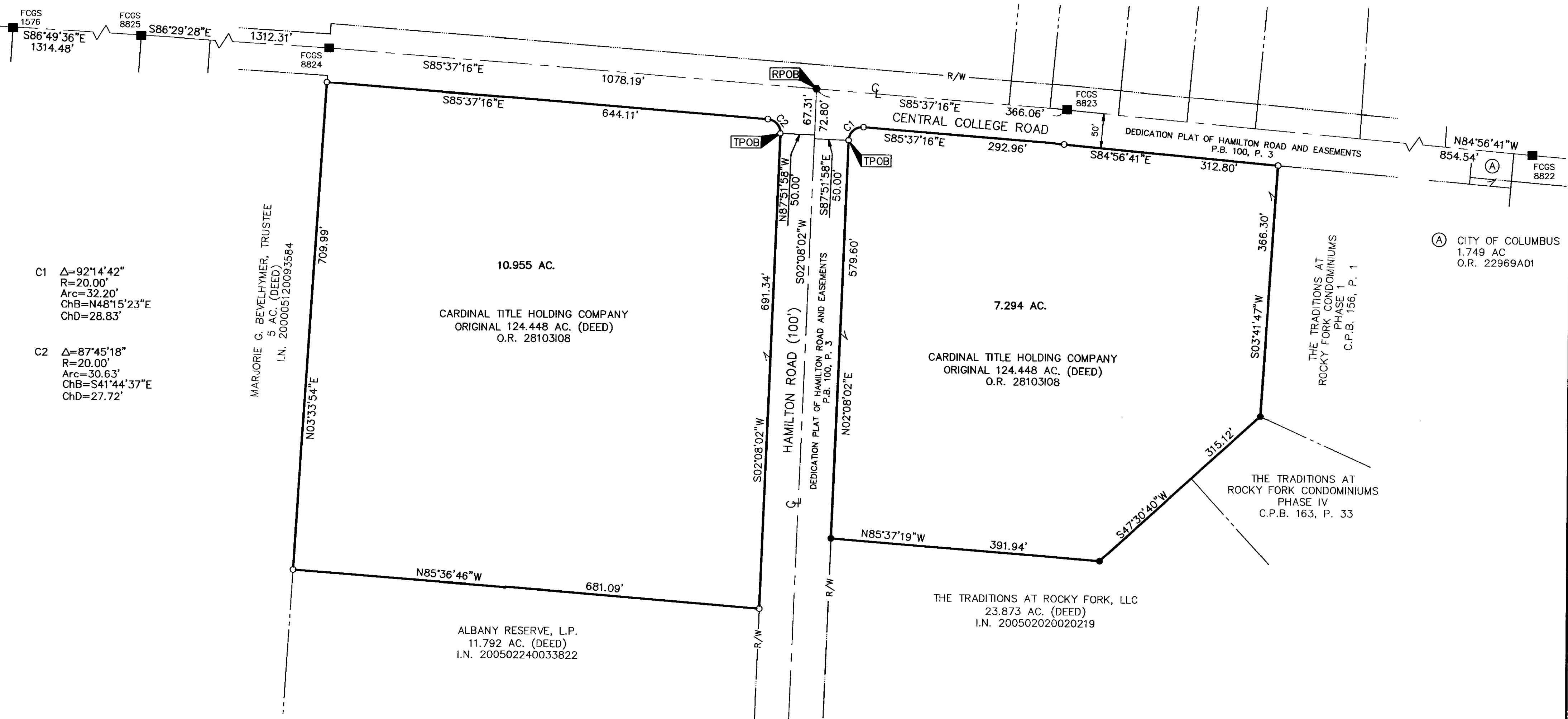


SURVEY OF ACREAGE TRACT

QUARTER TOWNSHIP 2, TOWNSHIP 2, RANGE 16
 UNITED STATES MILITARY LANDS
 CITY OF COLUMBUS, COUNTY OF FRANKLIN, STATE OF OHIO



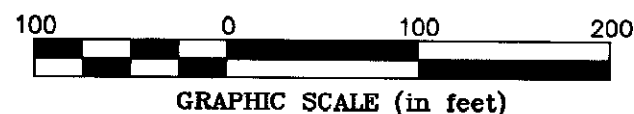
C1 Δ=92°14'42"
 R=20.00'
 Arc=32.20'
 ChB=N48°15'23"E
 ChD=28.83'

C2 Δ=87°45'18"
 R=20.00'
 Arc=30.63'
 ChB=S41°44'37"E
 ChD=27.72'

MARJORIE G. BEVELHYMER, TRUSTEE
 5 AC. (DEED)
 I.N. 200005120093584

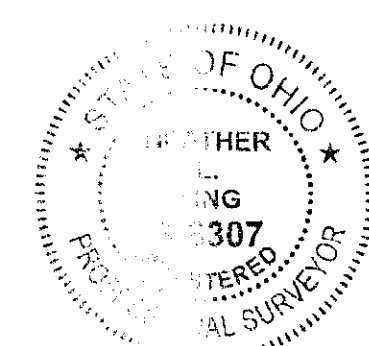
(A) CITY OF COLUMBUS
 1.749 AC
 O.R. 22969A01

- = MON. FND.
 - = 3/4" I.P. FND.
CAPPED "EDG"
 - = I.P. SET
 - = MAG. NAIL FND.
- I.P. Set are 13/16" I.D. iron pipe with cap inscribed EMHT INC



BASIS OF BEARINGS: Bearings are based on the Ohio State Coordinate System, NAD83 (1986 Adjustment). Control for bearings was derived, using Global Positioning System procedures and equipment, from coordinates for FCGS monuments 8824 & 8825, having a bearing of North 86° 29' 28" West, as established by the Franklin County Engineering Department.

SURVEY NOTE: This survey was prepared using documents of record, prior plats of survey, and observable field evidence.



By *Donald W. Kelley* 4/22/10
 Professional Surveyor No. 8307

EMHT		Date: April 22, 2010
Evans, Mechwart, Hambleton & Tilton, Inc. Engineers • Surveyors • Planners • Scientists 5500 New Albany Road, Columbus, OH 43054 Phone: 614.775.4500 Fax: 614.775.4900		Scale: 1" = 100'
		Job No: 2010-0409
		Sheet: 1 of 1
REVISIONS		
MARK	DATE	DESCRIPTION

\\CMHDATA01\PROJECT01\20100409\20100409SV\DWG\20100409BNDY1.DWG:18X24 LANDSCAPE> - NO XREFS - LAST SAVED BY HIKING [4/21/2010 4:49:28 PM] - PLOTTED BY HIKING [4/21/2010 4:58:08 PM]