

APR 06 2010

Franklin County Engineer  
Dean C. Ringle, P.E., P.S.

I-9-D



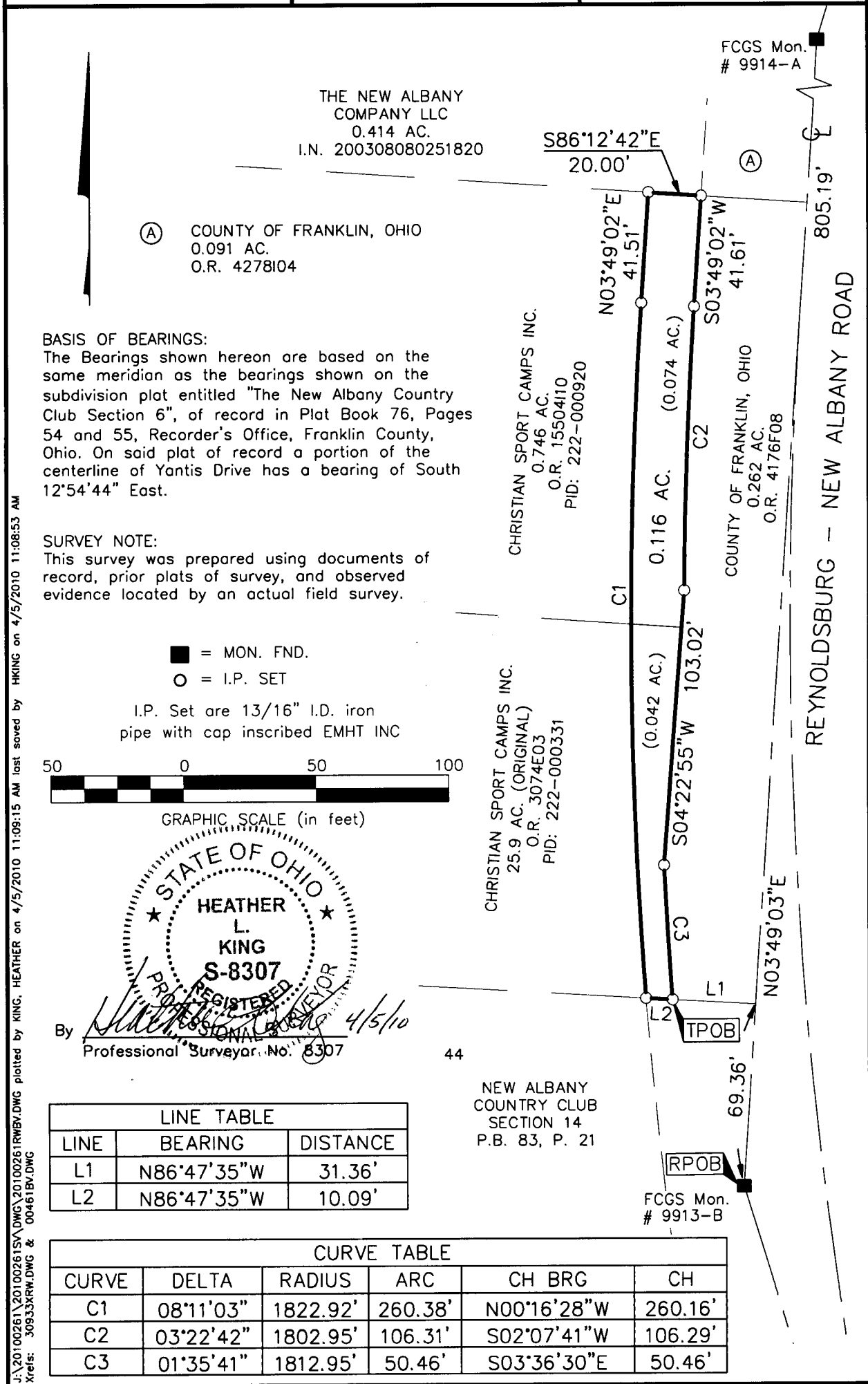
Evans, Mechwart, Hambleton & Tilton, Inc.  
Engineers • Surveyors • Planners • Scientists  
5500 New Albany Road, Columbus, OH 43054  
Phone: 614.775.4500 Toll Free: 888.775.3648  
emht.com

**SURVEY OF ACREAGE PARCEL**  
LOT 35, QUARTER TOWNSHIP 4, TOWNSHIP 2, RANGE 16  
UNITED STATES MILITARY LANDS  
VILLAGE OF NEW ALBANY, COUNTY OF FRANKLIN, STATE OF OHIO

Date: April 5, 2010

Job No. 2010-0261

Scale: 1" = 50'



**BASIS OF BEARINGS:**  
The Bearings shown hereon are based on the same meridian as the bearings shown on the subdivision plat entitled "The New Albany Country Club Section 6", of record in Plat Book 76, Pages 54 and 55, Recorder's Office, Franklin County, Ohio. On said plat of record a portion of the centerline of Yantis Drive has a bearing of South 12°54'44" East.

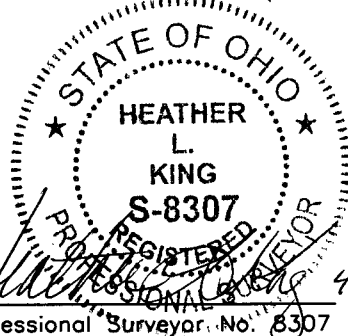
**SURVEY NOTE:**  
This survey was prepared using documents of record, prior plats of survey, and observed evidence located by an actual field survey.

- = MON. FND.
- = I.P. SET

I.P. Set are 13/16" I.D. iron pipe with cap inscribed EMHT INC



GRAPHIC SCALE (in feet)



LINE TABLE		
LINE	BEARING	DISTANCE
L1	N86°47'35"W	31.36'
L2	N86°47'35"W	10.09'

CURVE TABLE					
CURVE	DELTA	RADIUS	ARC	CH BRG	CH
C1	08°11'03"	1822.92'	260.38'	N00°16'28"W	260.16'
C2	03°22'42"	1802.95'	106.31'	S02°07'41"W	106.29'
C3	01°35'41"	1812.95'	50.46'	S03°36'30"E	50.46'

J:\20100261\20100261SV.DWG\20100261RWBV.DWG plotted by KING, HEATHER on 4/5/2010 11:09:15 AM last saved by HKING on 4/5/2010 11:08:53 AM Xrefs: 30933XRW.DWG & 00461BV.DWG