



Evans, Mechwart, Hambleton & Tilton, Inc.
 Engineers • Surveyors • Planners • Scientists
 5500 New Albany Road, Columbus, OH 43054
 Phone: 614.775.4500 Fax: 614.775.4800

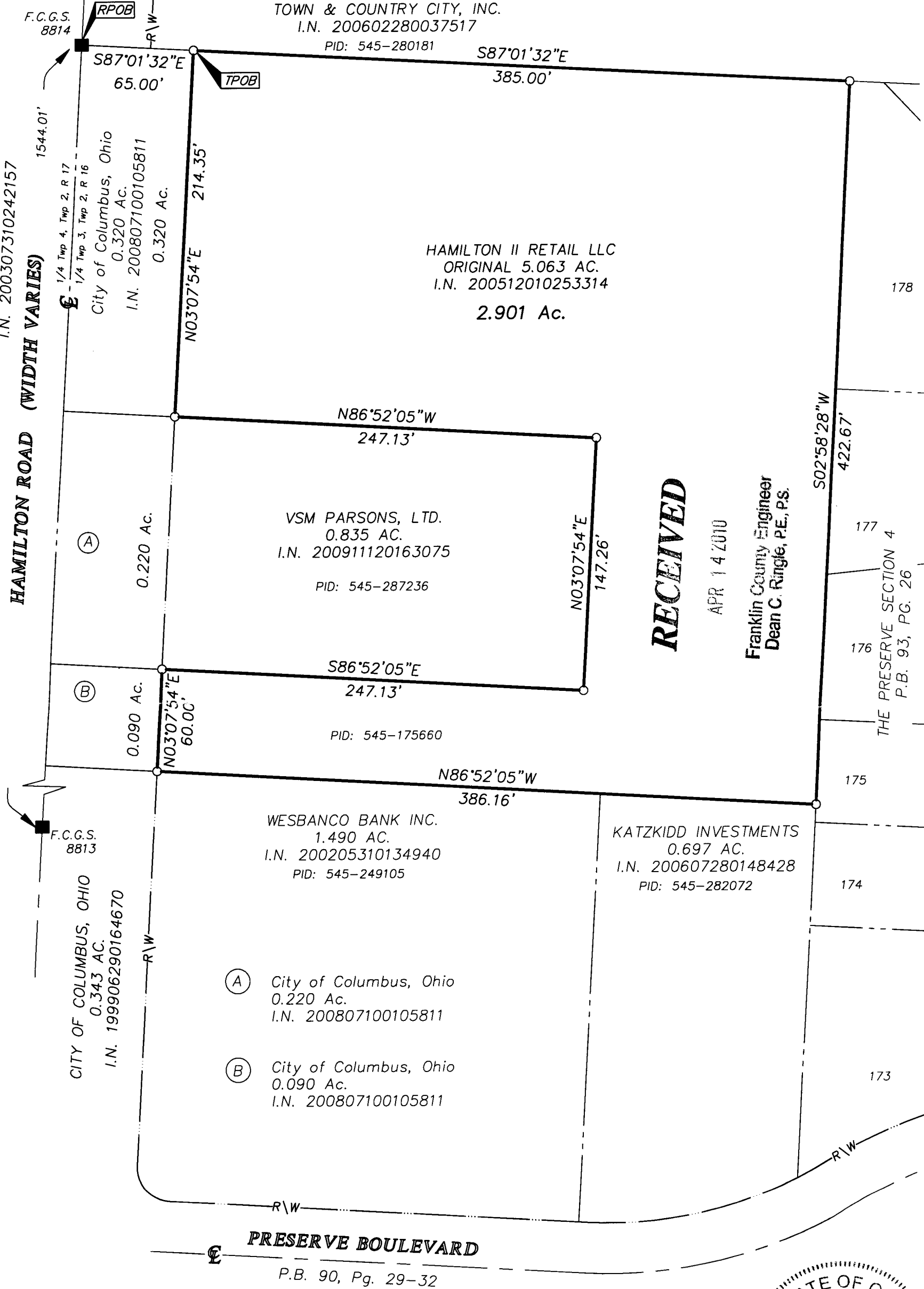
SURVEY OF ACREAGE TRACT
QUARTER TOWNSHIP 3, TOWNSHIP 2, RANGE 16
UNITED STATES MILITARY LANDS
CITY OF COLUMBUS, COUNTY OF FRANKLIN, STATE OF OHIO

Date: April 13, 2010

Scale: 1" = 60'

Job No: 2010-0474

M C M X X V I



RECEIVED

APR 14 2010

Franklin County Engineer
 Dean C. Ringle, P.E., P.S.

BASIS OF BEARINGS: The basis of bearing for this drawing is North 03° 07' 54" East for the centerline of Hamilton Road between Franklin County Geodetic Survey Monument Numbers 8813 and 8814.

- = STONE FND.
- = MON. FND.
- = I.P. FND.
- = I.P. SET
- = MAG. NAIL FND.
- = MAG. NAIL SET
- ▲ = R.R. SPK. FND.
- △ = R.R. SPK. SET
- ◆ = P.K. NAIL FND.



GRAPHIC SCALE (in feet)

I.P. Set are 13/16" I.D. iron pipe with cap inscribed EMHT INC



By *Heather L. King* 4/14/10
 Professional Surveyor No. 8307

\\CMHDATA01\PROJECT01\20100474\20100474SV\20100474BV.DWG<11X17 PORTRAIT CANNON> - NO XREFS - LAST SAVED BY MRSISLER [4/13/2010 1:18:04 PM] - PLOTTED BY MRSISLER [4/13/2010 1:18:05 PM]