

# EMHT

Evans, Mechwart, Hambleton & Tilton, Inc.  
 Engineers • Surveyors • Planners • Scientists  
 5500 New Albany Road, Columbus, OH 43054  
 Phone: 614.775.4500 Fax: 614.775.4800

M C M X X V I

## SURVEY OF ACREAGE TRACT SECTION 11, TOWNSHIP 5, RANGE 22 REFUGEE LANDS CITY OF COLUMBUS, COUNTY OF FRANKLIN, STATE OF OHIO

Date: August 11, 2008

Scale: 1" = 20'

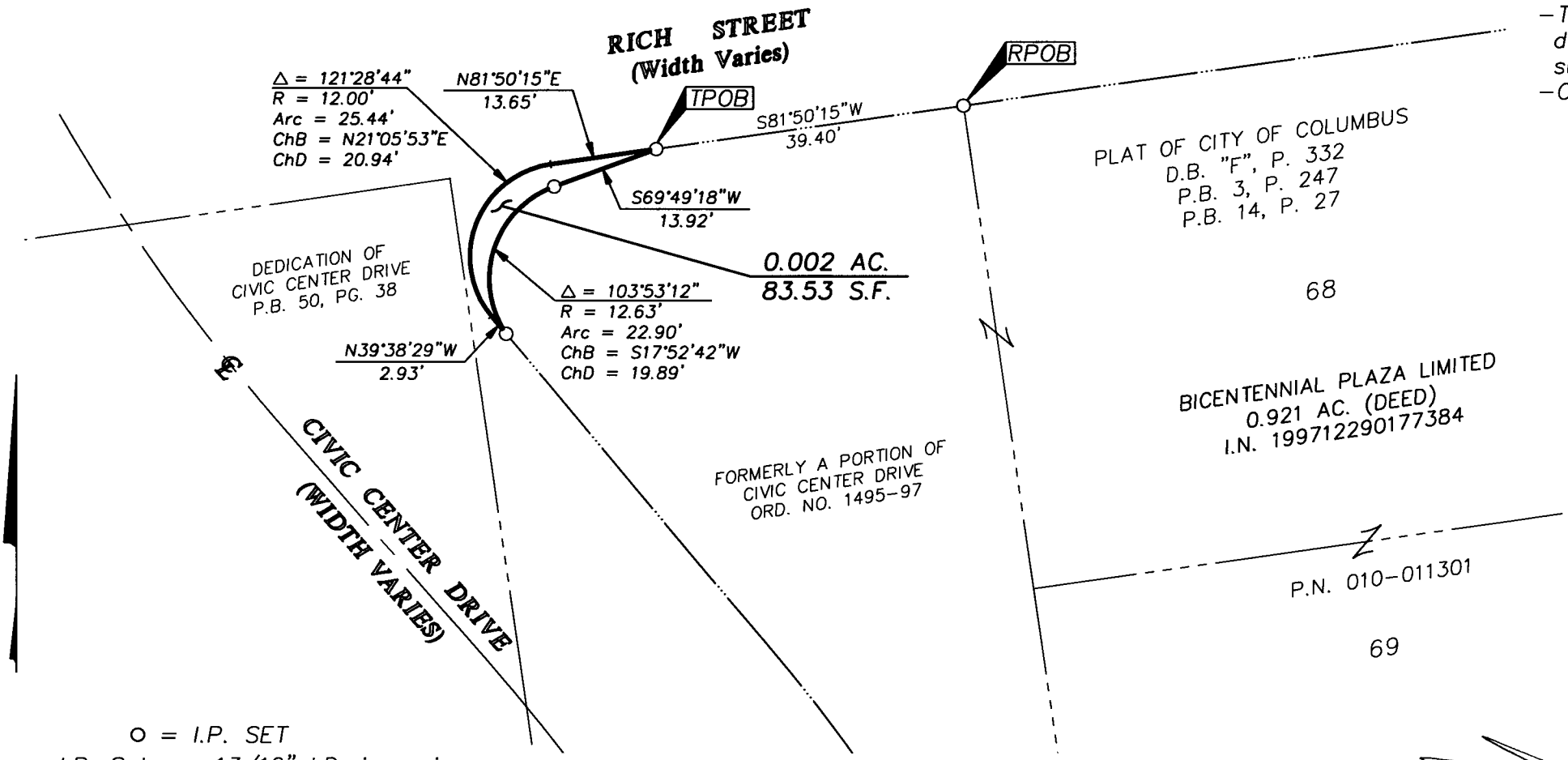
Job No: 2007-1335

Notes:  
 -This survey was prepared using documents of record, prior plats of survey, and observable field evidence.  
 -Occupation is, as shown, on survey.

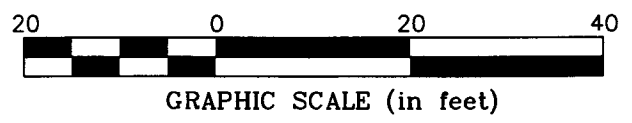
### RECEIVED

FFR 12 2010

Franklin County Engineer  
 Dean C. Ringle, P.E., P.S.



○ = I.P. SET  
 I.P. Set are 13/16" I.D. iron pipe  
 30" long with cap inscribed EMHT INC



**BASIS OF BEARINGS:** Bearings are based on a bearing of North 08° 08' 35" West for a portion of the centerline of High Street.



2/12/10

By \_\_\_\_\_  
 Professional Surveyor No. 8250

I:\GMAPR1\ARCHIVED\2007\20071335\DWG\71335B12\_REVISIONS.DWG-LEGAL LANDS - NO IRREFS - LAST SAVED BY SGEIGER [8/12/2008 8:12:37 AM] - PLOTTED BY SGEIGER [8/12/2010 8:41:09 AM]