



Evans, Mechwart, Hambleton & Tilton, Inc.  
 Engineers • Surveyors • Planners • Scientists  
 5500 New Albany Road, Columbus, OH 43054  
 Phone: 614.775.4500 Toll Free: 888.775.3648  
 emht.com

# SURVEY OF ACREAGE TRACT

SECTION 15, TOWNSHIP 2, RANGE 16

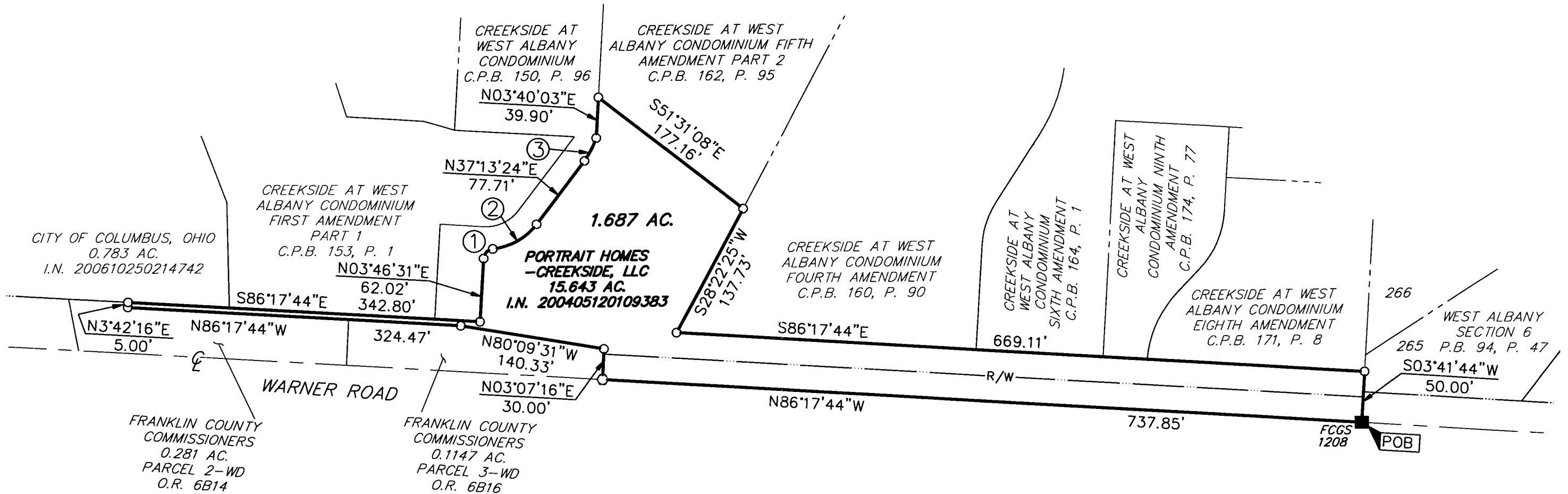
UNITED STATES MILITARY LANDS

CITY OF COLUMBUS, COUNTY OF FRANKLIN, STATE OF OHIO

Date: October 22, 2009

Scale: 1" = 100'

Job No: 2009-1353



**RECEIVED**

FEB 01 2010

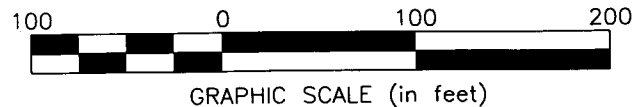
Franklin County Engineer  
 Dean C. Ringle, P.E., P.S.

- ① Δ=80°22'46"  
 R=10.00'  
 ChBrg=N43°57'55"E  
 Ch=12.91'  
 Arc=14.03'
- ② Δ=46°56'33"  
 R=61.00'  
 ChBrg=N60°41'01"E  
 Ch=48.59'  
 Arc=49.98'
- ③ Δ=15°37'05"  
 R=93.08'  
 ChBrg=N27°21'54"E  
 Ch=25.29'  
 Arc=25.37'



■ = MON. FND.  
 ○ = I.P. SET  
 ◯ = MAG. NAIL SET  
 I.P. Set are 13/16" I.D. iron pipe with cap inscribed EMHT INC

**BASIS OF BEARINGS:** Bearings are based on the Ohio State Plane Coordinate System as per NAD 83 (1986 adjustment). Control for bearings was from coordinates of monuments 8824 and 8825, having a bearing of North 86°29'28" West, established by the Franklin County Engineering Department, using Global Positioning System procedures and equipment.



By [Signature] Professional Surveyor No. 8250 Date 10/22/09

J:\2009\1353\20091353SV\DWG\91353BV.DWG plotted by MASTON, JOHN on 1/28/2010 10:13:55 AM last saved by MRRISLER on 10/28/2009 3:05:13 PM