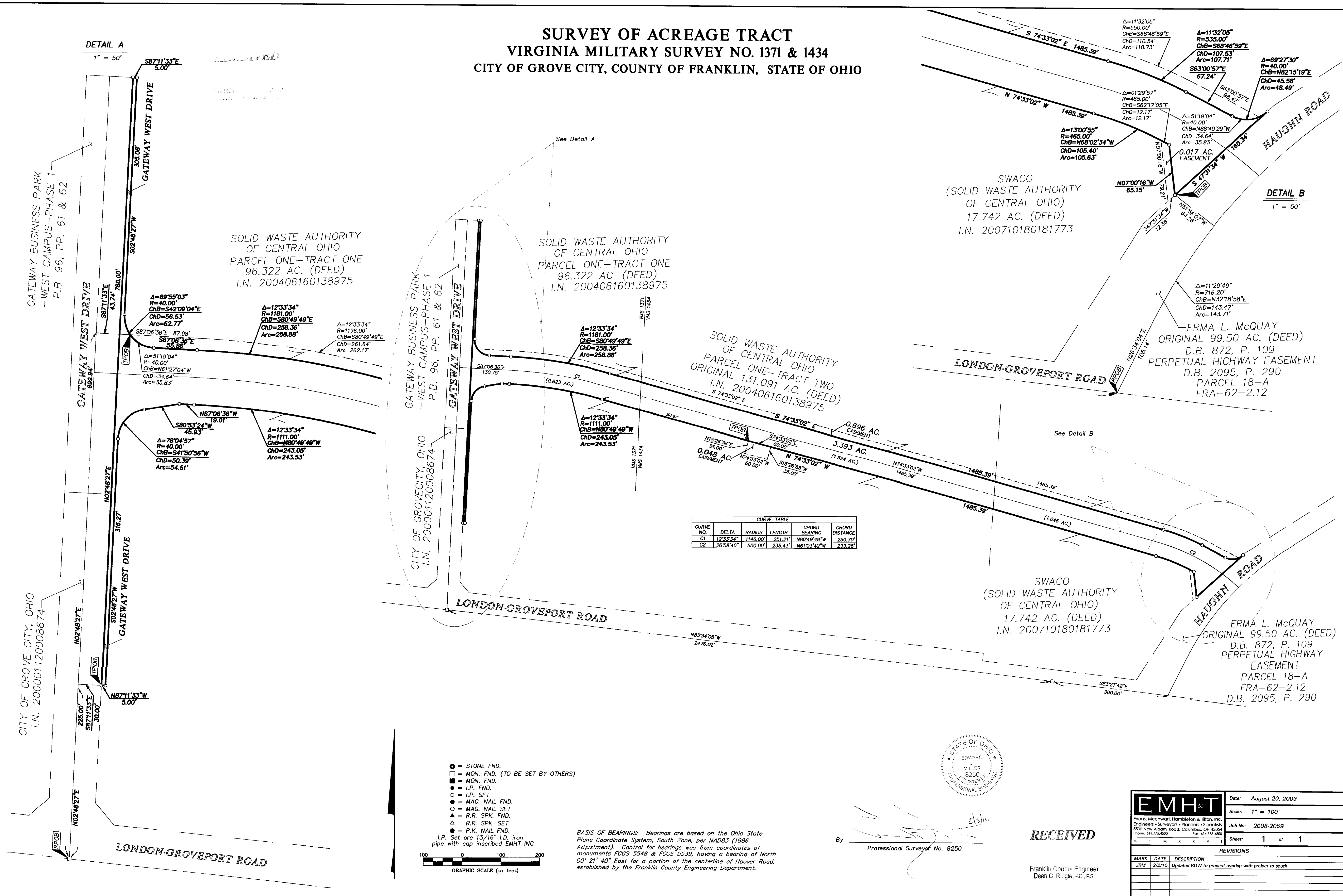


# SURVEY OF ACREAGE TRACT

## VIRGINIA MILITARY SURVEY NO. 1371 & 1434

### CITY OF GROVE CITY, COUNTY OF FRANKLIN, STATE OF OHIO

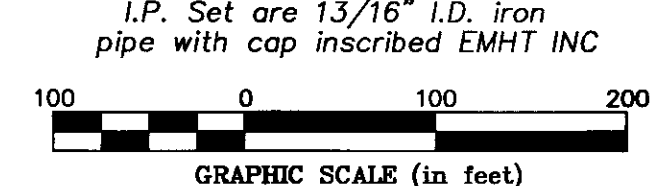


**DETAIL A**  
1" = 50'

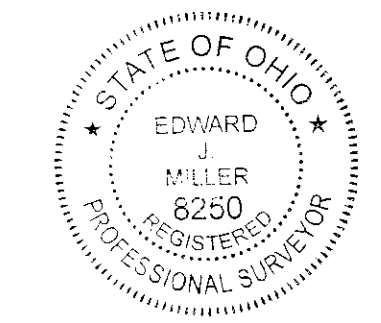
**DETAIL B**  
1" = 50'

CURVE TABLE					
CURVE NO.	DELTA	RADIUS	LENGTH	CHORD BEARING	CHORD DISTANCE
C1	12°33'34"	1146.00'	251.21'	N80°49'49"W	250.70'
C2	26°58'40"	500.00'	235.43'	N61°03'42"W	233.26'

- = STONE FND.
  - = MON. FND. (TO BE SET BY OTHERS)
  - = MON. FND.
  - = I.P. FND.
  - = I.P. SET
  - = MAG. NAIL FND.
  - = MAG. NAIL SET
  - ▲ = R.R. SPK. FND.
  - ▲ = R.R. SPK. SET
  - = P.K. NAIL FND.
- I.P. Set are 13/16" I.D. iron pipe with cap inscribed EMHT INC



**BASIS OF BEARINGS:** Bearings are based on the Ohio State Plane Coordinate System, South Zone, per NAD83 (1986 Adjustment). Control for bearings was from coordinates of monuments FCGS 5548 & FCGS 5539, having a bearing of North 00° 21' 40" East for a portion of the centerline of Hoover Road, established by the Franklin County Engineering Department.



By *[Signature]*  
Professional Surveyor No. 8250

**RECEIVED**

Franklin County Engineer  
Dean C. Ringle, P.E., P.S.

<b>EMHT</b> Evans, Mechwart, Hamilton & Tilton, Inc. Engineers • Surveyors • Planners • Scientists 5500 New Albany Road, Columbus, OH 43254 Phone: 614.725.4500 Fax: 614.725.4600		Date: August 20, 2009
		Scale: 1" = 100'
Job No: 2008-2059		Sheet: 1 of 1
REVISIONS		
MARK	DATE	DESCRIPTION
JRM	2/2/10	Updated ROW to prevent overlap with project to south

\\C:\DATA\1\PROJECT\1\20082059\20082059.DWG 20082059.DWG 20082059.DWG - LAST SAVED BY: MRISLER 18/27/2009 9:42:09 AM - PLOTTED BY: MRISLER 18/27/2009 9:42:09 AM