

F-8-B

22014

EMH&T
 Evans, Mechwart, Hambleton & Tilton, Inc.
 Engineers • Surveyors • Planners • Scientists
 5500 New Albany Road, Columbus, OH 43054
 Phone: 614.775.4500 Fax: 614.775.4800

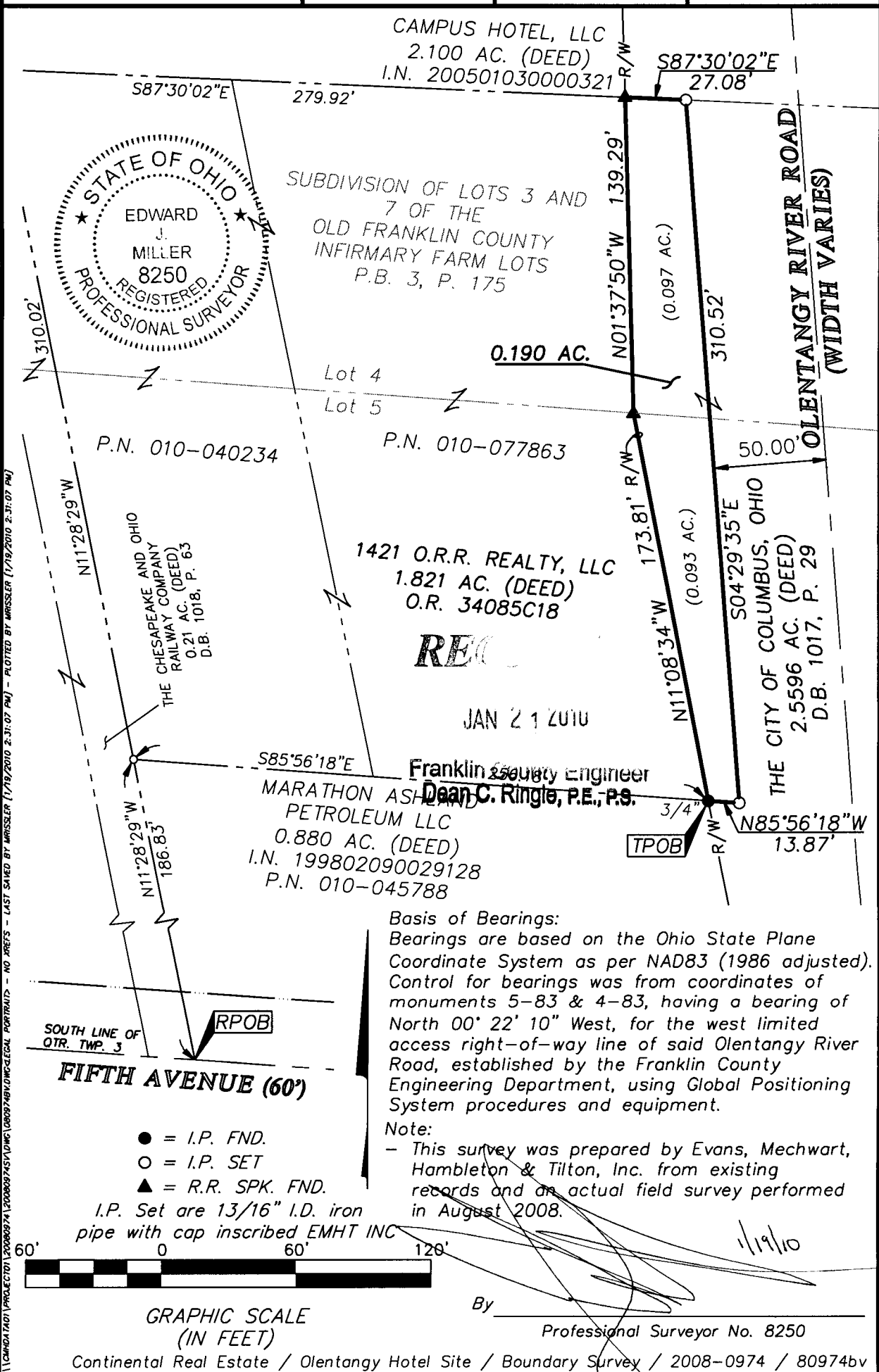
SURVEY OF ACREAGE TRACT
QUARTER TOWNSHIP 3, TOWNSHIP 1, RANGE 18
UNITED STATES MILITARY DISTRICT
CITY OF COLUMBUS, COUNTY OF FRANKLIN, STATE OF OHIO

M C M X X V

Date: January 19, 2010

Job No. 2008-0974

Scale: 1" = 60'



11/19/10 12:00:09 PM - LAST SAVED BY MRSSLER (1/19/2010 2:31:07 PM) - PLOTTED BY MRSSLER (1/19/2010 2:31:07 PM)

CAMPUS HOTEL, LLC
 2.100 AC. (DEED)
 I.N. 200501030000321



SUBDIVISION OF LOTS 3 AND
 7 OF THE
 OLD FRANKLIN COUNTY
 INFIRMARY FARM LOTS
 P.B. 3, P. 175

Lot 4
 Lot 5

P.N. 010-040234

P.N. 010-077863

THE CHESAPEAKE AND OHIO
 RAILWAY COMPANY
 0.21 AC. (DEED)
 D.B. 1018, P. 63

1421 O.R.R. REALTY, LLC
 1.821 AC. (DEED)
 O.R. 34085C18

REC

JAN 21 2010

Franklin County Engineer
 Dean C. Ringle, P.E., P.S.

MARATHON ASH AND
 PETROLEUM LLC
 0.880 AC. (DEED)
 I.N. 199802090029128
 P.N. 010-045788

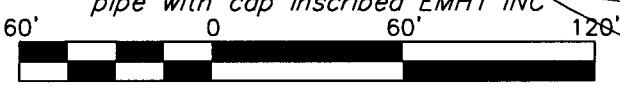
THE CITY OF COLUMBUS, OHIO
 2.5596 AC. (DEED)
 D.B. 1017, P. 29

Basis of Bearings:
 Bearings are based on the Ohio State Plane
 Coordinate System as per NAD83 (1986 adjusted).
 Control for bearings was from coordinates of
 monuments 5-83 & 4-83, having a bearing of
 North 00° 22' 10" West, for the west limited
 access right-of-way line of said Olentangy River
 Road, established by the Franklin County
 Engineering Department, using Global Positioning
 System procedures and equipment.

Note:
 - This survey was prepared by Evans, Mechwart,
 Hambleton & Tilton, Inc. from existing
 records and an actual field survey performed
 in August 2008.

SOUTH LINE OF
 QTR. TWP. 3
FIFTH AVENUE (60')

- = I.P. FND.
 - = I.P. SET
 - ▲ = R.R. SPK. FND.
- I.P. Set are 13/16" I.D. iron
 pipe with cap inscribed EMHT INC



GRAPHIC SCALE
 (IN FEET)

By _____
 Professional Surveyor No. 8250