

22012

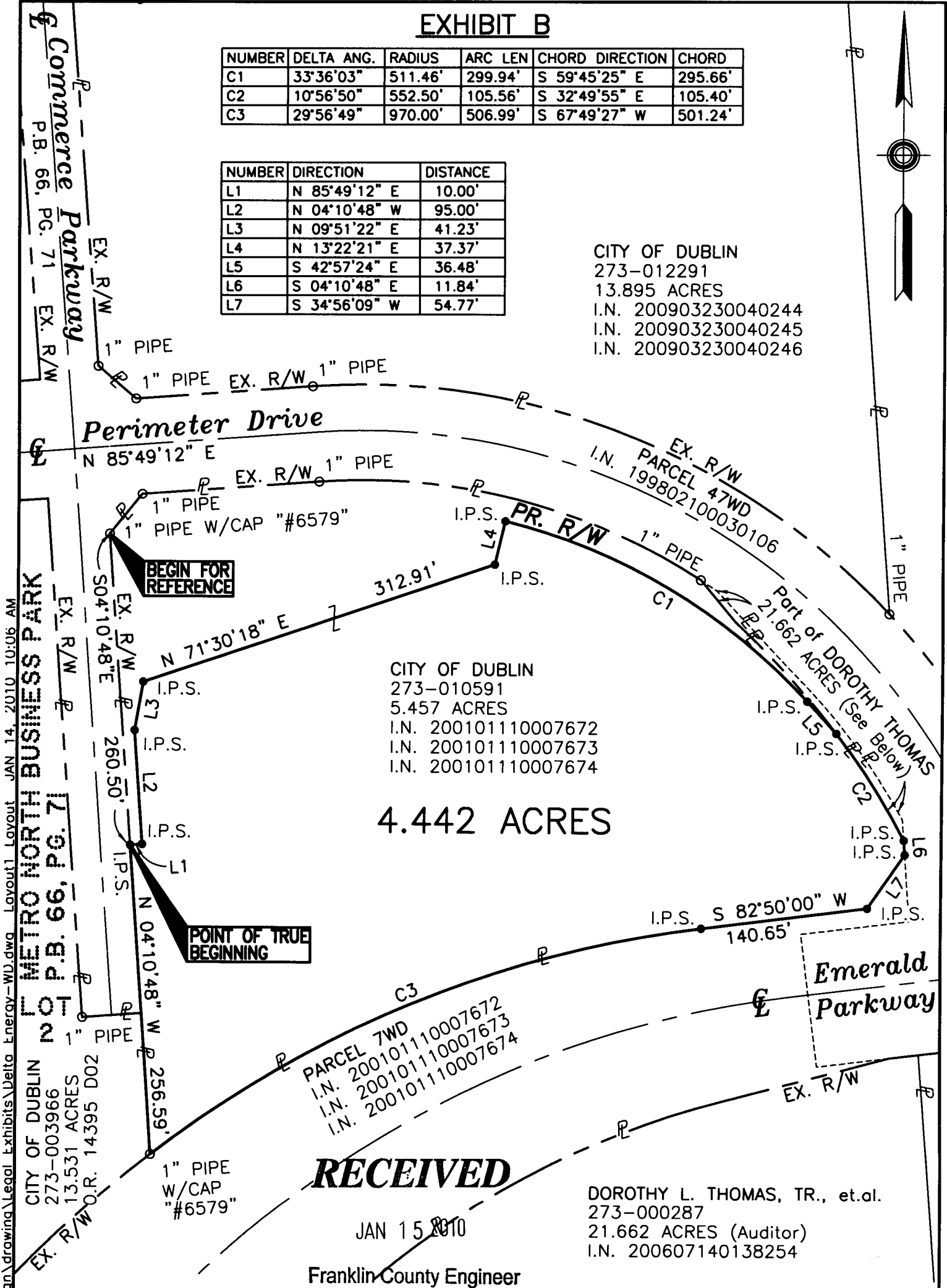
A-3-E

EXHIBIT B

NUMBER	DELTA ANG.	RADIUS	ARC LEN	CHORD DIRECTION	CHORD
C1	33°36'03"	511.46'	299.94'	S 59°45'25" E	295.66'
C2	10°56'50"	552.50'	105.56'	S 32°49'55" E	105.40'
C3	29°56'49"	970.00'	506.99'	S 67°49'27" W	501.24'

NUMBER	DIRECTION	DISTANCE
L1	N 85°49'12" E	10.00'
L2	N 04°10'48" W	95.00'
L3	N 09°51'22" E	41.23'
L4	N 13°22'21" E	37.37'
L5	S 42°57'24" E	36.48'
L6	S 04°10'48" E	11.84'
L7	S 34°56'09" W	54.77'

CITY OF DUBLIN
 273-012291
 13.895 ACRES
 I.N. 200903230040244
 I.N. 200903230040245
 I.N. 200903230040246



CITY OF DUBLIN
 273-010591
 5.457 ACRES
 I.N. 200101110007672
 I.N. 200101110007673
 I.N. 200101110007674

4.442 ACRES

RECEIVED

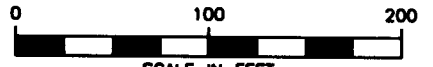
JAN 15 2010

Franklin County Engineer
 Dean C. Ringle, P.E., P.S.

DOROTHY L. THOMAS, TR., et.al.
 273-000287
 21.662 ACRES (Auditor)
 I.N. 200607140138254

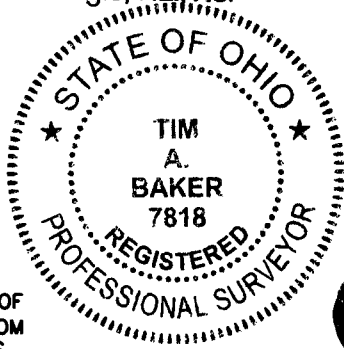
**4.442 ACRE PARCEL
 COMMERCE PKWY. & PERIMETER DR.**

FRANKLIN COUNTY, CITY OF DUBLIN, OHIO
 VIRGINIA MILITARY SURVEY 2542



SCALE IN FEET
 Prepared By

Stantec Consulting Services, Inc.
 1500 Lake Shore Drive, Suite 100
 Columbus, Ohio 43204
 Phone: (614) 486-4383



Stantec
Tim Baker 01-14-10
 Registered Surveyor #7818 Date

tbaker U:\1\5608615\transportation\design\drawing\Legal Exhibits\Delta Energy-WD.dwg Layout1 Layout1 JAN 14, 2010 10:06 AM

METRO NORTH BUSINESS PARK
 NO P.B. 66, PG. 71

CITY OF DUBLIN
 273-003966
 13.531 ACRES
 I.N. 200101110007672

MONUMENT LEGEND

- ⊠ R.R.S. FOUND
- ⊙ REBAR FOUND
- ⊙ IRON PIN FOUND
- ⊙ R/W MONUMENT FD
- 3/4" IRON PIPE SET WITH RED CAP "STANTEC"

BASIS OF BEARINGS

THE BEARINGS ARE BASED ON THE CENTERLINE OF COMMERCE PARKWAY AS BEING N04°10'48"W, FROM AN ACTUAL FIELD SURVEY USING G.P.S. METHODS FROM FRANKLIN COUNTY MONUMENTS #5417, #4463, AND #N8-94, FROM THE OHIO STATE PLANE COORDINATE SYSTEM, SOUTH ZONE, NORTH AMERICAN DATUM 1983 (1986 ADJUSTMENT).