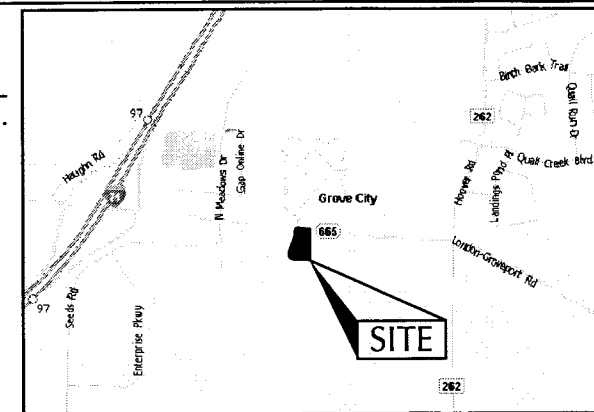


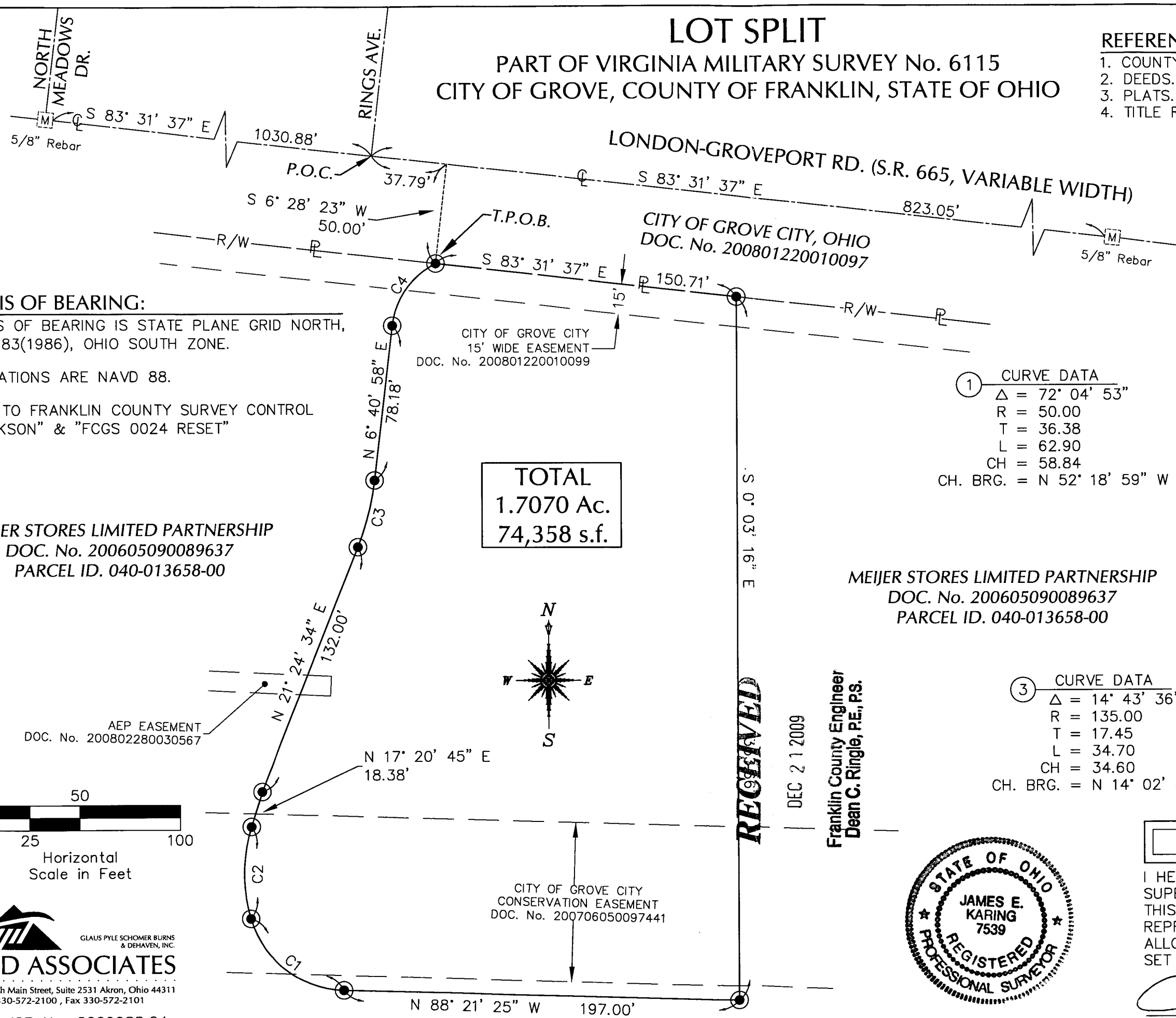
# LOT SPLIT

## PART OF VIRGINIA MILITARY SURVEY No. 6115 CITY OF GROVE, COUNTY OF FRANKLIN, STATE OF OHIO

- REFERENCES:**
1. COUNTY TAX MAP.
  2. DEEDS.
  3. PLATS.
  4. TITLE REPORT



VICINITY MAP



**BASIS OF BEARING:**

BASIS OF BEARING IS STATE PLANE GRID NORTH, NAD 83(1986), OHIO SOUTH ZONE.

ELEVATIONS ARE NAVD 88.

TIED TO FRANKLIN COUNTY SURVEY CONTROL "JACKSON" & "FCGS 0024 RESET"

**MEIJER STORES LIMITED PARTNERSHIP**  
DOC. No. 200605090089637  
PARCEL ID. 040-013658-00

**MEIJER STORES LIMITED PARTNERSHIP**  
DOC. No. 200605090089637  
PARCEL ID. 040-013658-00

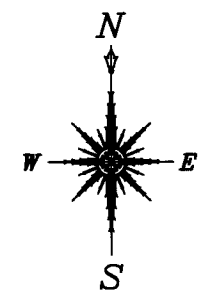
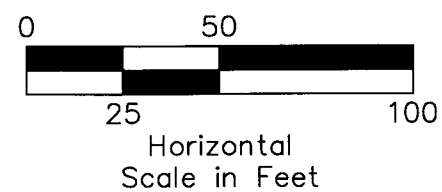
**TOTAL**  
**1.7070 Ac.**  
**74,358 s.f.**

① **CURVE DATA**  
 $\Delta = 72^\circ 04' 53''$   
 $R = 50.00$   
 $T = 36.38$   
 $L = 62.90$   
 $CH = 58.84$   
 CH. BRG. =  $N 52^\circ 18' 59'' W$

② **CURVE DATA**  
 $\Delta = 33^\circ 37' 17''$   
 $R = 80.00$   
 $T = 24.17$   
 $L = 46.94$   
 $CH = 46.27$   
 CH. BRG. =  $N 0^\circ 32' 06'' E$

③ **CURVE DATA**  
 $\Delta = 14^\circ 43' 36''$   
 $R = 135.00$   
 $T = 17.45$   
 $L = 34.70$   
 $CH = 34.60$   
 CH. BRG. =  $N 14^\circ 02' 46'' E$

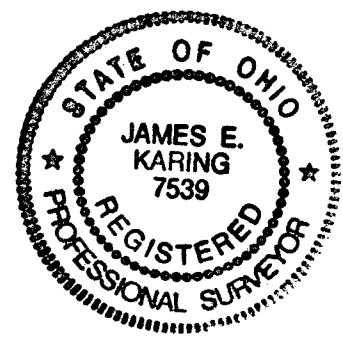
④ **CURVE DATA**  
 $\Delta = 56^\circ 41' 55''$   
 $R = 40.00$   
 $T = 21.58$   
 $L = 39.58$   
 $CH = 37.99$   
 CH. BRG. =  $N 35^\circ 01' 56'' E$



**RECEIVED**

DEC 21 2009

Franklin County Engineer  
Dean C. Ringle, P.E., P.S.



**SURVEYOR'S CERTIFICATION**

I HEREBY CERTIFY THAT I HAVE SURVEYED OR SUPERVISED THE SURVEY OF THE LANDS SHOWN ON THIS PLAT AND THE PLAT IS A CORRECT REPRESENTATION OF THE LAND SURVEYED AND THE ALLOTMENT THEREOF, AND THAT I HAVE FOUND OR SET THE PINS OR MONUMENTS SHOWN ON THIS PLAT.

*James E. Karing* 9/2/09  
 JAMES E. KARING, P.S. REG. No. 7539      DATE

**GPD ASSOCIATES**  
 GLAUS PYLE SCHOMER BURNS & DEHAVEN, INC.  
 520 South Main Street, Suite 2531 Akron, Ohio 44311  
 330-572-2100, Fax 330-572-2101  
 GPD JOB No. 2009088.04