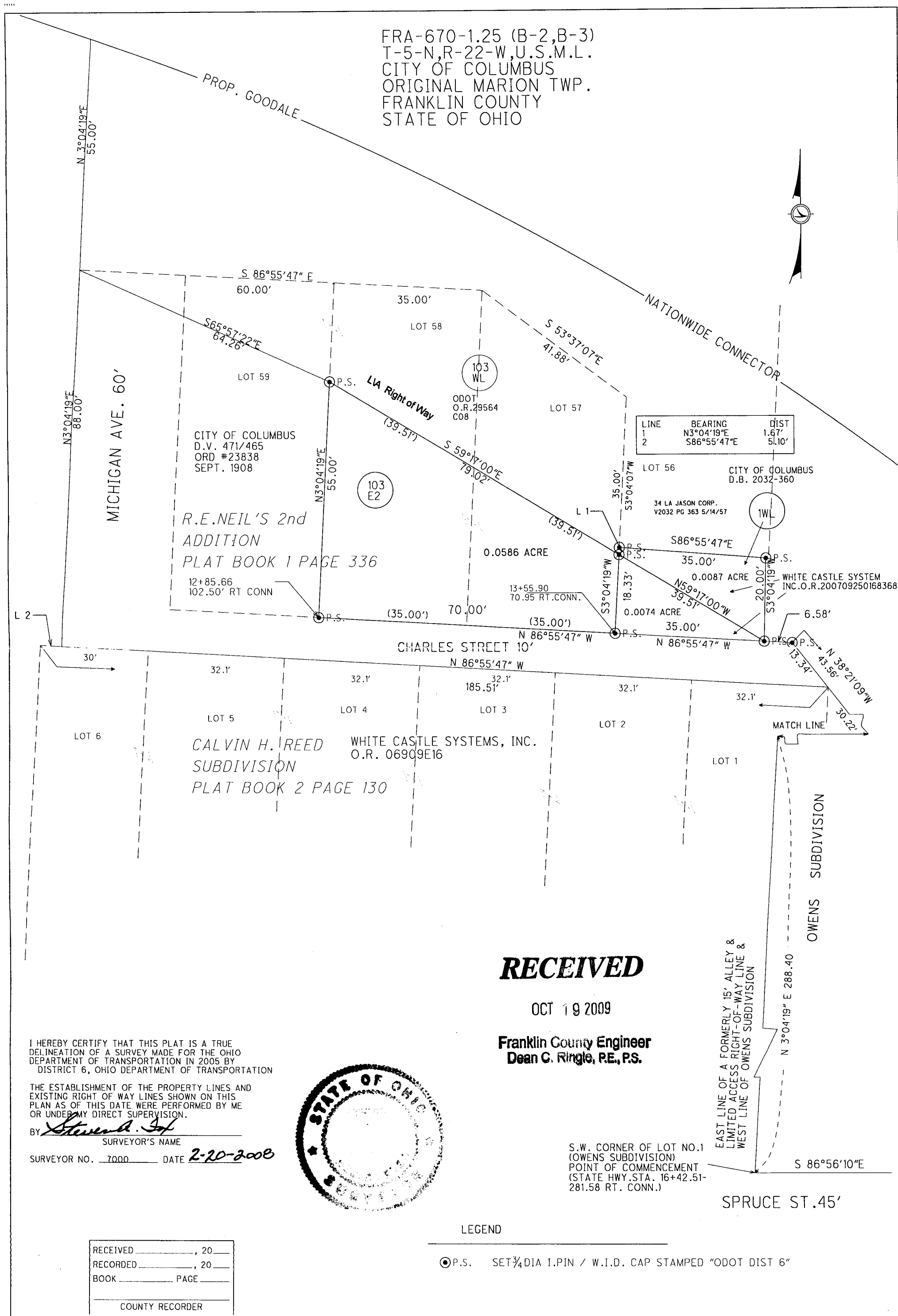


FRA-670-1.25 (B-2,B-3)
T-5-N,R-22-W,U.S.M.L.
CITY OF COLUMBUS
ORIGINAL MARION TWP.
FRANKLIN COUNTY
STATE OF OHIO

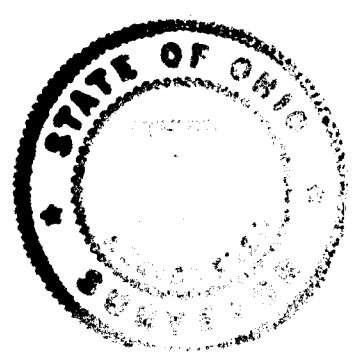


LINE	BEARING	DIST
1	N3°04'19"E	1.67'
2	S86°55'47"E	51.10'

RECEIVED

OCT 19 2009

Franklin County Engineer
Dean C. Ringle, P.E., P.S.



I HEREBY CERTIFY THAT THIS PLAT IS A TRUE DELINEATION OF A SURVEY MADE FOR THE OHIO DEPARTMENT OF TRANSPORTATION IN 2005 BY DISTRICT 6, OHIO DEPARTMENT OF TRANSPORTATION

THE ESTABLISHMENT OF THE PROPERTY LINES AND EXISTING RIGHT OF WAY LINES SHOWN ON THIS PLAN AS OF THIS DATE WERE PERFORMED BY ME OR UNDER MY DIRECT SUPERVISION.

BY Stevan J. Jof
SURVEYOR'S NAME
SURVEYOR NO. 7000 DATE 2-20-2008

S.W. CORNER OF LOT NO.1 (OWENS SUBDIVISION) POINT OF COMMENCEMENT (STATE HWY. STA. 16+42.51-281.58 RT. CONN.)

EAST LINE OF A FORMERLY 15' ALLEY & LIMITED ACCESS RIGHT-OF-WAY LINE & WEST LINE OF OWENS SUBDIVISION

LEGEND

⊙ P.S. SET 3/4" DIA I.PIN / W.I.D. CAP STAMPED "ODOT DIST 6"

RECEIVED	_____	20
RECORDED	_____	20
BOOK	_____	PAGE _____
COUNTY RECORDER		

FRA 670-1.25/
B-2,B-3

PLAT OF SURVEY

CALCULATED SAF _____
CHECKED SAF _____
SCALE IN FEET