

I.S.E

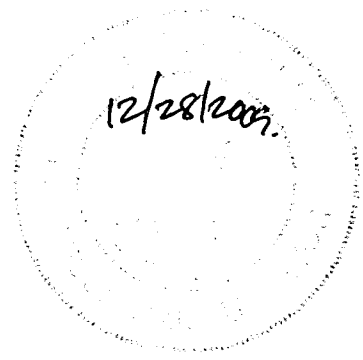
RECEIVED

DEC 3 12 2010 2009 MAS

Franklin County Engineer  
Dean C. Ringle, P.E., P.S.

NOTE

1.529 ACRES OUT OF 33.918 ACRES.



BASIS OF BEARINGS

BEARINGS ARE BASED ON THE CENTERLINE OF WARNER ROAD BEING NORTH 86°17'30" WEST AS SHOWN ON THE DEDICATION PLAT OF HAMILTON ROAD AND EASEMENTS OF RECORD IN PLAT BOOK 100, PAGE 3.

NOTE

ALL IRON PINS SET ARE 5/8" SOLID IRON PINS 30" IN LENGTH WITH AN ORANGE PLASTIC CAP STAMPED "FLOYD BROWNE GROUP".

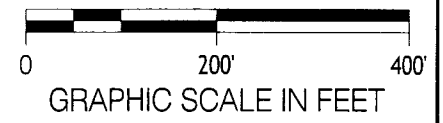
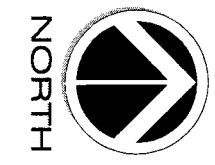
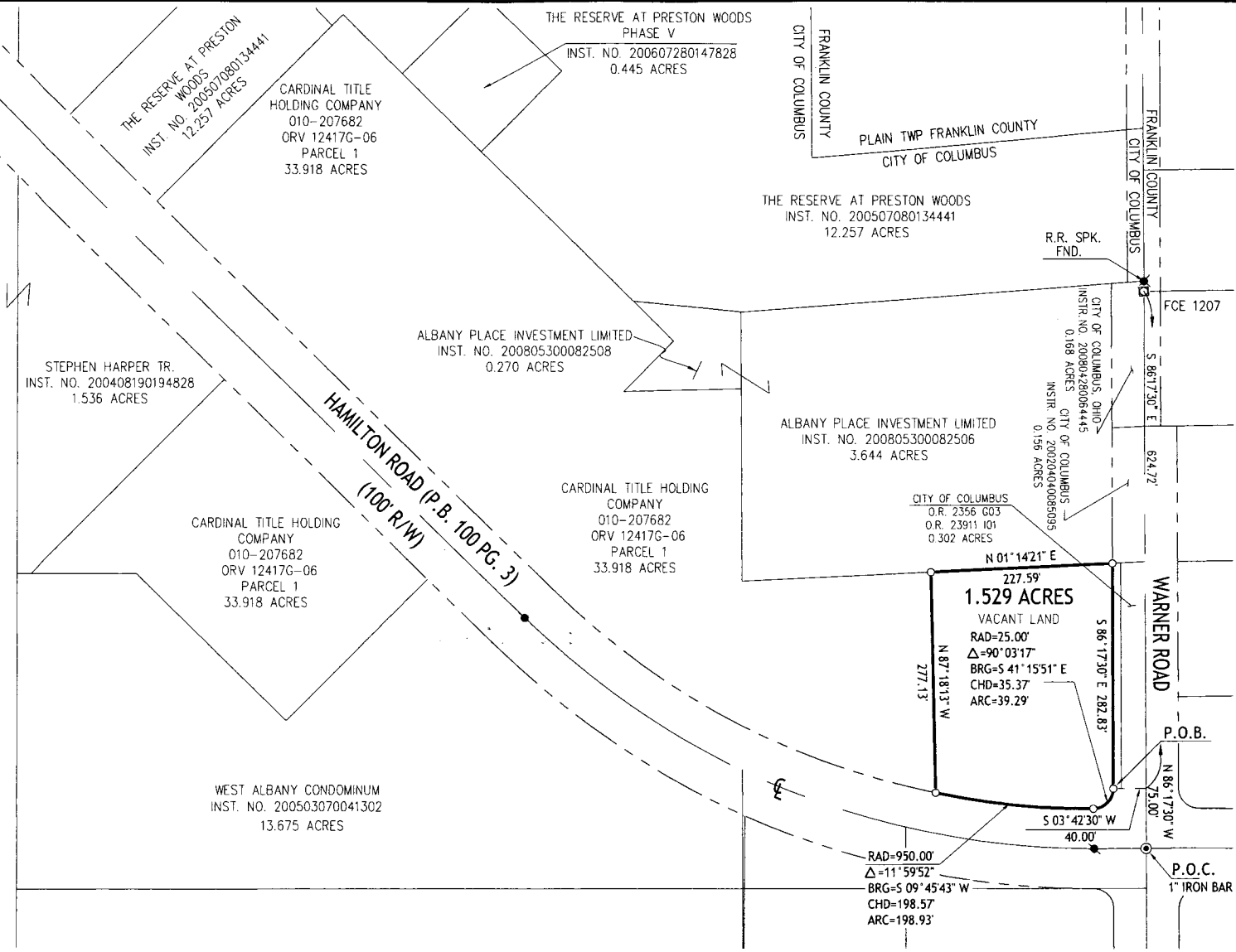
NOTE

ALL RECORD INFORMATION SHOWN HEREON WAS OBTAINED FROM THE RECORDER'S OFFICE, FRANKLIN COUNTY, OHIO.

I HEREBY STATE THAT THIS SURVEY IS BASED ON ACTUAL FIELD MEASUREMENTS AND TO THE BEST OF MY KNOWLEDGE AND BELIEF IS CORRECT.

*Mark Alan Smith*

MARK ALAN SMITH, P.S.  
PROFESSIONAL SURVEYOR NO. 8232



PLAT OF SURVEY FOR  
1.529 ACRES

SITUATED IN THE STATE OF OHIO,  
COUNTY OF FRANKLIN, CITY OF  
COLUMBUS,  
BEING PART OF QUARTER TOWNSHIP 3,  
TOWNSHIP 2, RANGE 16,  
UNITED STATES MILITARY LANDS.

LEGEND

- IRON PIN FND ●
- IRON PIPE FND ⊙
- MAG NAIL FND ⊛
- IRON PIN SET ○
- MAG NAIL SET ⊙
- MONUMENT BOX ⊠
- SPIKE FOUND ⊛

PAGE 1 OF 1  
DRAWN BY: MAS  
CHECKED BY: DBP

FILE NO. 06-50639-030

**Floyd Browne Group**

Central Ohio  
740.363.6792  
740.363.6536 fax  
800.325.7647

Solutions for Your World  
www.FloydBrowne.com