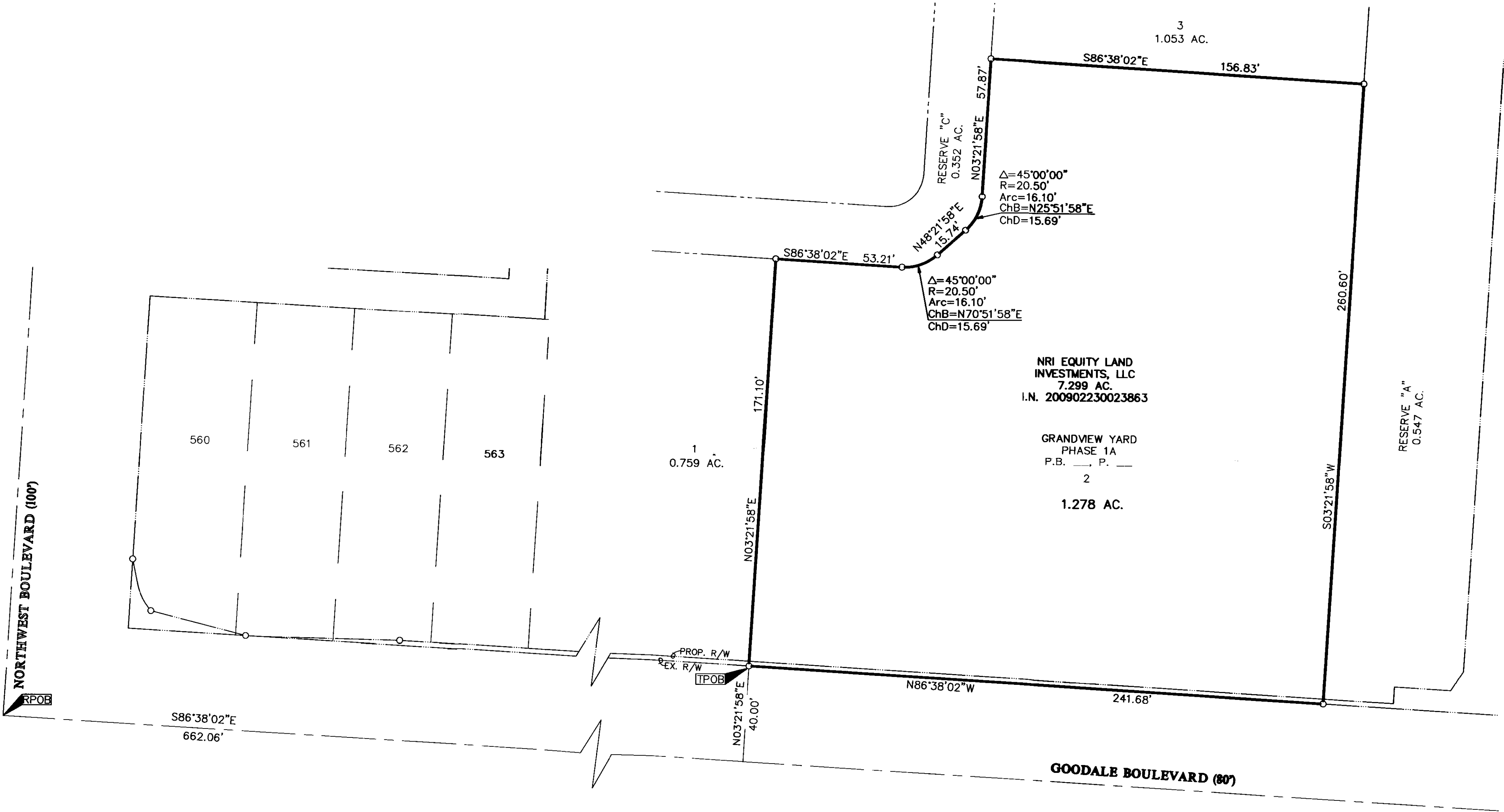


# SURVEY OF ACREAGE PARCEL SECTION 7, TOWNSHIP 5, RANGE 22 REFUGEE LANDS CITY OF GRANDVIEW HEIGHTS, COUNTY OF FRANKLIN, STATE OF OHIO

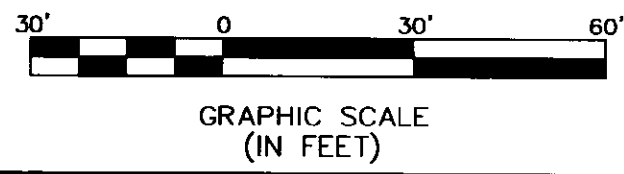


**NRI EQUITY LAND INVESTMENTS, LLC**  
7.299 AC.  
I.N. 200902230023863

**GRANDVIEW YARD PHASE 1A**  
P.B. — P. —  
2  
1.278 AC.

\\C:\MFDATA01\PROJECT01\20091438\20091438\DWG\91438B\3.DWG<18X24 LANDSCAPE> - NO XREFS - LAST SAVED BY TBAXTER [11/5/2009 8:29:16 AM] - PLOTTED BY TBAXTER [11/5/2009 8:31:51 AM]

- = STONE FND.
  - = MON. FND.
  - = I.P. FND.
  - = I.P. SET
  - = MAG. NAIL FND.
  - = MAG. NAIL SET
  - ▲ = R.R. SPK. FND.
  - △ = R.R. SPK. SET
  - = P.K. NAIL FND.
- I.P. Set are 13/16" I.D. iron pipe with cap inscribed EMHT INC



**BASIS OF BEARINGS:**  
The Bearings shown hereon are based on the Ohio State Plane Coordinate System as per South Zone NAD83 (1986 Adjustment). Control for bearings was from coordinates of monuments 5-83 and 4-83, having a bearing of North 00° 22' 10" West, for the west limited access right-of-way of Olentangy River Road, established by the Franklin County Engineering Department, using Global Positioning System procedures and equipment.

**RECEIVED**  
2009  
Franklin County Engineer  
Duan C. Ringle, PE., P.S.



By: *[Signature]*  
Professional Surveyor No. 8250

<b>EMHT</b>		Date: December 2, 2009
Evans, Mechwart, Hambleton & Tilton, Inc. Engineers • Surveyors • Planners • Scientists 5500 New Albany Road, Columbus, OH 43054 Phone: 614.775.4500 Fax: 614.775.4800		Scale: 1" = 30'
M C M X X V I		Job No: 2009-1438
		Sheet: 1 of 1
REVISIONS		
MARK	DATE	DESCRIPTION