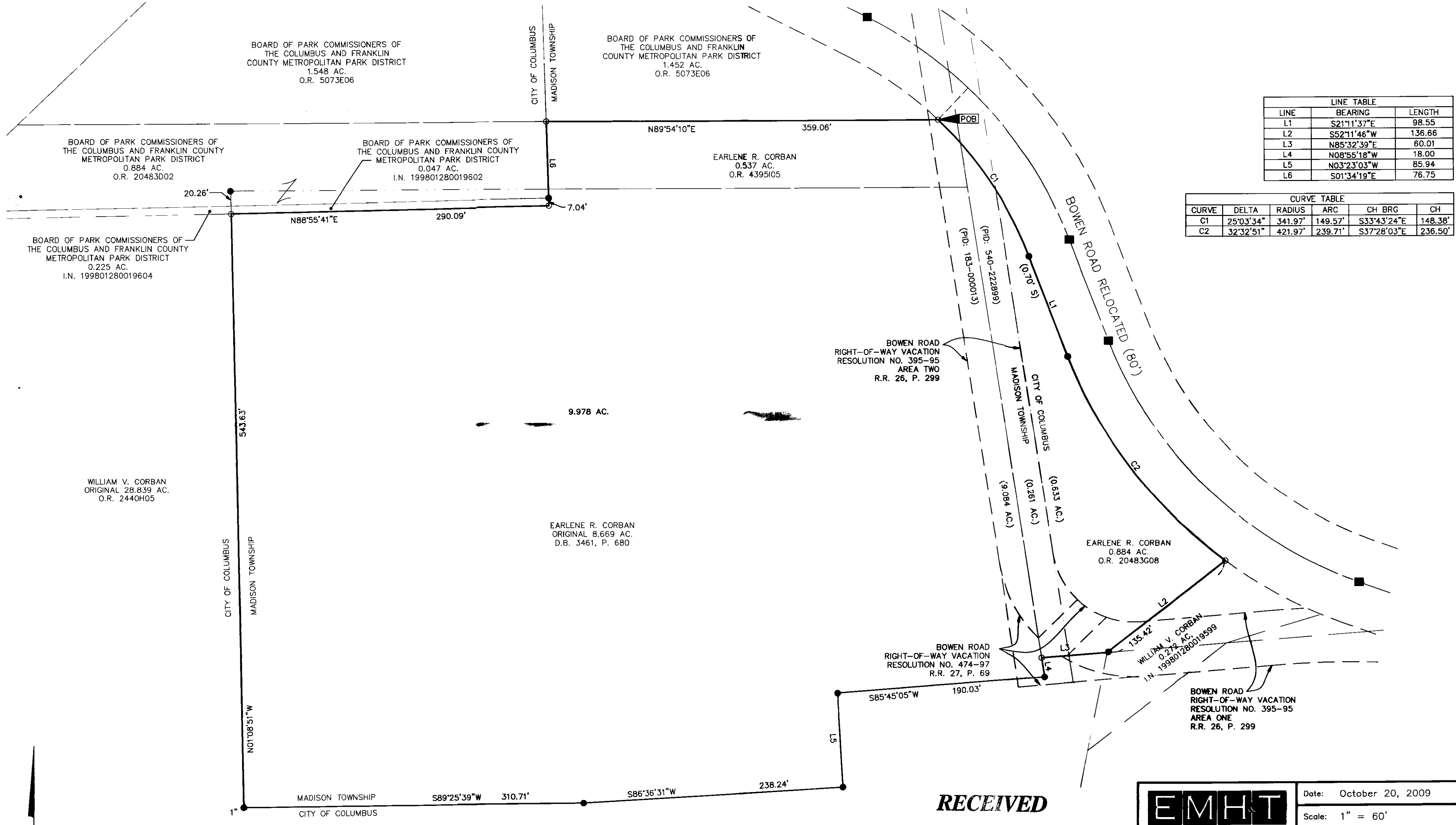


# SURVEY OF ACREAGE PARCEL

## SECTION 18, TOWNSHIP 15, RANGE 20

### CONGRESS LANDS

#### CITY OF COLUMBUS AND TOWNSHIP OF MADISON, COUNTY OF FRANKLIN, STATE OF OHIO

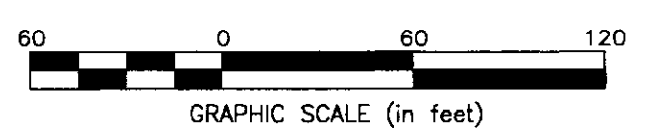


LINE TABLE		
LINE	BEARING	LENGTH
L1	S21°11'37"E	98.55
L2	S52°11'46"W	136.66
L3	N85°32'39"E	60.01
L4	N08°55'18"W	18.00
L5	N03°23'03"W	85.94
L6	S01°34'19"E	76.75

CURVE TABLE					
CURVE	DELTA	RADIUS	ARC	CH BRG	CH
C1	25°03'34"	341.97'	149.57'	S33°43'24"E	148.38'
C2	32°32'51"	421.97'	239.71'	S37°28'03"E	236.50'

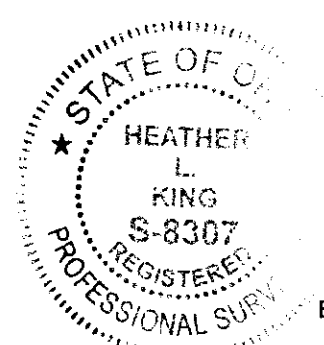
J:\2009\357\200913575VA.DWG\91357BV1.DWG plotted by KING, HEATHER on 11/25/2009 10:47:39 AM  
 Xrefs: GIS.DWG

○ = I.P. SET  
 ● = 3/4" I.P. FND.  
 UNLESS NOTED OTHERWISE  
 I.P. Set are 13/16" I.D. iron  
 pipe with cap inscribed EMHT INC



**SURVEY NOTE:**  
 This survey was prepared using documents of record,  
 prior plats of survey, and observed evidence located by  
 an actual field survey.

**BASIS OF BEARINGS:**  
 The Bearings shown hereon are based on bearings of  
 record in Official Record 2440H05, Recorder's Office,  
 Franklin County, Ohio.



**RECEIVED**

DEC 22 2009

Franklin County Engineer  
Dean C. Ringo, P.E., P.S.

By *Heather L. King*  
Professional Surveyor No. 8307

Date 12/1/09

 Evans, Mechwart, Hambleton & Tilton, Inc. Engineers • Surveyors • Planners • Scientists 5500 New Albany Road, Columbus, OH 43054 Phone: 614.775.4500 Toll Free: 888.775.3648 emht.com	Date: October 20, 2009	
	Scale: 1" = 60'	
	Job No: 2009-1357	
	Sheet: 1 of 1	
REVISIONS		
MARK	DATE	DESCRIPTION
HLK	11/23/09	Revised boundary - additional roadway monuments located